

## APTT Mixing Study

---

**Introduction** This process describes the stages that comprise the APTT mixing study workflow.

---

**Scope** The intended users of this document include Clinical Laboratory Scientists (CLS) and Laboratory Technical Supervisors handling APTT mixing study samples, issues, or concerns.

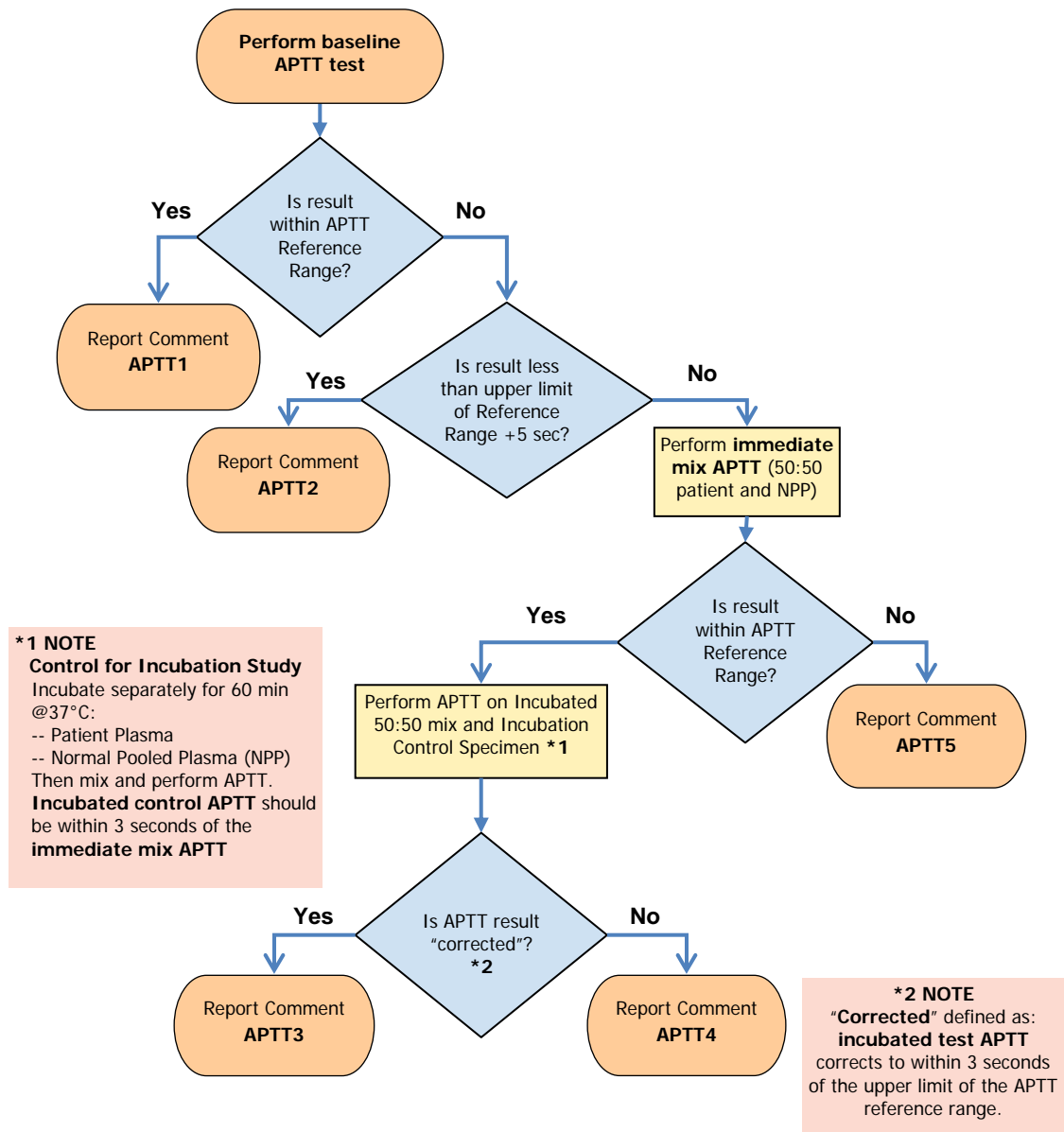
---

**Process** Refer to the diagram on Page 2 of this document to view the APTT mixing study workflow.

---

*Continued on next page*

## APTT Mixing Study, Continued



### Report Comment Interpretations

- **APTT1:** Patient baseline APTT is normal. Mixing Study not performed.
- **APTT2:** Patient baseline APTT is minimally prolonged (<5 seconds). Mixing study not performed due to limited clinical utility in these cases.
- **APTT3:** APTT corrects with immediate mixing and remains corrected with incubation. Results of these studies are suggestive of factor deficiency.
- **APTT4:** APTT corrects with immediate mixing, but does not remain corrected with incubation. Results of these studies indicate a time- or temperature-dependent factor inhibitor such as factor VIII inhibitor or some lupus anti-coagulants. Further studies such as Factor VIII inhibitor or lupus anticoagulant testing may help identify the specific inhibitor.
- **APTT5:** APTT does not correct with mixing. Results are suggestive of an inhibitor. The presence of anticoagulant inhibitor drugs such as heparin or direct thrombin inhibitors cannot be excluded.

*Continued on next page*

## APTT Mixing Study, Continued

---

**Non-Controlled Documents** The following non-controlled document supports this policy.

Clinical and Laboratory Standards Institute (CLSI). *Collection, Transport, and Processing of Blood Specimens for Testing Plasma-Based Coagulation Assays and Molecular Hemostasis Assays; Approved Guideline-Fifth Edition*. CLSI document H21-A5 (ISBN 1-56238-657-3). Clinical and Laboratory Standards Institute, 940 West Valley Road, Suite 1400, Wayne, Pennsylvania 19087-1898 USA, 2008.

---

**Controlled Documents** The following controlled document supports this procedure.

Procedure
APTT Mixing Study

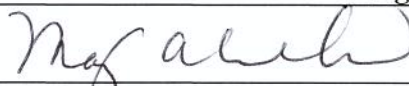


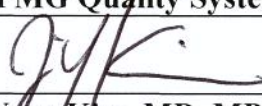
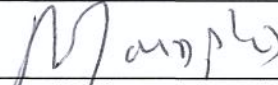
---

**Author(s)** Ji Yeon Kim, MD, MPH  
Bill Brice, MT(ASCP), MBA  
Eleanor E. Callasan, MPH, CLS(ASCP)

---

## APTT Mixing Study, Continued

Reviewed and approved by:

Signature	Date
	11/20/2012
<b>Mary Anne Umekubo, MS, CLS</b> Assistant Director of Laboratory Services, Esoteric Chemistry & Special Coagulation	
	11/20/12
<b>Vincent Dizon, MBA, CLS</b> Director of Laboratory Services, Chemistry Section	
	11-20-12
<b>Maureen Ahler, MSQA, MT(ASCP)</b> SCPMG Quality Systems Leader	
	11/20/12
<b>Ji Yeon Kim, MD, MPH</b> Assistant Medical Director, Regional Reference Laboratories	
	11/20/12
<b>Darryl Palmer-Toy, MD, PhD</b> SCPMG Assistant Medical Director, Laboratory Services Director, Regional Reference Laboratories	

Reviewed and approved by (for Medical Center Area Approval Only):

SIGNATURE	DATE
<b>Name:</b> _____ Operations Director, Area Laboratory	
<b>Name:</b> _____ CLIA Laboratory Director	

Continued on next page

### APTT Mixing Study, Continued

## HISTORY PAGE

Type of Change: New Major, Minor	Description of Change(s)	Quality Systems Leader/Date	Operations Director, Area Laboratory Review/Date	Laboratory Director Review/Date	Date Change Implemented
New		M. Adler 11-20-12			