

APTT Mixing Study

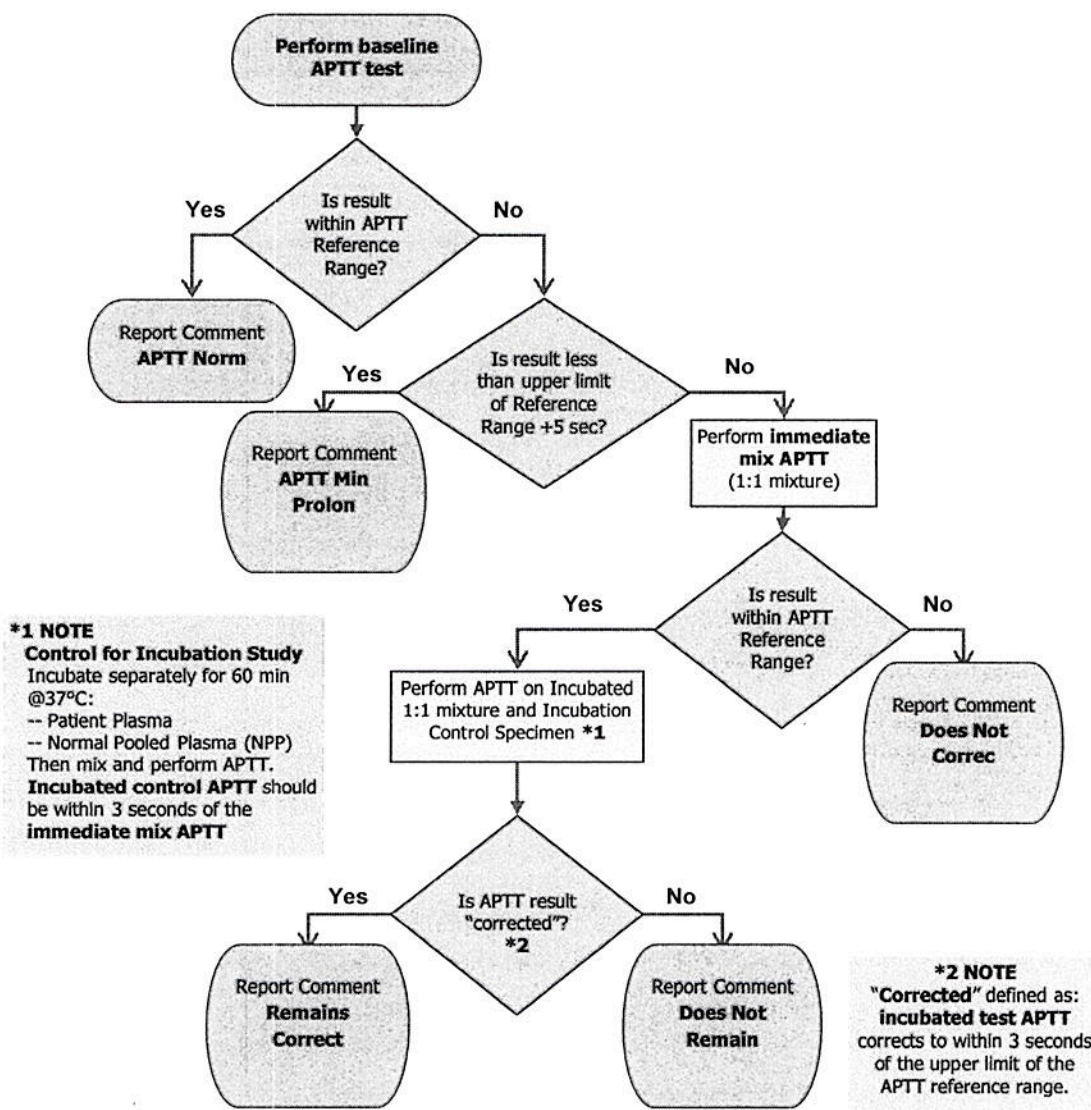
Introduction This process describes the stages that comprise the APTT mixing study workflow.

Scope The intended users of this document include Clinical Laboratory Scientists (CLS) and Laboratory Technical Supervisors handling APTT mixing study samples, issues, or concerns.

Process Refer to the diagram on Page 2 of this document to view the APTT mixing study workflow.

Continued on next page

APTT Mixing Study, Continued



Report Comment Interpretations

- **APTT Norm:** Patient baseline APTT is normal. Mixing Study not performed.
- **APTT Min Prolon:** Patient baseline APTT is minimally prolonged (<5 seconds). Mixing study not performed due to limited clinical utility in these cases.
- **APTT Remains Correct:** APTT corrects with immediate mixing and remains corrected with incubation. Results of these studies are suggestive of factor deficiency.
- **Does Not Remain:** APTT corrects with immediate mixing, but does not remain corrected with incubation. Results of these studies indicate a time- or temperature-dependent factor inhibitor such as factor VIII inhibitor or some lupus anti-coagulants. Further studies such as Factor VIII inhibitor or lupus anticoagulant testing may help identify the specific inhibitor.
- **Does Not Correc:** APTT does not correct with mixing. Results are suggestive of an inhibitor. The presence of anticoagulant inhibitor drugs such as heparin or direct thrombin inhibitors cannot be excluded.

Continued on next page

APTT Mixing Study, Continued

Non-Controlled Documents The following non-controlled document supports this policy.

Clinical and Laboratory Standards Institute (CLSI). *Collection, Transport, and Processing of Blood Specimens for Testing Plasma-Based Coagulation Assays and Molecular Hemostasis Assays; Approved Guideline-Fifth Edition*. CLSI document H21-A5 (ISBN 1-56238-657-3). Clinical and Laboratory Standards Institute, 940 West Valley Road, Suite 1400, Wayne, Pennsylvania 19087-1898 USA, 2008.

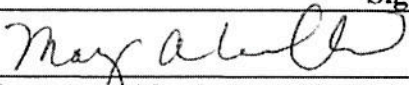
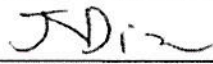
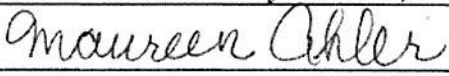
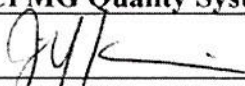
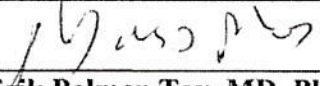
Controlled Documents The following controlled document supports this procedure.

Procedure
APTT Mixing Study

Author(s) Ji Yeon Kim, MD, MPH
Bill Brice, MT(ASCP), MBA
Eleanor E. Callasan, MPH, CLS(ASCP)

APTT Mixing Study, Continued

Reviewed and approved by:

Signature	Date
	11/24/2013
Mary Anne Umekubo, MS, CLS Assistant Director of Laboratory Services, Esoteric Chemistry & Special Coagulation	
	11/21/2013
Vincent Dizon, MBA, CLS Director of Laboratory Services, Chemistry Section	
	11/21/2013
Maureen Ahler, MSQA, MT(ASCP) SCPMG Quality Systems Leader	
	11/21/13
Ji Yeon Kim, MD, MPH Physician-in-Charge, Clinical Chemistry & Laboratory Informatics	
	11/22/13
Darryl Erik Palmer-Toy, MD, PhD Assistant Medical Director of Laboratory Services, SCPMG Medical Director, SCPMG Regional Reference Laboratories Chair – Laboratory Quality Operations	

Reviewed and approved by (for Medical Center Area Approval Only):

SIGNATURE	DATE
Name: _____ Operations Director, Area Laboratory	
Name: _____ CLIA Laboratory Director	

Continued on next page