

## PROCESSING RANDOM URINE SPECIMENS AT 4867 LABORATORY

---

**Purpose** To establish a guideline in processing random urine specimens in a timely manner.

---

**Workplace Safety**

- For equipment safety, proper body mechanics, sharp exposure, other safety practices, see LAMC-PPP-0123 - Safety Practices.
- For proper use of gloves, see LAMC-PPP-0127 - Infection Control.
- For exposure to body fluids, see LAMC-PPP-0128- Universal Body Substance Precautions.
- For proper handwashing, see LAMC-PPP-0132 - Handwashing Policy

---

**Definition**

**Core Specimen Processing Area** – processing bench in the main processing area of the laboratory. All random urine specimens delivered by courier, other staff and routine pneumatic tube stations

**STAT Area** - stat testing area. All random urine specimens delivered by courier, other staff and STAT pneumatic tube station.

**Statement CORE** The laboratory assistant/s assigned in the Specimen Processing Area of the CORE Specimen Processing area is responsible for checking and processing all active orders in KPHC, KRMS and Cerner.

**Responsibilities**

- Pull all active orders in KRMS, KPHC and Cerner
- Aliquot urine specimen based on tests ordered
- Distribute aliquots to the appropriate testing area of the lab
- Scan the specimens for Regional Laboratories into transfer list and pack the for shipment
- Hand off specimens for outside laboratories to staff assigned to send out bench
- Consult Manager or Supervisor for any problems encountered

**Statement STAT** The laboratory assistant and CLS/MLT assigned in the STAT area of the laboratory are responsible for processing all STAT in-patient and dropped off random urine specimens.

---

*Continued on next page*

## PROCESSING RANDOM URINE SPECIMENS AT 4867 LABORATORY, *Continued*

---

**Statement  
STAT** The laboratory assistant and CLS/MLT assigned in the STA area of the laboratory are responsible for processing all STAT in-patient and dropped off random urine specimens.

- Responsibilities**
- Pull all active orders in KRMS, KPHC and Cerner
  - CLS/MLT will aliquot the specimen for other in-house testing and/or send out testing after completion of testing in the STAT area
  - CLS will distribute aliquots to the appropriate in-house testing section
  - CLS will hand off aliquots for testing in Regional or outside laboratories to staff in the CORE specimen processing area

**Process**

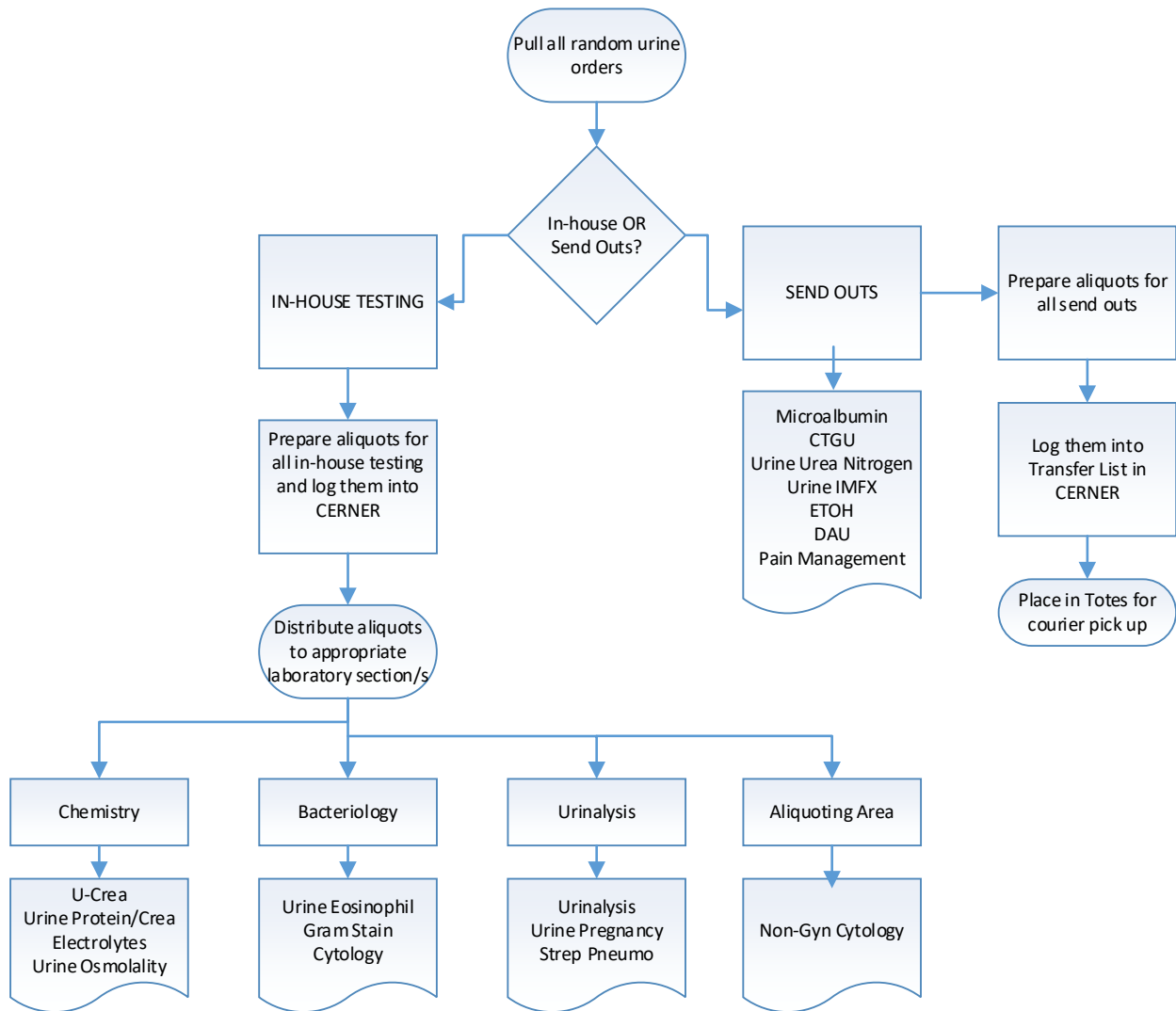
The flowcharts below illustrate the processing of random urine specimens in the specimen processing areas in the CORE and STAT sections of the laboratory.

---

*Continued on next page*

# PROCESSING RANDOM URINE SPECIMENS AT 4867 LABORATORY, *Continued*

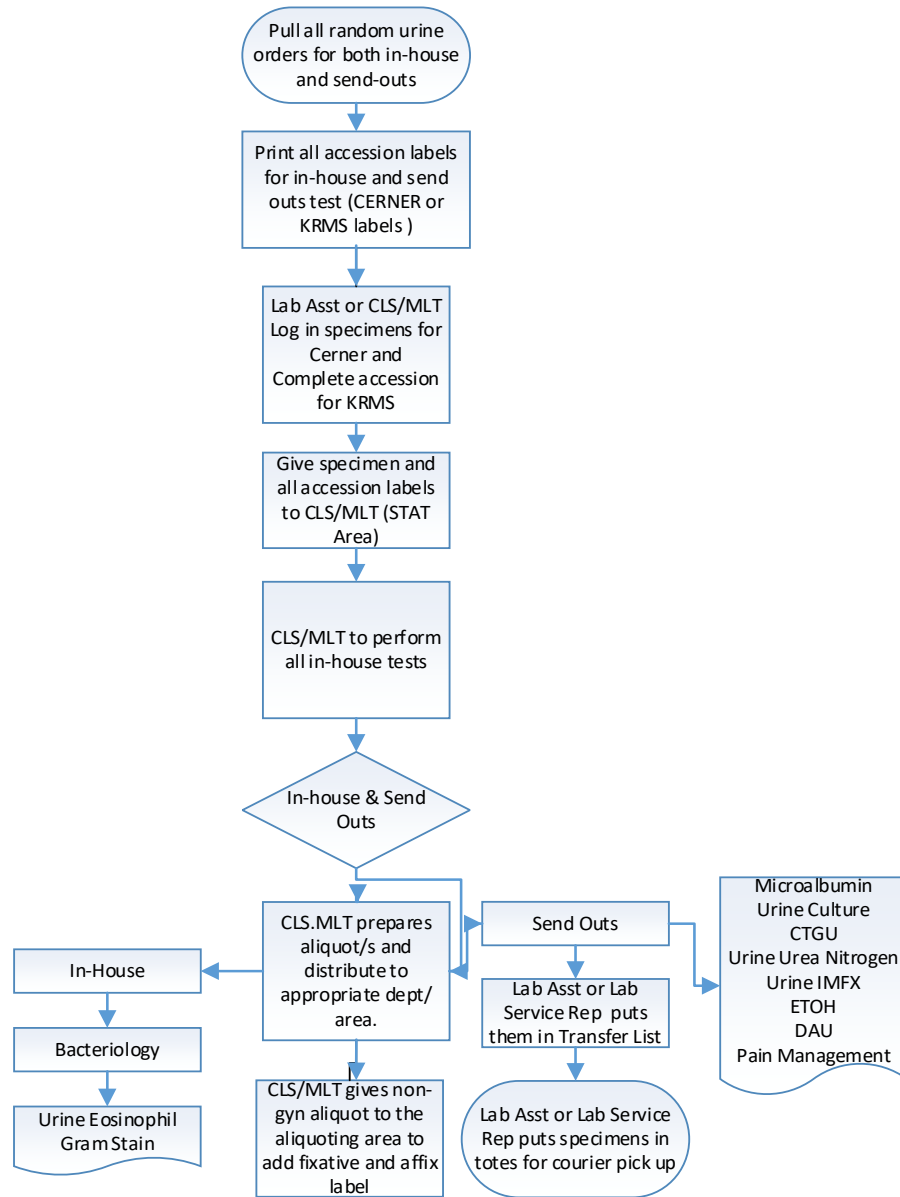
## SPECIMEN PROCESSING AREA CORE LABORATORY



*Continued on next page*

# PROCESSING RANDOM URINE SPECIMENS AT 4867 LABORATORY, *Continued*

## SPECIMEN PROCESSING AREA STAT SECTION



*Continued on next page*

## PROCESSING RANDOM URINE SPECIMENS, *Continued*

Reference Chart for Random Urine Tests:

Test Name	Reference Guide Look-Up	Collection Container	Aliquot Container	Transport Temperature
5-HIAA, Serotonin	Quest Diag	UR 25	UR 25	Ambient w/preservative Frozen w/o preservative
Arylsulfatase A,	Quest Diag	UR 25	UR 25	Refrigerate
Barbiturates, Confirmation Urine	Quest Diag	UR 25	UR 25	Ambient
Benzodiazepines, Confirmation Urine LC/MS/MS	Quest Diag			Refrigerate
Beta 2 Microglobulin, Urine	Quest Diag	UR 25	UR 10	Frozen
BK Virus DNA, Qualitative Real-Time PCR	Quest Diag	UR 25	UR 25	Frozen
Delta Aminolevulinic Acid	Quest Diag	UR 25	PU 30	Refrigerate
Hemosiderin	Quest Diag	UR 25	UR 25	Refrigerate
Histoplasma Antigen	Quest Diag	UR 25	UR 25	Refrigerate
Homovanillic Acid	Quest Diag	UR 25	UR 25	Ambient w/ph < 3 Frozen w/o preservative
JC Polyoma Virus DNA, Qualitative Real-Time PCR	Quest Diag	UR 25	UR 25	Frozen
Lipase	Quest Diag	UR 25	UR 25	Refrigerate
LSD, Qualitative, EIA	Quest Diag	UR 25	PU 30	Refrigerate
Mercury	Quest Diag	UR 25	UR 25	Refrigerate
Metanephrines	Quest Diag	UR 25	UR 25	Ambient w/ph < 3 Frozen w/o preservative
Myoglobin	Quest Diag	UR 25	Special Tube	Frozen
Oxalate/Creatinine	Quest Diag	UR 25	UR 25	Refrigerate
Porphobilinogen Quantitative	Quest Diag	UR 25	PU 30	Frozen
Porphyrins, Fractionated Quantitative	Quest Diag	UR 25	UR 25	Refrigerate
Silicon	Quest Diag	UR 25	UR 25	Refrigerate

*Continued on next page*

## PROCESSING RANDOM URINE SPECIMENS, *Continued*

Reference Chart for Random Urine Tests:

Test Name	Reference Guide Look-Up	Collection Container	Aliquot Container	Transport Temperature
VMA (Vanillylmandelic Acid and Creatinine)	Quest Diag	UR 25	UR 25	Ambient w/ph < 3 Frozen w/o preservative
Sports 1 Expanded	Quest Diag	UR 25	UR 25	Refrigerate
Amylase	LabNet	UR 25	GWH3	Refrigerate
Calcium	LabNet	UR 25	GWH3	Refrigerate
Calcium/Creatinine Ratio	LabNet	UR 25	GWH3	Refrigerate
Citrate/Creatinine Ratio	LabNet	UR 25	UR25	Frozen
Creatinine	LabNet	UR 25	GWH3	Refrigerate
Magnesium/Creatinine Ratio	LabNet	UR 25	GWH3	Refrigerate
MicroAlbumin Quantitative	LabNet	UR 25	GWH3	Refrigerate
Phosphorus	LabNet	UR 25	GWH3	Refrigerate
Phosphorus/Creatinine	LabNet	UR 25	GWH3	Refrigerate
Potassium	LabNet	UR 25	GWH3	Refrigerate
Protein/Creatinine	LabNet	UR 25	GWH3	Refrigerate
Total Protein	LabNet	UR 25	GWH3	Refrigerate
Amphetamine, Methamphetamine, Confirmation	LabNet	UR 25	UR 25	Refrigerate
Barbiturates	LabNet	UR 25	UR 25	Refrigerate
Cannabinoids, Confirmatory	LabNet	UR 25	UR 25	Refrigerate
Cocaine Metabolite, Confirmatory	LabNet	UR 25	UR 25	Refrigerate
Drug of Abuse Screen	LabNet	UR 25	UR 25	Refrigerate
Electrolytes	LabNet	UR 25	GWH3	Refrigerate
Ethanol	LabNet	UR 25	UR 25	Refrigerate
Methadone Screen	LabNet	UR 25	UR 25	Refrigerate
Opiate Screen, Pain Management	LabNet	UR 25	UR 25	Refrigerate
Opiate, Confirmatory	LabNet	UR 25	UR 25	Refrigerate
PCP Confirmatory	LabNet	UR 25	UR 25	Refrigerate
Propoxyphane Screen	LabNet	UR 25	UR 25	Refrigerate
Nicotine Metabolite	LabNet	UR25 or 24 hr	UR 25	Refrigerate
Immunofixation	LabNet	UR25 or 24 hr	UR 25	Refrigerate

*Continued on next page*

## PROCESSING RANDOM URINE SPECIMENS, *Continued*

Reference Chart for Random Urine Tests:

Test Name	Reference Guide Look-Up	Collection Container	Aliquot Container	Transport Temperature
Sodium	LabNet	UR25 or 24 hr	GWH3	Refrigerate
Amino Acid Quantitative	LabNet	UR 25	UR 25	Frozen
Carnitine Free and Total	LabNet	UR 25	UR 25	Frozen
Cystine Quantitative	LabNet	UR 25	UR 25	Frozen
Lysosomal Storage Disease Screen	LabNet	UR 25 and GRN (Lithium Heparin)	UR 25 x2 and Plasma	Frozen
Mucopolysaccharide Screen	LabNet	UR 25	UR 25 x2	Frozen
Oligosaccharides Qualitative	LabNet	UR 25	UR 25	Frozen
Organic Acid	LabNet	UR 25	UR 25	Frozen
Orotic Acid	LabNet	UR 25	UR 10	Frozen
Chlamydia/GC, Amplified Probe Technique	LabNet	UR 25	GEN-PROBE APTIMA Combo 2 Urine Collection Kit	Ambient
Legionella Pneumophila Antigen	LabNet	UR 25	UR 25	Refrigerate
Culture, Leptospira	LabNet	UR 25	Dilute 1 mL urine 1:10 in 1 percent bovine serum albumin within one hour of collection. Transport 4 mL diluted urine in a sterile container. (Min: 0.1 mL)	Ambient
Culture, Urine	LabNet	UR 25	Urine C&S Preservative Plus Plastic Tube, 4 mL	Ambient

*Continued on next page*

## PROCESSING RANDOM URINE SPECIMENS, *Continued*

Culture, Urine Transplant Protocol	LabNet	UR 25	Urine C&S Preservative Plus Plastic Tube, 4 mL	Ambient
Urine Culture (In Pregnancy)	LabNet	UR 25	Urine C&S Preservative Plus Plastic Tube, 4 mL	Ambient
Non-GYN Cytology	LabNet	UR 25	UR 25 Add equal volume 50% alcohol fixative	Ambient
Urinalysis	LabNet	UR 25	BD UA Preservative Tube	Ambient

Below is illustration of aliquot tubes/containers being used.



Urine C&S Preservative plus Plastic Tube, 4 mL



10 mL Urine Tube - UR 10



30 mL Light-Protective Urine Submission Container  
 (For urine requiring protection from light)

*Continued on next page*



## PROCESSING RANDOM URINE SPECIMENS, *Continued*

---



25 mL Urine Cup – UR 25



GEN-PROBE APTIMA Combo 2  
Urine Collection Kit



GWH3



BD UA Preservative Tube



Urine with equal amount of Fixative

---

*End of Page*