

QuantiFERON-TB Gold **Plus**



*Please watch the
Instructional video
and Complete the
Competency quiz.*



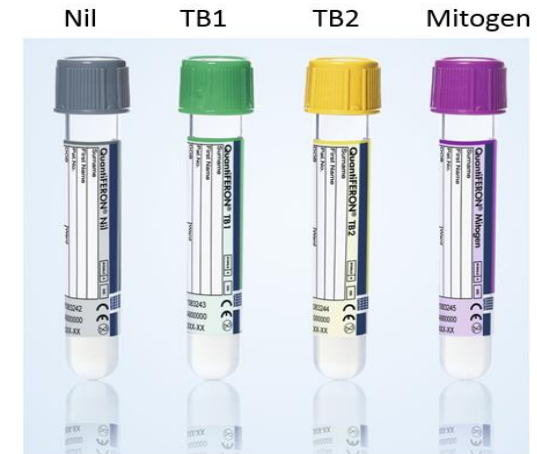
QFT TB Gold



August 1, 2018



QFT TB Gold Plus



The Go-live date of QFT-TB Gold Plus is August 1, 2018

QuantiFERON –TB Gold Plus

Nil tube (Grey)

Negative control to adjust for background IFN- γ

TB1 tube (Green)

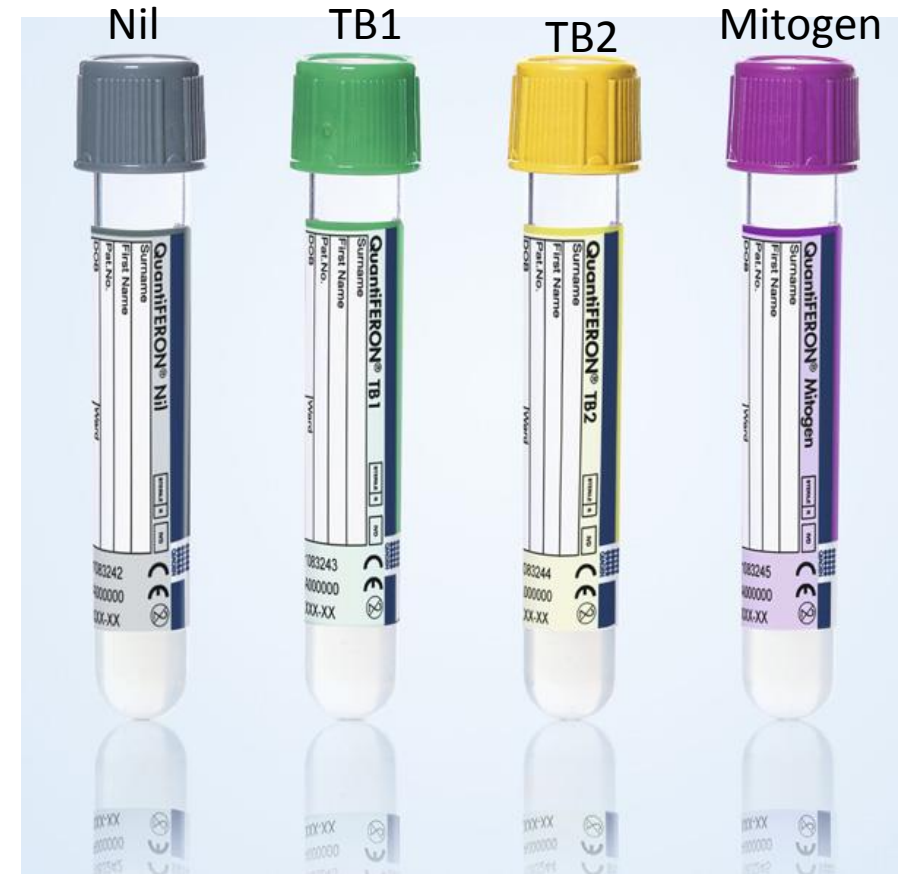
Primarily detects CD4+ T cell response

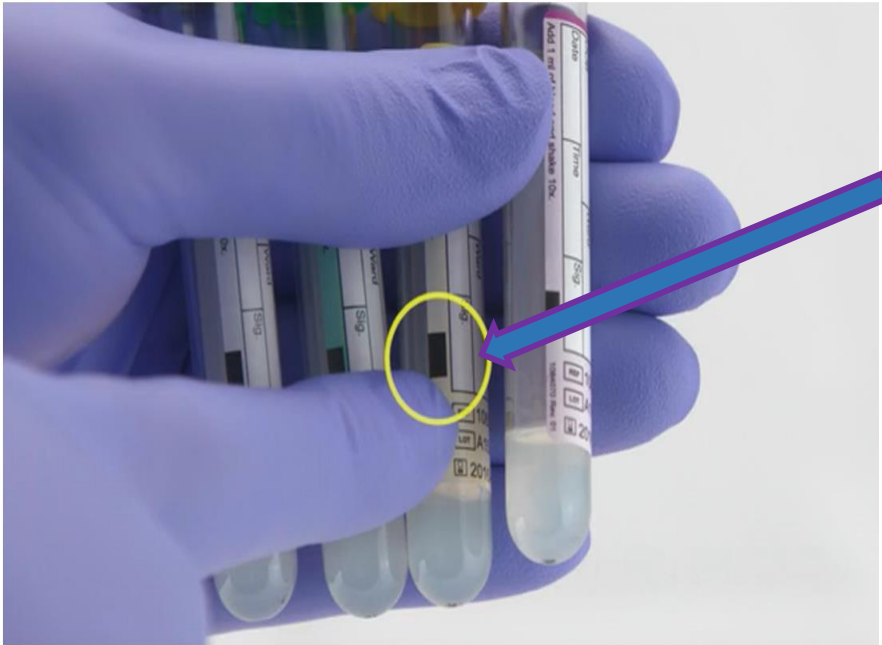
TB2 tube (Yellow)

Optimized for detection of CD4+ and CD8+ T cell responses

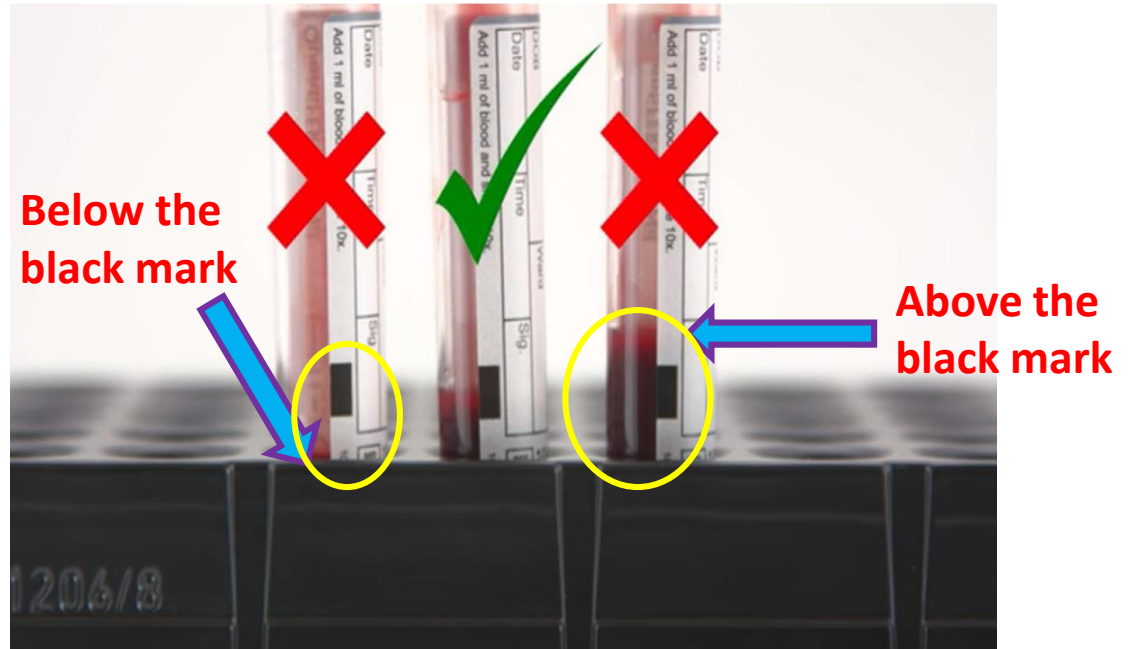
Mitogen tube (Purple)

Positive control to confirm baseline immune status

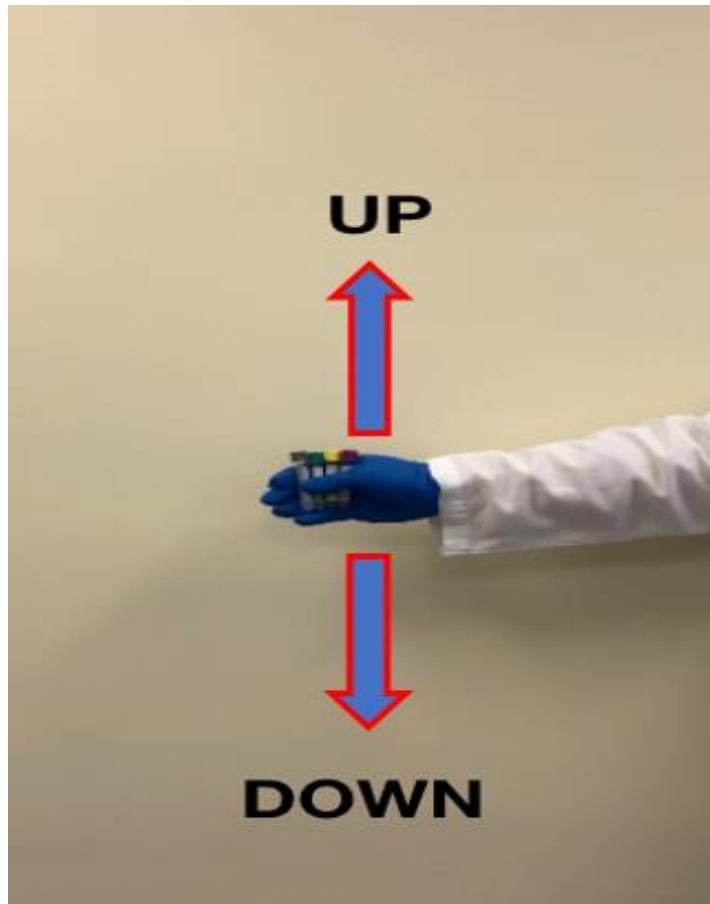




The black mark on the side of the tube indicates the range of **0.8 to 1.2mL** fill volume. Sample in all 4 tubes **MUST BE WITHIN** the black mark. **DO NOT** send to SWL/CHL if the sample in any of the tubes is above or below the black mark.



Proper shaking of tubes



- Mix the tubes by shaking them **10 times** (up and down motion) just firmly enough to coat the entire inner surface of the tube with the blood. Note: **Over energetic shaking may cause gel disruption and could lead to inaccurate results.**
- Place tubes upright in a test tube rack. Mixing is required to ensure complete integration of the tube's contents into the blood.
- Label tubes appropriately with **TIME and DATE** of collection.



DO NOT INCUBATE & CENTRIFUGE AT THE MEDICAL CENTERS OR MOBS

Blood should be maintained at room temperature (22°C ± 5°C)

Samples must be delivered to Chino Hills RL or Sherman Way RL within 16 hours of collection



**Please send the samples to
SWRL or CHRL immediately**

- **Do not freeze**
- **Do not use PCM**
- **Do not store in Ice**
- **Do not refrigerate**



