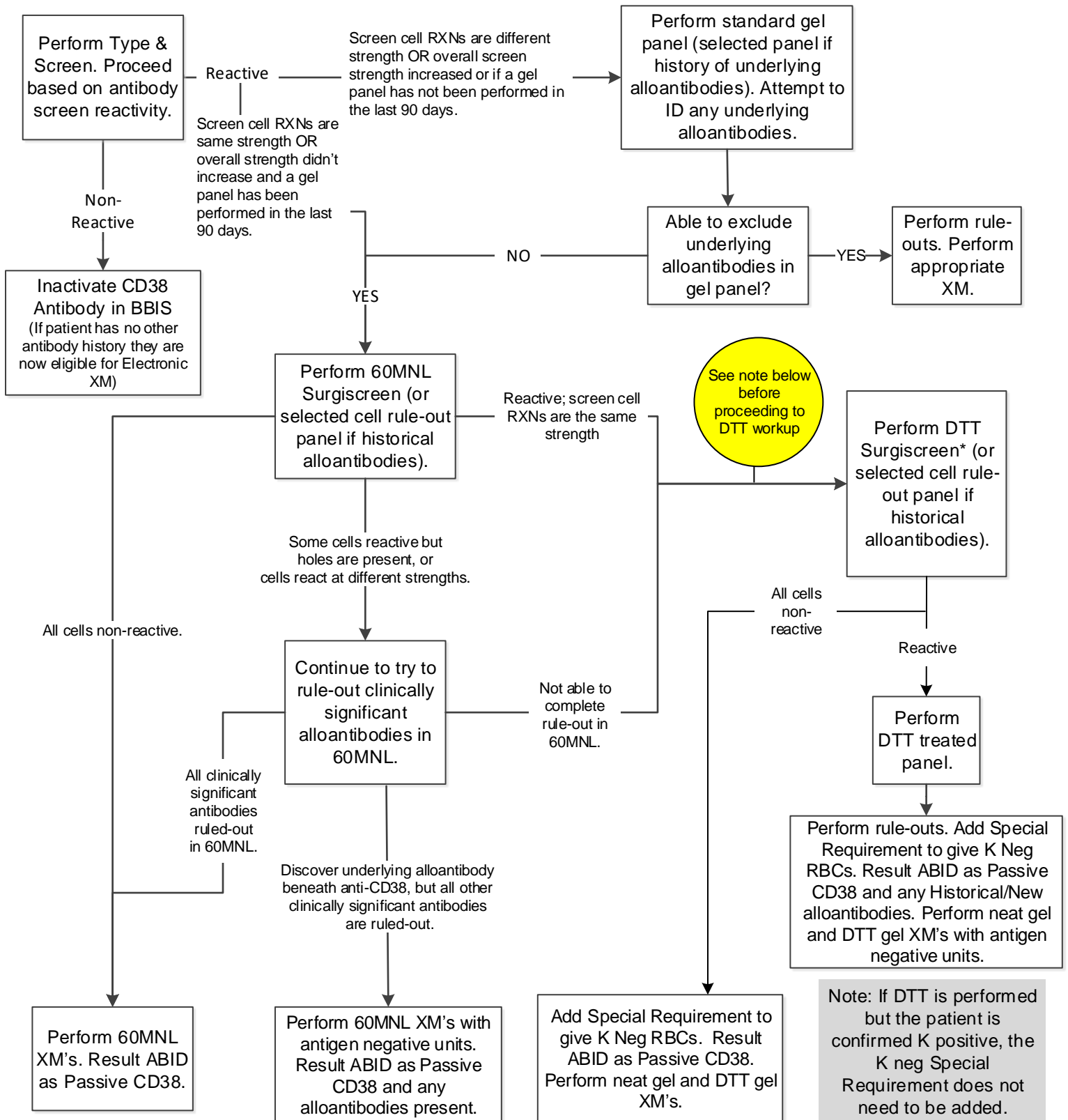


Anti-CD38 Evaluation Flowchart



Note: If phenotypically matched units can be obtained, pheno-matched RBCs least-incompatible by 60MNL can be crossmatched in lieu of DTT Testing if the patient has a history of Anti-CD38 Antibody AND the following criteria are met:

- A DTT work-up has been completed in the last 90 days.
- Current reactions are consistent with expected reactivity.
- Current reactivity is the same strength or weaker than previous results.