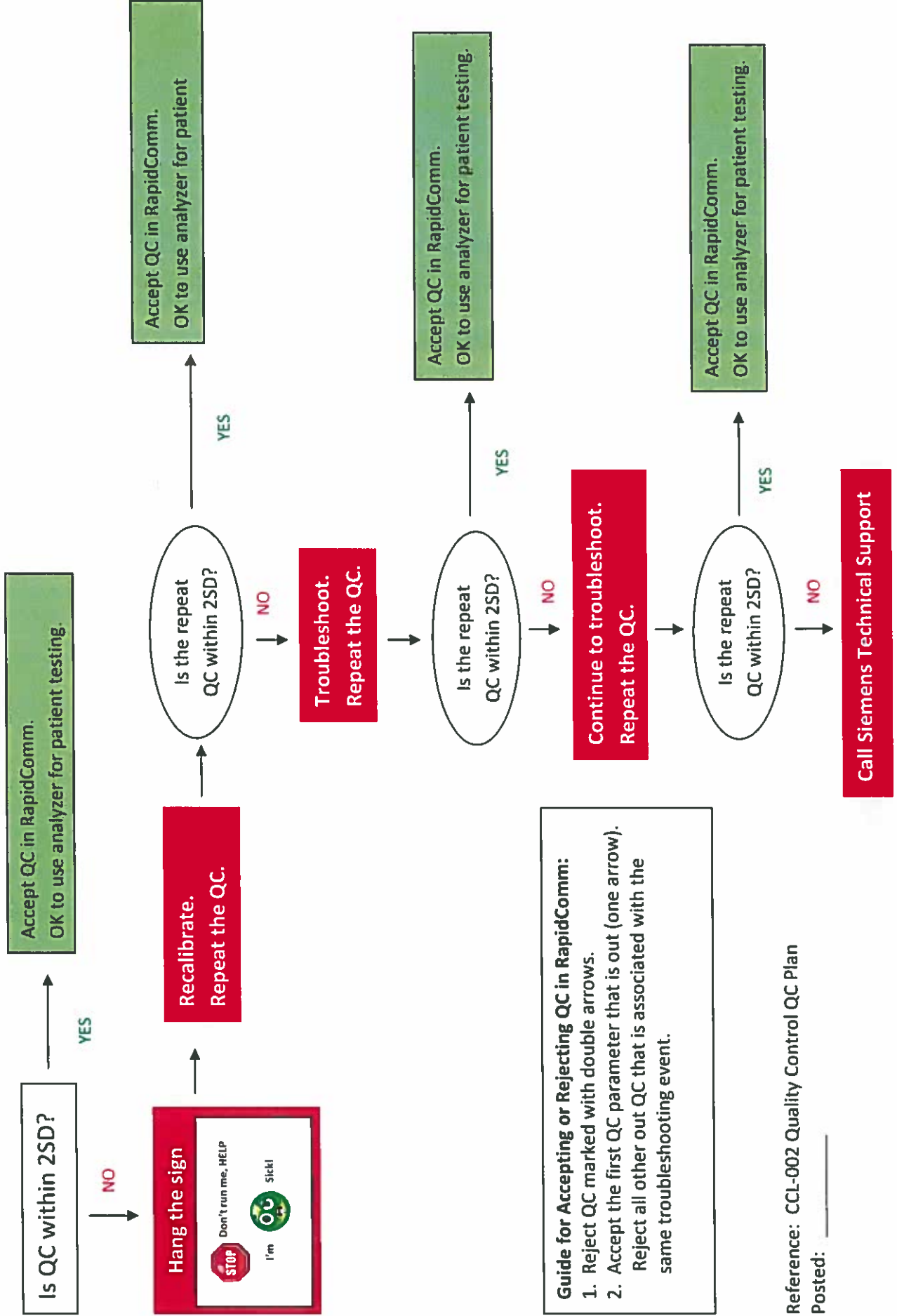


CCL-QRG-012 BGAS QC Flowchart

- All parameters must be within 2SD in order to use the analyzer for patient testing.
- Process all QC in RapidComm. (If a parameter has 2 arrows, mark the QC as rejected)



Guide for Accepting or Rejecting QC in RapidComm:

1. Reject QC marked with double arrows.
2. Accept the first QC parameter that is out (one arrow).
Reject all other out QC that is associated with the same troubleshooting event.

Reference: CCL-002 Quality Control QC Plan

Posted: _____