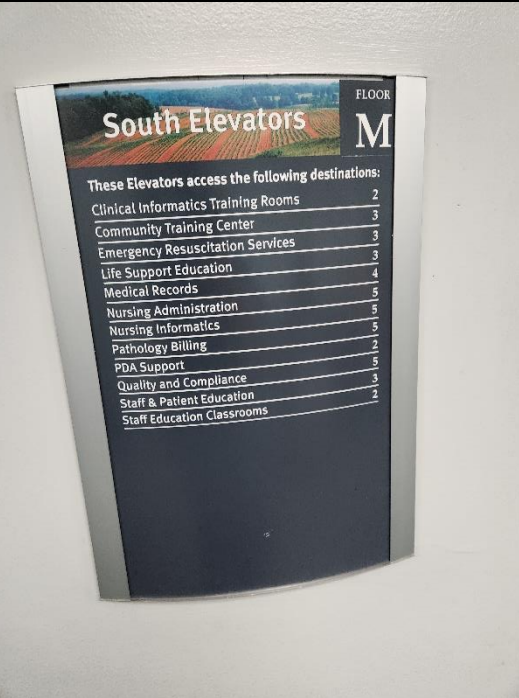


Gray 2111 Location and Breaker Box

If SPOT calls about the **Refrigerator, Reagent-Specimen-C066377 Tag: 2636937** being out of range, the breaker was likely tripped. See the directions below to reset the breaker.

Take the South Elevators (by Lisa's Office) to Level 2.



Turn Right out of the Elevators and then Left.



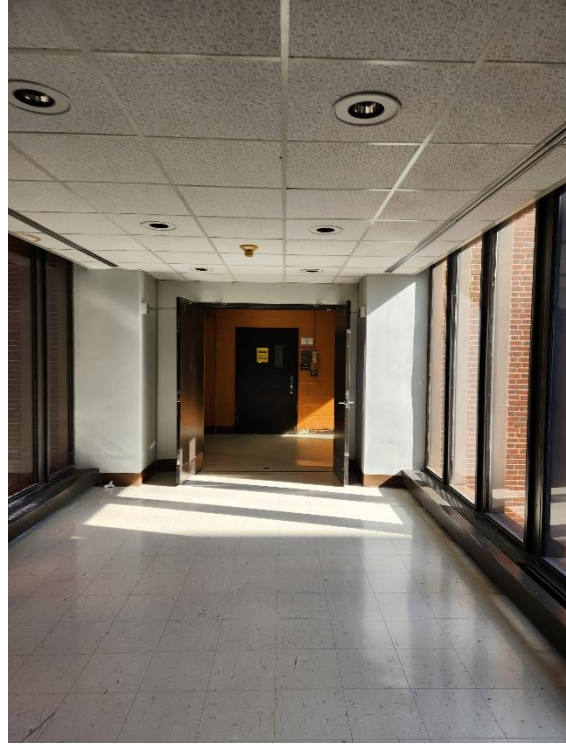
Continue straight down the hallway



Go through the double doors.



Continue Straight



Open the badge access door into the Gray building



Make a right at the first hallway



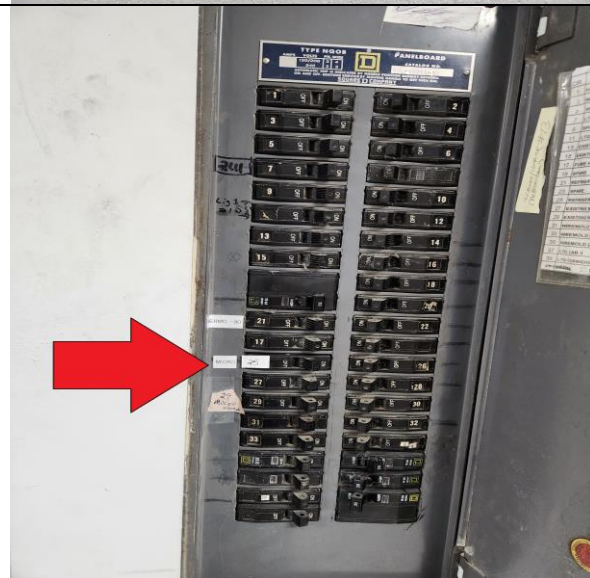
Continue straight down the hallway



Breaker Panel



The MICRO 25 breaker should be in the “tripped” position. Push the breaker left to “OFF” position. Then push the breaker right to the “ON” position



Go into 2111 to confirm that the fridge has power. If the fridge does not turn on, contact trimedx at 6-4357. Contact a supervisor if needed.

NOTE:

If flipping the breaker does not fix the refrigerator to remove everything on the left hand side of the fridge. Place all of the left hand side items → downstairs to the walk-in refrigerator by Eric's office. Includes our Focus PCR Box, a green rack that has our DNA Internal Control in it, our Magnetic Silica boxes, our Nuclisens Easymag Extraction Buffer #3 bottles, a bottle of Phosphate Buffer, and any patient samples (if any) on that left hand side.

