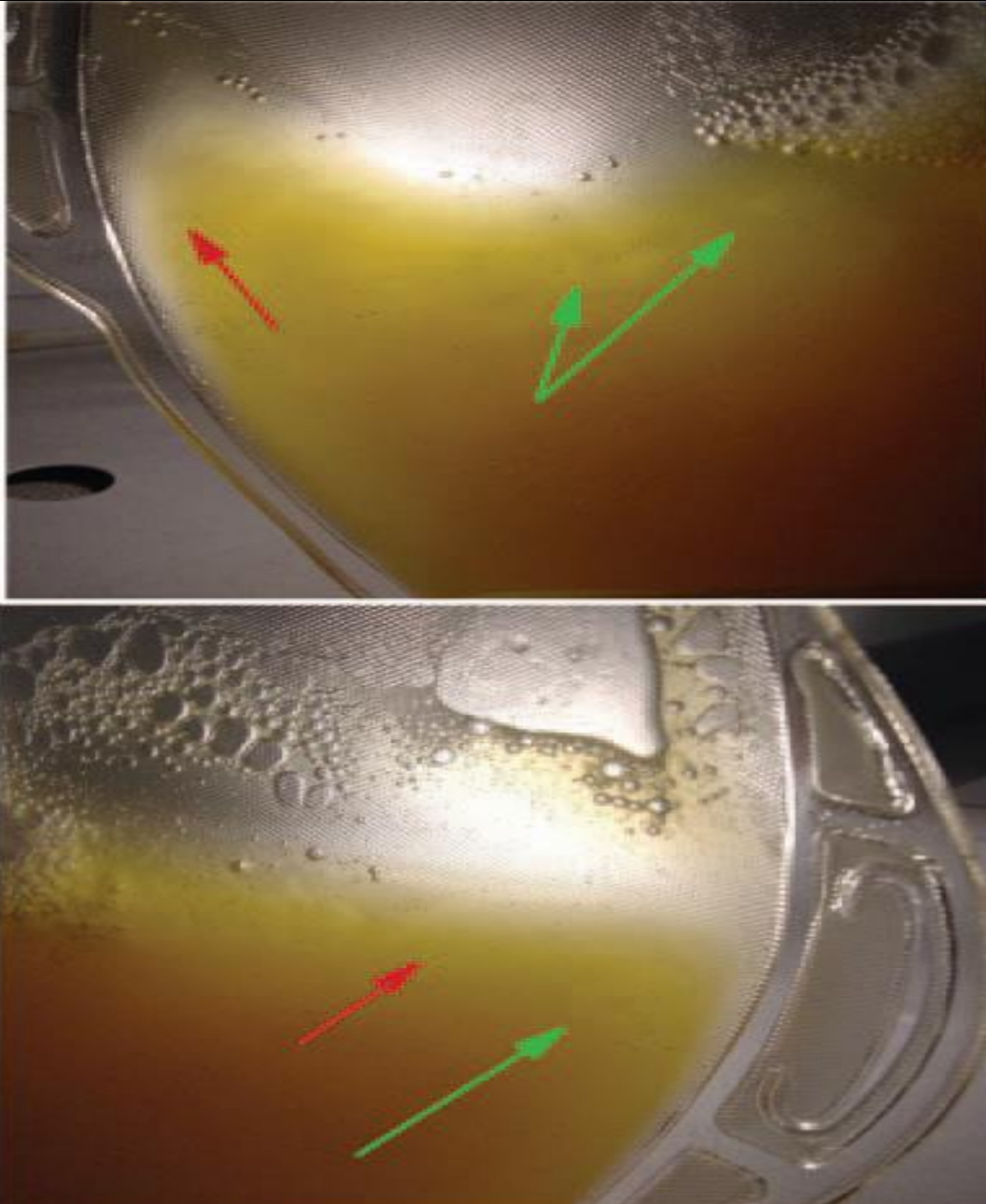

**JOB AID: EVALUATION OF PLATELET SUITABILITY FOR
TRANSFUSION BASED ON SWIRLING, TEMPERATURE AND TIME**

RC.BB.IRI.PR.409 Attachment A.r00.01.00



Swirling can be seen at the top of the bags as indicated by the green arrows, and areas of the bag where swirling is not evident are indicated by the red arrows.

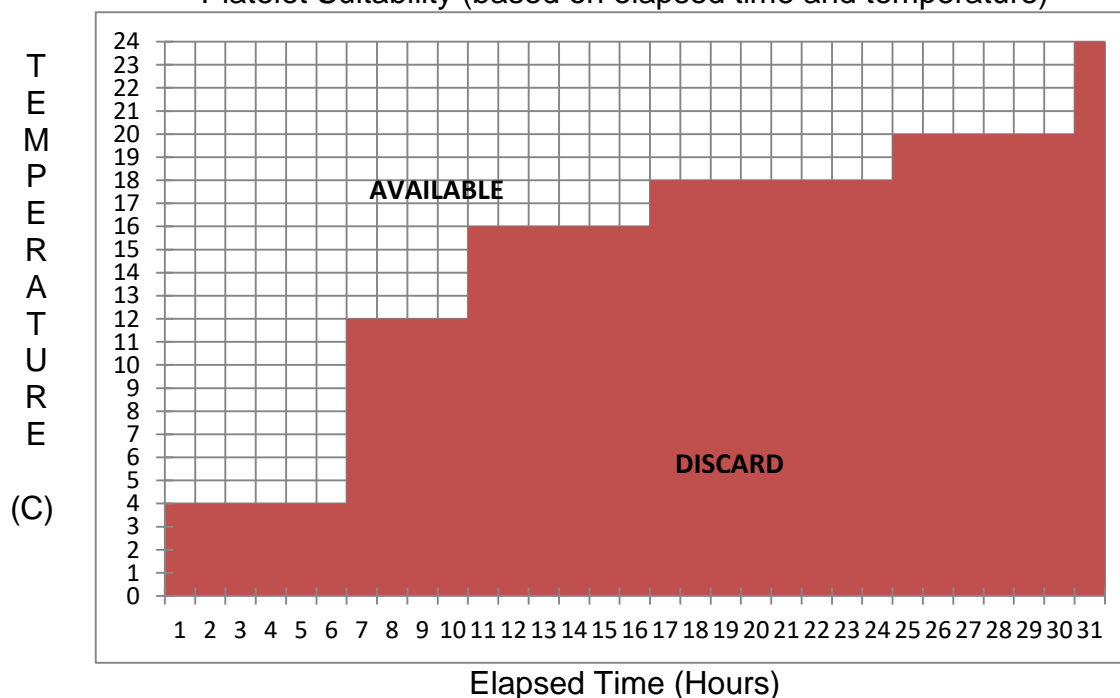
Printed copies of this document are not considered up-to-date. Please verify current version date with online document.

JOB AID: EVALUATION OF PLATELET SUITABILITY FOR TRANSFUSION BASED ON SWIRLING, TEMPERATURE AND TIME

Evaluation of Platelet Suitability for Transfusion based on Swirling, Temperature, and Time

Temperature	Elapsed Time (Issue to Return)	Swirling	Appropriate Status
Any temperature	More than 30 hours	Yes	Discard
24°C – 26 °C	30 hours or less	Yes	Quarantine
20°C to 24 26°C	30 hours or less	Yes	Available
More than 18°C; less than 20°C	24 hours or more	Yes	Discard
	Less than 24 hours	Yes	Available
18°C or less	24 hours or more	Yes	Discard
More than 16°C; less than 18°C	16 hours or more	Yes	Discard
	Less than 16 hours	Yes	Available
16°C or less	16 hours or more	Yes	Discard
More than 12°C; less than 16°C	10 hours or more	Yes	Discard
	Less than 10 hours	Yes	Available
12°C or less	10 hours or more	Yes	Discard
More than 4°C; less than 12°C	6 hours or more	Yes	Discard
	Less than 6 hours	Yes	Available
4°C or less	Any amount of time	Yes	Discard

Platelet Suitability (based on elapsed time and temperature)



Printed copies of this document are not considered up-to-date. Please verify current version date with online document.

JOB AID: EVALUATION OF PLATELET SUITABILITY FOR TRANSFUSION BASED ON SWIRLING, TEMPERATURE AND TIME

Document Control

Location of Master: Master electronic file stored on the Beaumont Laboratory server under S:/ Master printed document stored in the *Transfusion Medicine Standard Operating Procedures Manual*.

Number of Controlled Copies posted for educational purposes: 0

Number of circulating Controlled Copies: 1

Location of circulating Controlled Copies: Triage Area / on the Platelet Rotator

Document History

Signature	Date	Revision #		Related Documents Reviewed/ Updated
Prepared by: Jennifer Sarhan	03/01/2012	r00.00.00		
Validated by: Heather Baker	03/28/2012			
QA: Louisa Serafimovska	03/28/2012			
Supervisor: Judy Easter	03/28/2012			
Approved by: Peter Millward, MD	03/28/2012			
Reviewed by: (Signature)	Date	Revision #	Modification	Related Documents Reviewed/ Updated
Reviewed by: Peter Millward, MD	07/30/2012			
Reviewed by: Peter Millward, MD	08/01/2013			
Reviewed by: Peter Millward, MD	07/24/2014			
Reviewed by: Peter Millward, MD	03/10/2015			
Revised by: Ashley Wilson	03/09/2016	r00.00.01	Added Platelet Suitability Chart from P409.	
Approved by: Peter Millward, MD	03/11/2016			
Approved by: Peter Millward, MD	05/03/2017			
Approved by: Elizabeth Sykes, MD	02/22/2018			
Revised by: Christopher Ferguson	01/03/2019	r00.00.02	Updated to match <i>Evaluation of Platelet Suitability for Transfusion based on Swirling, Temperature, and Time</i> update in P409. Updated template.	
Approved by: Craig Fletcher, MD	01/03/2019			
Approved by: Peter Millward, MD	02/26/2019			
Approved by: Craig Fletcher, MD	03/27/2019			
Approved by: Craig Fletcher, MD	07/23/2020			
Revised by: Samantha Maynard	09/01/2021	r00.01.00	Updated to match <i>Evaluation of Platelet Suitability for Transfusion based on Swirling, Temperature, and Time</i> update in P409.	
Manager:				
Approved by: Craig Fletcher				

Printed copies of this document are not considered up-to-date. Please verify current version date with online document.

Document Control, cont.

Printed copies of this document are not considered up-to-date. Please verify current version date with online document.