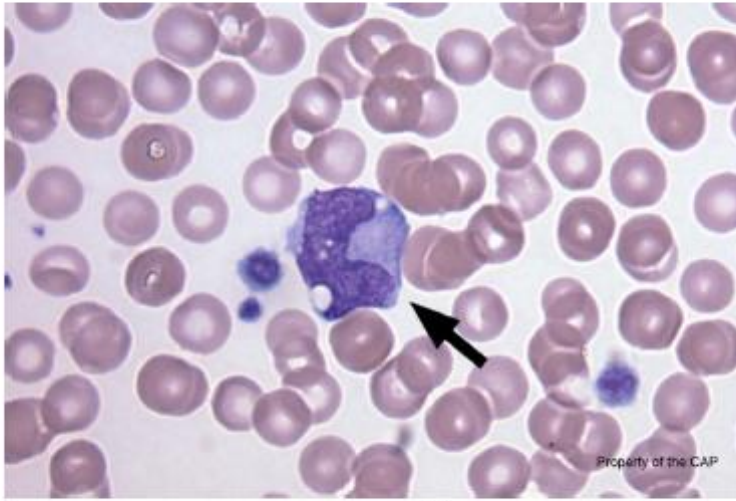


Blood Cell Identification – Graded

BCP-13



Identification	Referees		Participants		Evaluation
	No.	%	No.	%	
Monocyte	110	99.1	5067	97.4	Good

The arrowed cell is a monocyte as correctly identified by 99.1% of the referees and 97.4% of the participants. Monocytes are 12 to 20 μm in size, slightly larger than neutrophils, with an N:C ratio ranging between 4:1 and 2:1. The monocyte is characterized by pale grey-blue cytoplasm with variable vacuoles and scant granules, and irregular to folded nuclear contours. The chromatin is mature and condensed, but with a slightly more lacy quality in comparison to the neutrophil.