

Quick review of DOAC's samples

01/07/2019 – 30/11/2019

These graphs are purely constructed from clinical details supplied.

Obvious outliers removed.

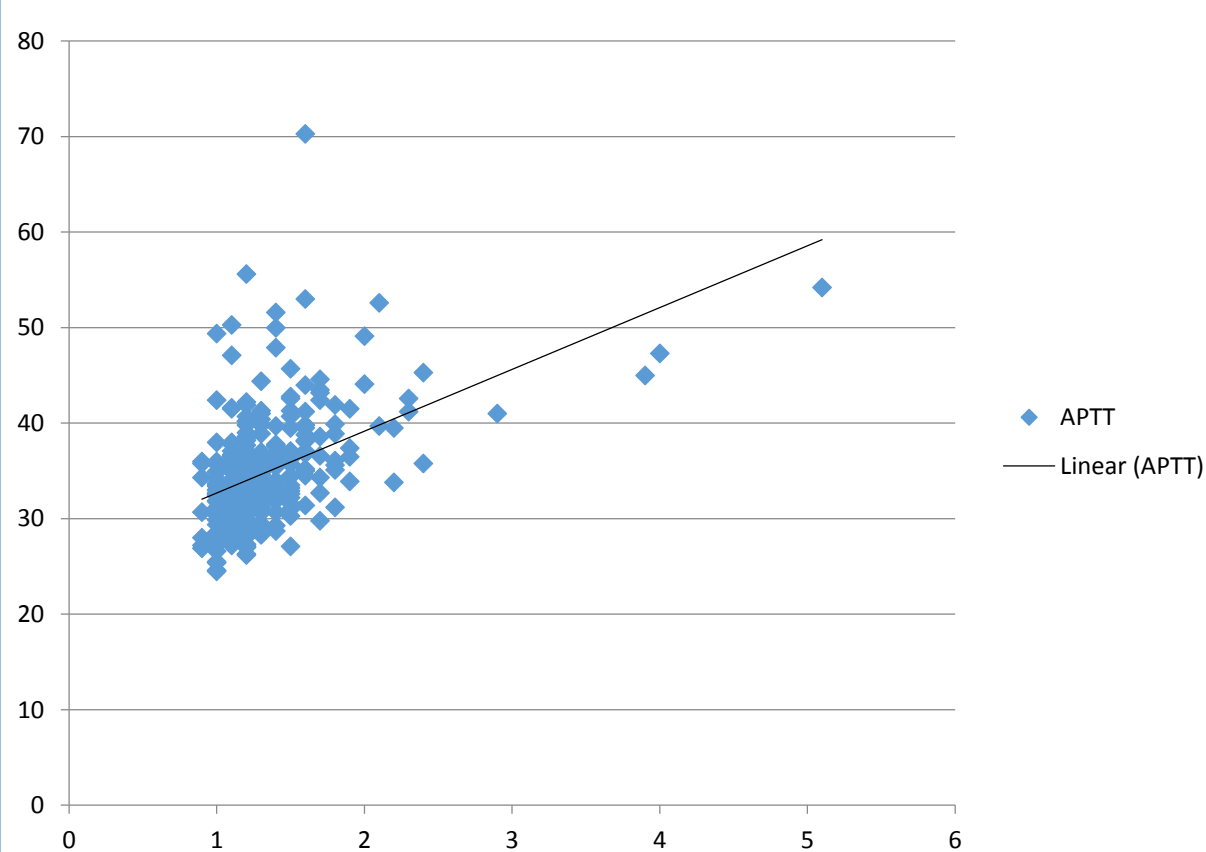
Levels not actually assayed for DOAC's

Bottom Axis of graphs is INR

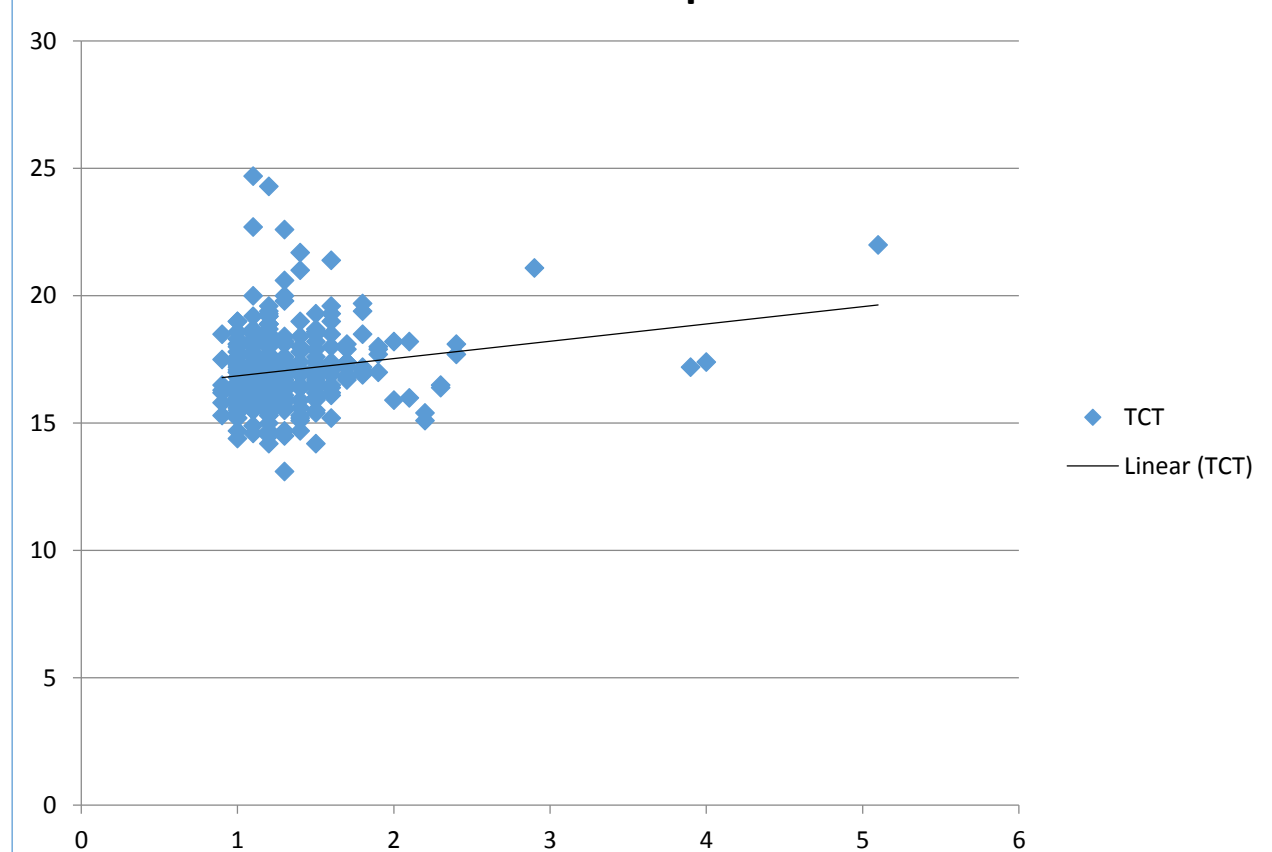
Typical Apixaban

INR = 1-5, APTT 25-60 and TCT 12-25

APTT - APIX

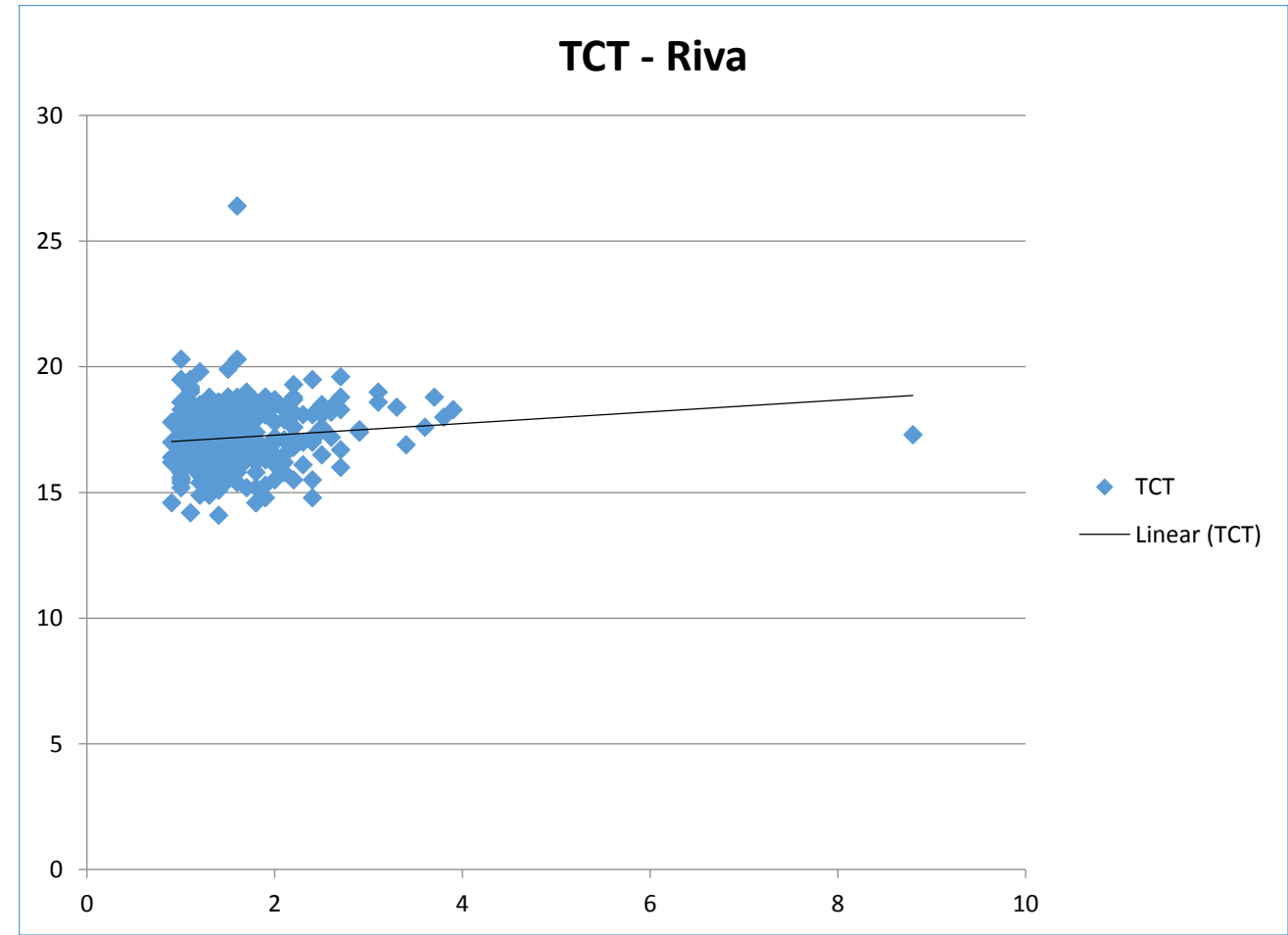
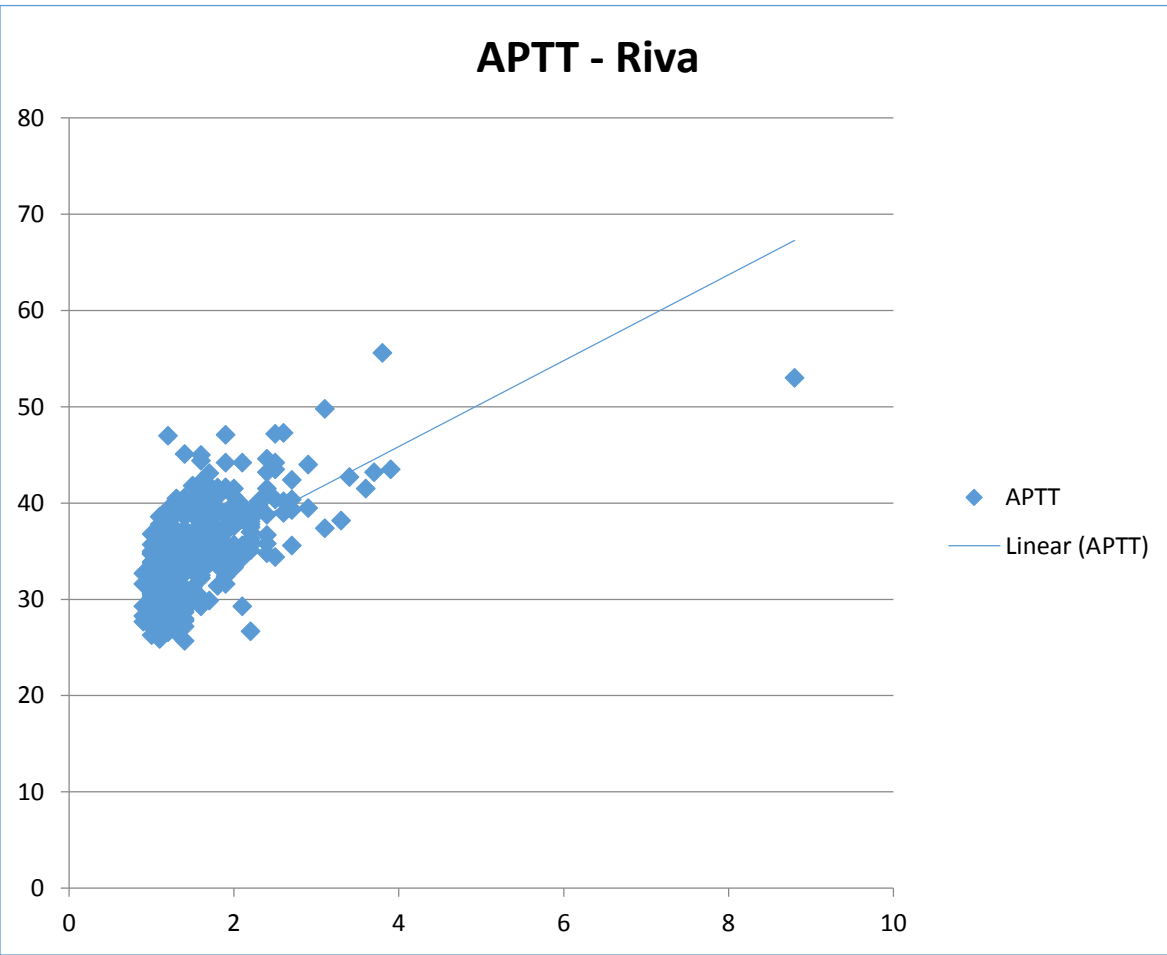


TCT - Apix



Typical Rivaroxiban

INR = 1-4, APTT 25-50 and TCT 12-25



Typical Dabigatran

INR = 1-2, APTT 25-55 and TCT 16-200

