

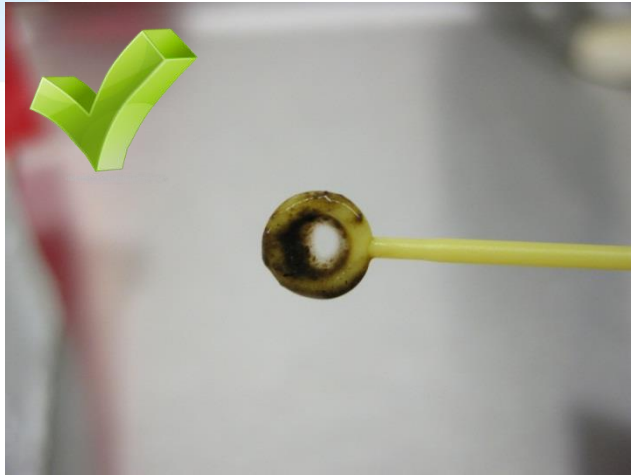
Sample Preparation

- Inoculation of SBT
 - Unpreserved stool:
 - Insert a 10 μ L disposable inoculation loop until the entire loop portion is submerged in the specimen. Do not insert beyond the loop as any additional stool on the shaft can overload the PCR reaction.
 - Insert the loaded loop into the SBT and express the specimen using a swirling motion. Remove loop from SBT.
- Note:** It is not necessary to remove the entire specimen from the loop. The resultant SBT solution should not be darker than a “tea-stained” color.
- Recap inoculated SBT using a Septum Cap.

Sample Preparation

- Inoculation of SBT
 - A loop bubble may be difficult to achieve with watery stool and fixed specimens. Care should be taken to inoculate with a full loop if at all possible.
 - Watery stool and fixed looping tips:
 - With watery stools and watery fixed specimens a gentle scooping motion with the loop can help achieve a full loop.
 - Take care not to touch the sides of the collection vessel as this can pop the bubble.
 - Often the loop will need to be submerged a few times before a bubble will form.

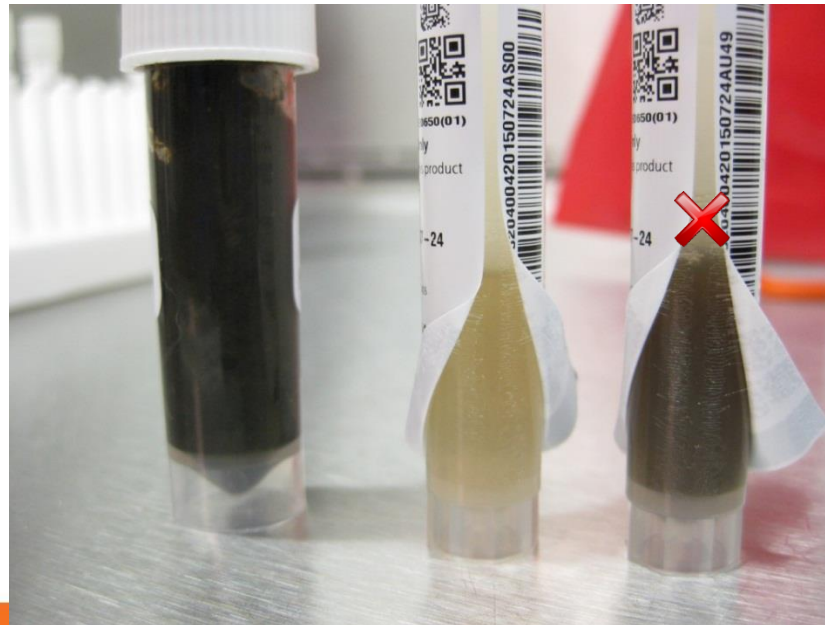
Looping: over-inoculating



A bubble is observed and only the loop was submerged in the specimen



Overloaded loop and onto the shaft



SBT darker than "tea-stained" color

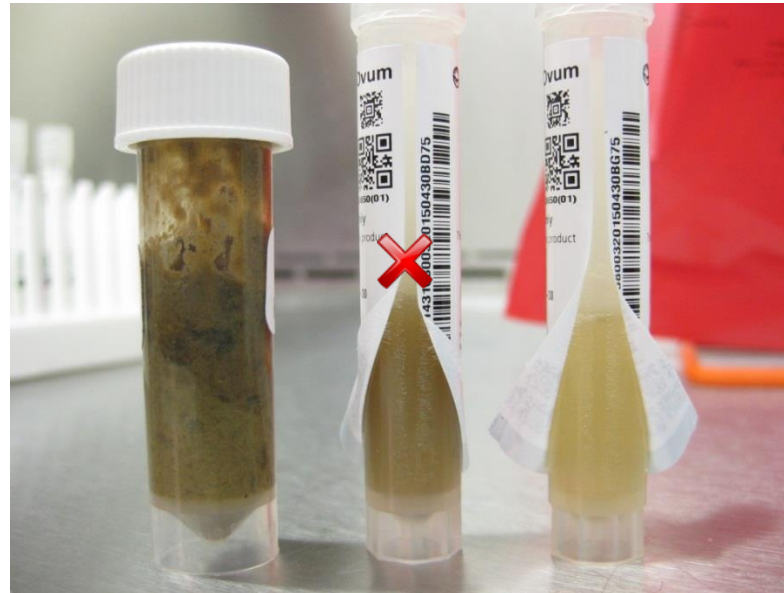
Looping: over-inoculating




Overloaded loop and onto the shaft

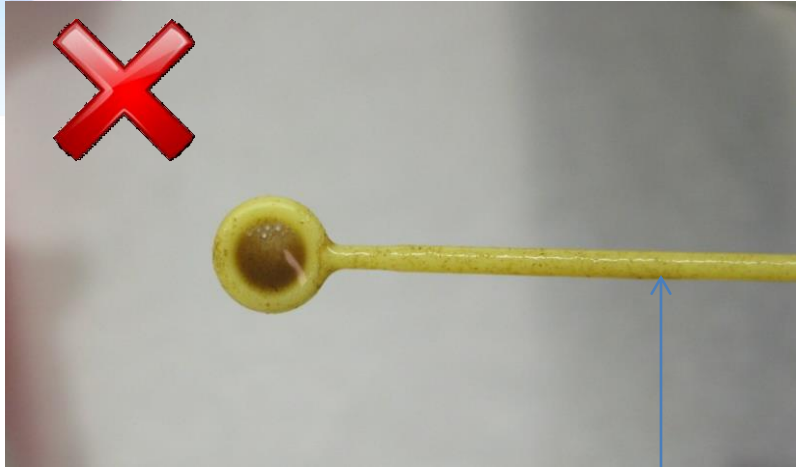


When a specimen is dense a full bubble is not necessary as long as the rim of the loop is covered

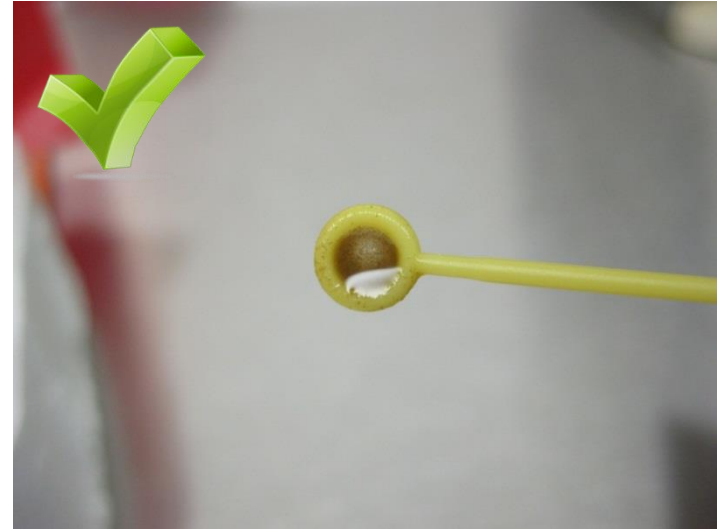


 SBT darker than “tea-stained” color

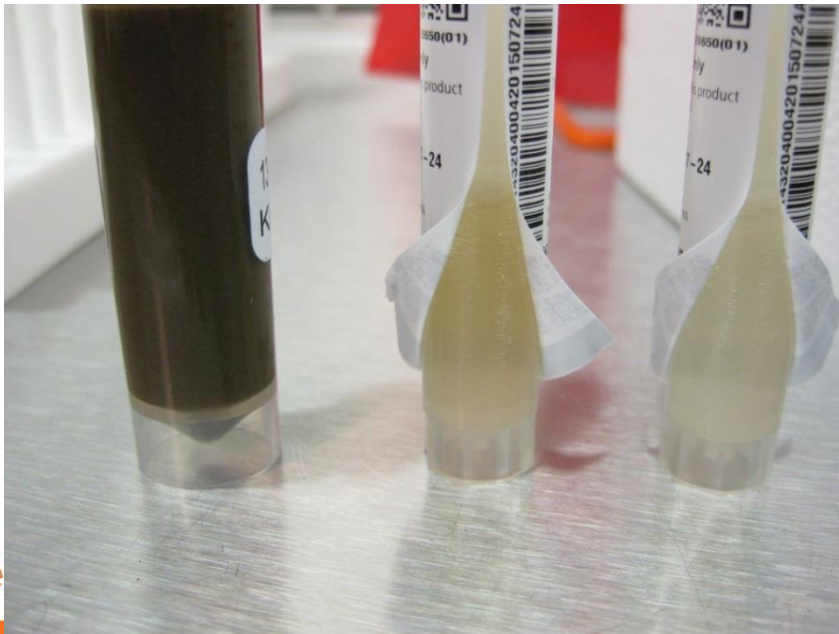
Looping: over-inoculating



Loop submerged beyond the loop, stool onto the shaft

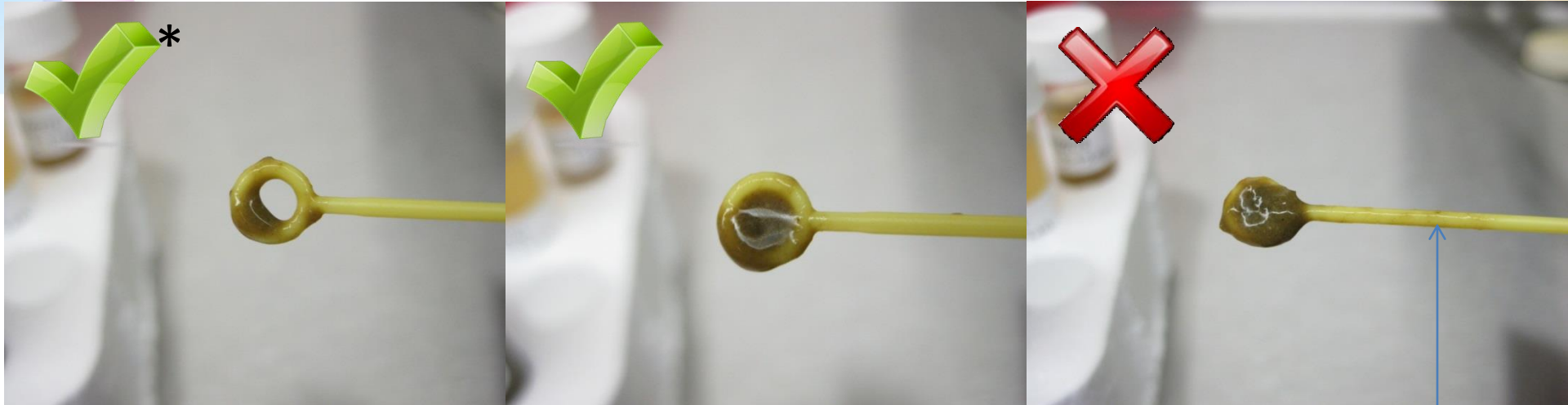


Full bubble and not submerged beyond the loop



This specimen is very watery – it would be very difficult to over-inoculate the SBT with this specimen. However, it is good practice to avoid inoculating the SBT with any specimen on the shaft of the loop.

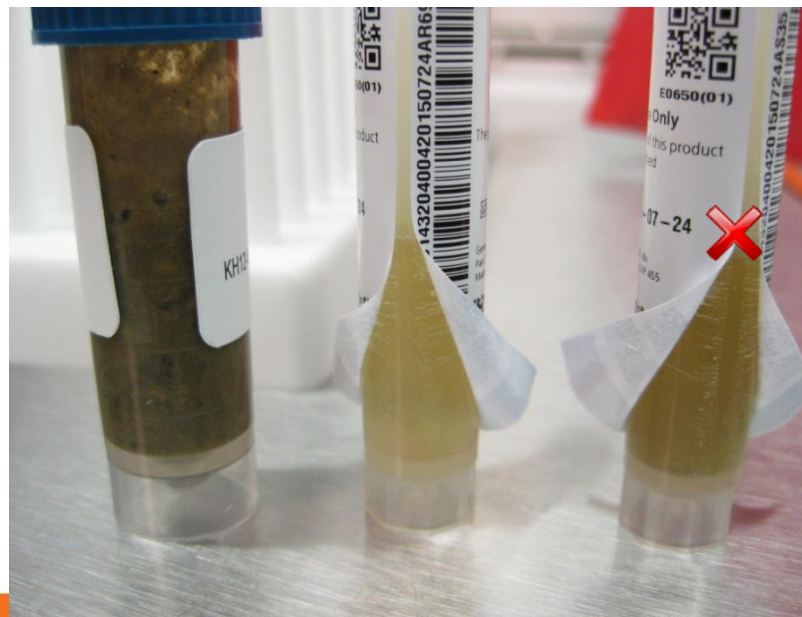
Looping: over-inoculating



*Although not a full loop the entire rim is coated – not ideal but acceptable

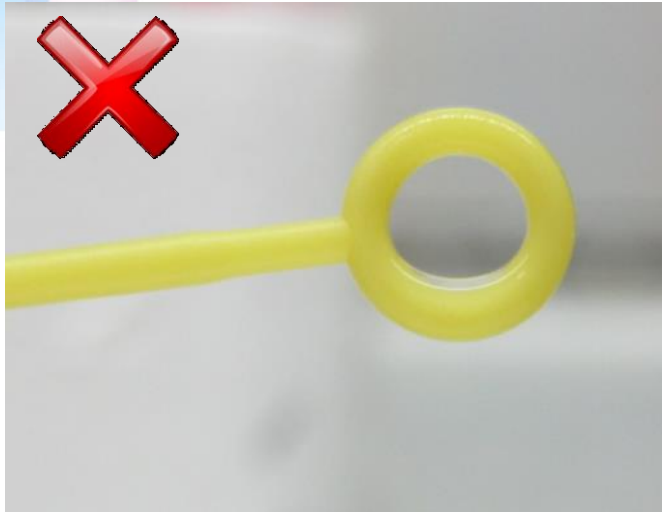
Full loop, not submerged beyond loop

Overloaded loop, stool onto the shaft

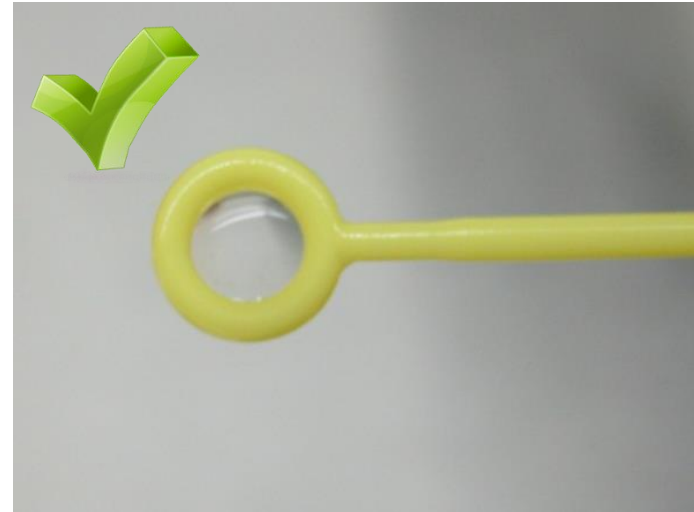


SBT darker than “tea-stained” color

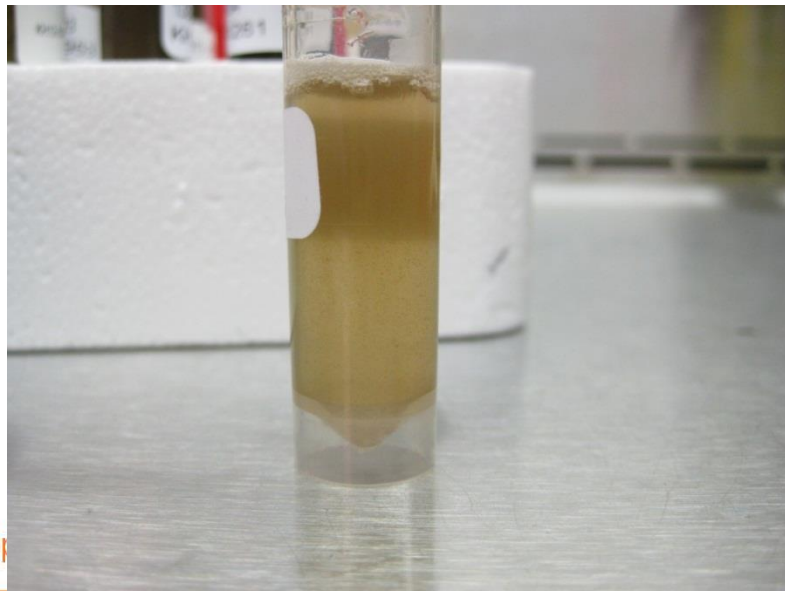
Looping: under-inoculating



Popped bubble, should try again for a full loop

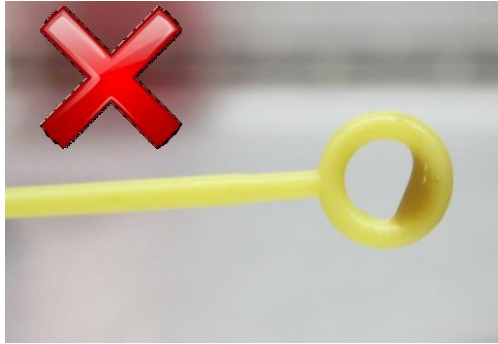


Full loop, complete bubble

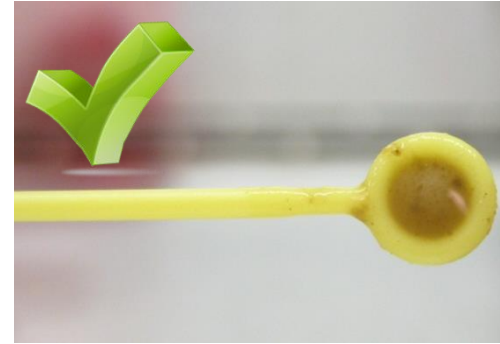


Watery stool

Looping: under-inoculating

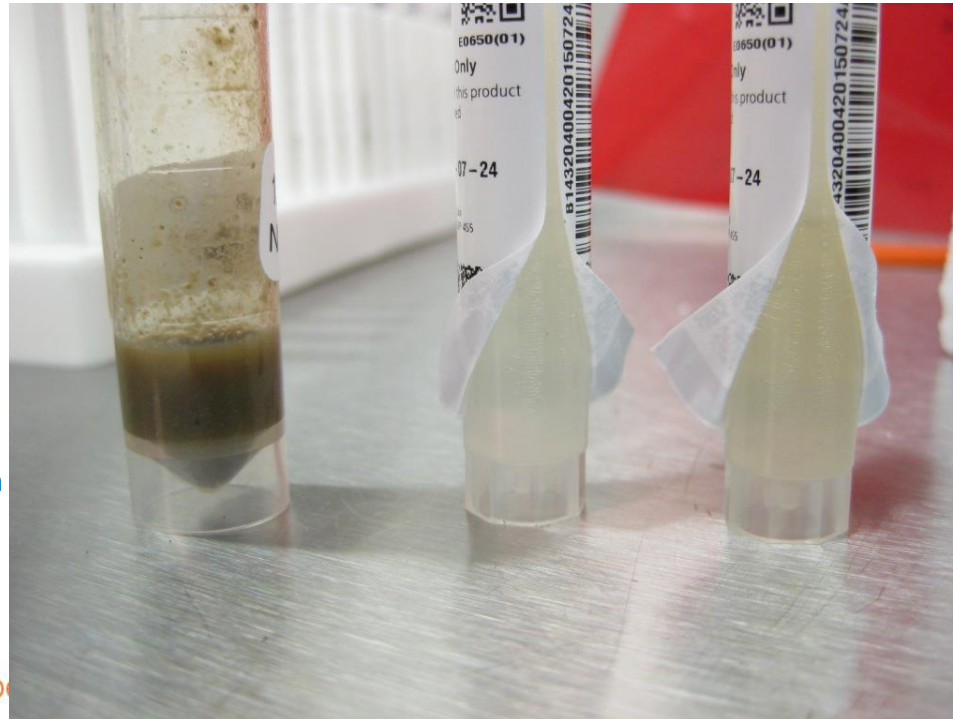


Popped bubble, should try again for a full loop



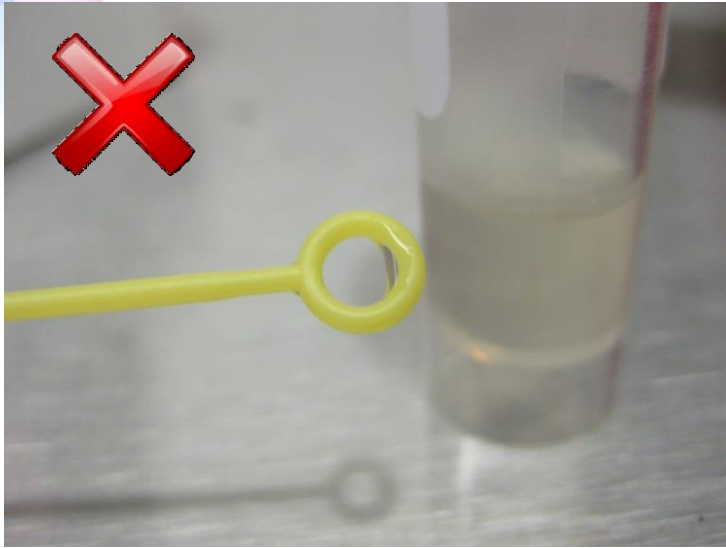
Full loop, complete bubble

Fixed specimen

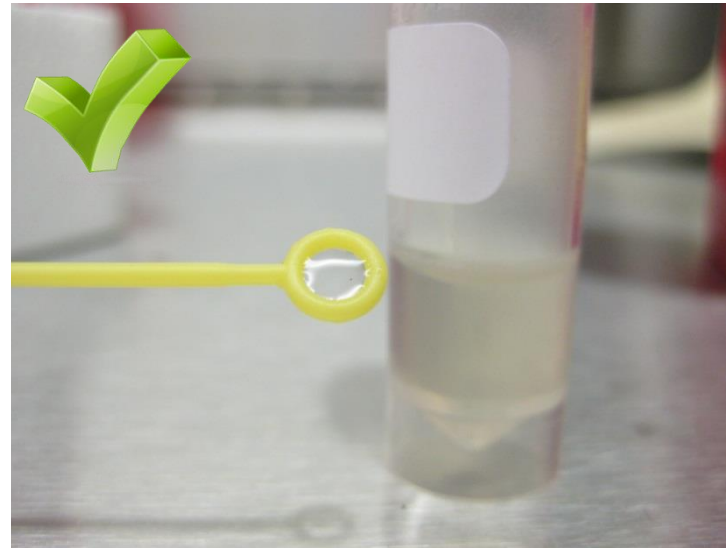


Looping: under-inoculating

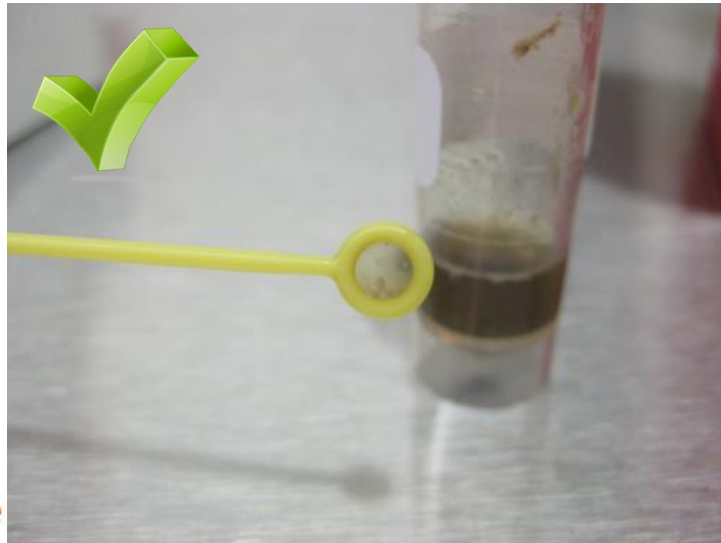
Fixed specimens



Popped bubble, should try again for a full loop

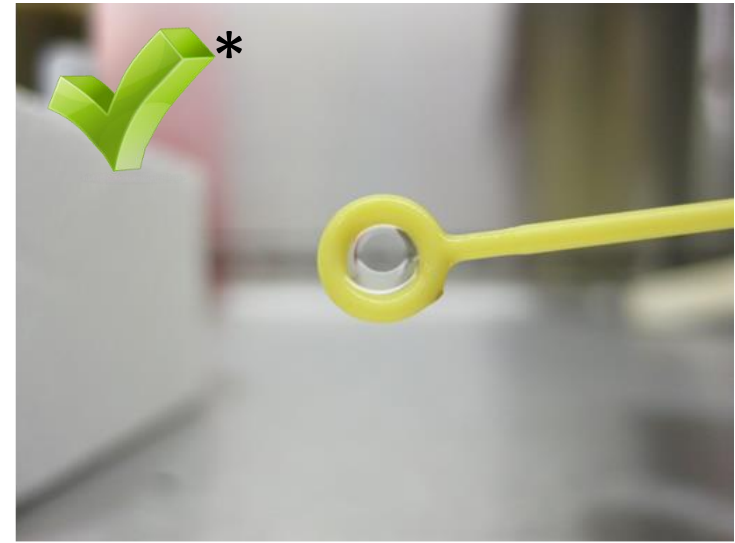


Full loop, complete bubble



Technical Service

Full loop, complete bubble



*Full loop, thin bubble – not ideal but acceptable