

Corn Meal Agar with Tween 80 Agar Medium

Frequency of QC testing

Each new lot or shipment

Control organism

Candida albicans ATCC 90028

Candida glabrata ATCC 15126

Procedure

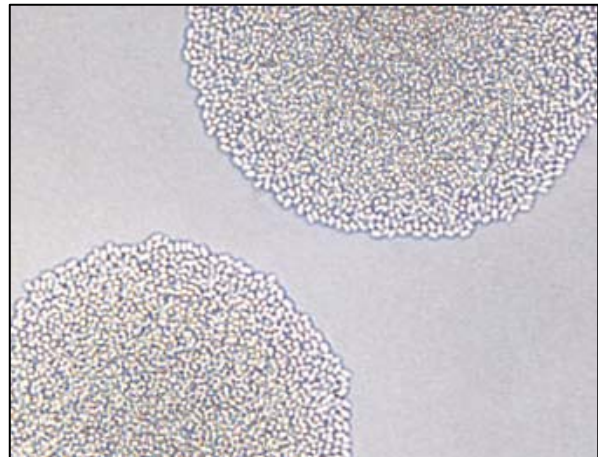
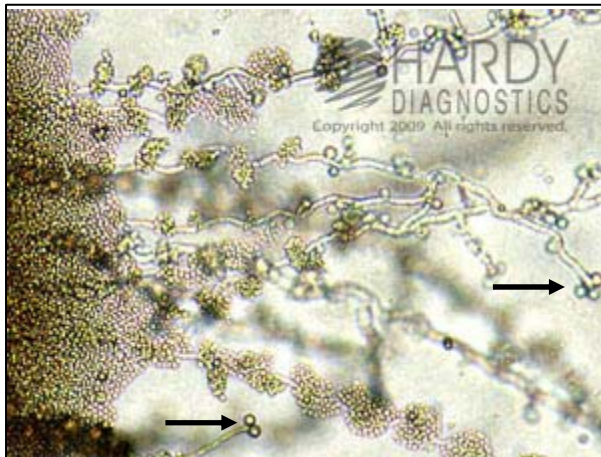
1. Using a sterile inoculating needle, harvest a portion of a young, actively growing yeast colony.
2. Make a streak on the agar surface without cutting into the agar. Make three or four streaks perpendicular to the first streak to dilute the inoculum.
3. Cover with a 22 x 22-mm coverslip.
4. Seal the plate with tape and incubate aerobically at room temperature ($25 \pm 2^\circ\text{C}$) for up to 3 d in the dark. Examine daily for growth.
5. Examine by placing the plate, without its lid, on the microscope stage and using the low power (X 100) and high-dry (X 400) objective. The most characteristic morphology is often found along the edge of the coverslip.

Expected Results

C. albicans 90028 - Growth; hyphae, budding cells, and chlamydoconidia seen

C. glabrata 15126 - Growth; no chlamydoconidia seen

Low power (X 100)



Computer Entry of Results

Function: MQCE

Select: TESTQC

Category: UNSCHEDULED

Item Code: CORN80

Results: OK

Entering New Lots

MFG Code: HARDY