



**Stanton Territorial Hospital**  
P.O. Box 10, 550 Byrne Road  
YELLOWKNIFE NT X1A 2N1

Document Number: MIC53500

Version No: 1.0

Page: 1 of 3

Distribution:  
Microbiology Test Manual

Effective:  
Date Reviewed:  
Next Review:

Document Name: Satellite Test

Approved By:

Status: **DRAFT**

**PURPOSE:** The satellite test is used as an identification test for *Haemophilus influenzae*.

**SAMPLE INFORMATION:**

Type	One, well isolated colony
------	---------------------------

**REAGENTS and/or MEDIA:**

- Blood agar
- Chocolate agar

**SUPPLIES:**

- QC organism: *Staphylococcus aureus* ATCC 25923
- Disposable loops or needles
- 35° CO<sub>2</sub> incubator

**SPECIAL SAFETY PRECAUTIONS:**

Containment Level 2 facilities, equipment, and operational practices for work involving infectious or potential infectious materials or cultures.

- Lab gown must be worn when performing activities with potential pathogens.
- Gloves must be worn when direct skin contact with infected materials is unavoidable.
- Eye protection must be used when there is a known or potential risk of exposure of splashes.
- All procedures that may produce aerosols, or involve high concentrations or large volumes should be conducted in a biological safety cabinet (BSC).
- The use of needles, syringes and other sharp objects should be strictly limited.

All patient specimens are assumed to be potentially infectious. Universal precautions must be followed. Since viable micro-organisms are used, all cultures must be handled with appropriate precautions. All equipment in contact with cultures should be decontaminated by appropriate methods.

**NOTE:** This is a controlled document for internal use only. Any documents appearing in paper form are not controlled and should be checked against electronic version prior to use.

FILENAME:

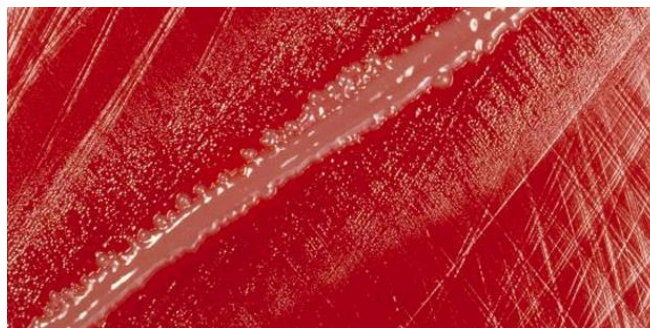
Print Date:

**PROCEDURE INSTRUCTIONS:**

Step	Action
<b>Performing the satellite test</b>	
<b>1</b>	Subculture organism being tested to Blood agar and Chocolate agar.
<b>2</b>	Using a disposable loop or needle, streak <i>Staphylococcus aureus</i> ATCC 25923 on the inoculated Blood agar plate.
<b>3</b>	Incubate the plates for 24 hours in the CO <sub>2</sub> incubator.
<b>4</b>	After 24 hours incubation, examine the Blood agar plate for the presence of colonies that satellite around the <i>Staphylococcus</i> streak.
<b>5</b>	Use the colonies growing on the Chocolate agar for further testing and susceptibility testing if required.

**INTERPRETATION OF RESULTS:**

IF	THEN
Growth of tiny colonies surrounding the <i>Staphylococcus</i> streak	<b>Satellite test = Positive</b>
No growth of tiny colonies surrounding the <i>Staphylococcus</i> streak	<b>Satellite test = Negative</b>



**NOTE:** This is a controlled document for internal use only. Any documents appearing in paper form are not controlled and should be checked against electronic version prior to use.

FILENAME:

Print Date:

**LIMITATIONS/PRECAUTIONS:**

- *Brucella* can be confused with *Haemophilus*; this test separates these genera, since *Brucella* spp. grows on Blood agar without *Staphylococci* to supply NAD.

**REFERENCES:**

- Clinical Microbiology Procedures Handbook, 4<sup>th</sup> edition, ASM Press, 2016.

**REVISION HISTORY:**

REVISION	DATE	Description of Change	REQUESTED BY
1.0	24 MAR 19	Initial Release	L. Steven