

FACILITY Standard Operating Procedure

Title: Code Red – Fire Response	Policy Number: 06-05-V2
Facility Name: Stanton Territorial Hospital	
Applicable Domain: Emergency Measures	
Additional Domain(s): NA	
Effective Date: <i>day/month/year</i>	Next Review Date: 18/06/2024
Issuing Authority: Stanton Territorial Hospital COO	Date Approved: 18/06/2021
Accreditation Canada Applicable Standard: 14.2, 14.3	
Accrediting Body and Standard: NA	

GUIDING PRINCIPLE:

Northwest Territory Health Social Services Authority - Stanton Territorial Hospital (NTHSSA – Stanton) is dedicated to providing patients and staff with a physical environment that is safe from hazards.

PURPOSE/RATIONALE:

The possibility of a fire may occur at any time. Northwest Territories Health & Social Services Authority – Stanton Territorial Hospital (NTHSSA-Stanton) must be prepared to react in a calm, efficient manner to ensure the safety of clients, staff and the public is protected in the event of a fire emergency.

DEFINITIONS:

AED – Automatic External Defibrillator

EMS – Emergency Medical Services

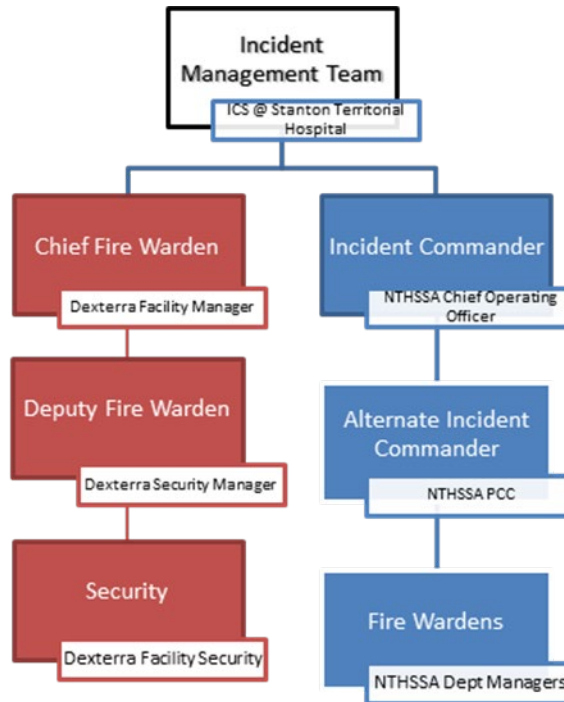
EVACUATION - The relocation of patients, staff and visitors either horizontally or vertically from a dangerous or potentially dangerous area to an area of safety.

FIRE COMPARTMENT - A unit or area which is protected by a fire door and a minimum 1-hour fire separation.

INCIDENT COMMAND CENTER (ICC) - The Incidence Management Team (IMT) will convene at the ICC when ordered by the Incident Commander. The primary location is the Conference Room (2800) or Emergency Operations Center (EOC) in Administration on Level 2. Should the primary location become untenable, the secondary location is at Center Ice Plaza on Level 2, in the Large Boardroom.

INCIDENT COMMAND SYSTEM (ICS) - The Incident Command System (ICS) delineates the roles and responsibilities of those managing a Code Red incident. (Refer to Appendix A of this procedure). The Incident Command System (ICS) will be used to manage internal incidents including Code Red. The ICS consists of two primary components; the Incident Management Team (IMT) responsible for overall command of the incident and all actions for controlling the incident, and the Incident Command Center (ICC) where the Incident Command Team is located during an incident.

INCIDENT MANAGMENT TEAM (IMT) - The IMT is responsible for managing an incident once it has been confirmed or other conditions trigger the need for an evacuation or command center (Code Green). The following table identifies the IMT for a Code Red.



MUSTER STATION - An area where each department or unit's staff can gather in an emergency. Muster stations are located inside of the building.

ZONE - An area of a building designated as part of a fire alarm system or sprinkler system.

Disclaimer Message: This is a **CONTROLLED** document for internal use only. Any documents appearing in paper form are not controlled and should be checked against the electronic file version prior to use.

SCOPE/APPLICABILITY:

This procedure applies to all staff in every area of the hospital. It details the responsibilities of staff members and Dexterra (Stanton Facilities Management Services provider), as well as the steps to be taken should a fire alarm be activated, or an actual fire occur.

PROCEDURE:

WHEN A FIRE IS DISCOVERED (R-E-A-C-T)

1. **R** Remove patients or visitors from immediate area.
2. **E** Ensure all doors are closed.
3. **A** Activate alarm.
4. **C** Clear hallways of any obstacles
5. **I** Try to extinguish fire if safe to do so.

ACTIVATION OF ALARM

The activation of a pull station, smoke detector, heat detector, beam detector, sprinkler system or fire suppression system initiates the 1st stage alarm throughout the facility. The initial alarm will automatically change to a stage 2 alarm after 5 minutes. This tone change is only to continue awareness that the Code Red has not cleared and does not signify any additional response requirement. All Code Red activation or clearance will be announced overhead by the Deputy Fire Warden, Chief Fire Warden or Fire Chief.

When the fire alarm is activated an automatic notification is sent to the Yellowknife Fire Department.

- The audible alarm will sound at the stage 1 rate thorough out the hospital
- The Fire Department / Monitoring Agency Alarm Relay will activate.
- The electronically held-open fire doors will close.
- Strobe lights will activate.
- A fire alarm activated from within a patient room will illuminate all three red dome lights in the corridor outside the patient room.
- All overhead paging will be disabled for the duration of the alarm activation.
- To page overhead in the case of a Code Blue, call the Main Security Desk in Emergency **292-1184** who will page the Code Blue overhead using the red phone at the Central Annunciator Command Facility (CACF).

WHEN YOU HEAR A FIRE ALARM OR CODE RED IS PAGED

- Location of the fire will be announced overhead by Security after one minute of the alarm.
- All staff shall report immediately to their home unit's Primary Muster Station. Float nurses shall report to the unit they have been scheduled to work.
 - Staff are not to go to their locker or office before reporting to the unit's Primary Muster Station.
 - If you are unable to report to your unit's Primary Muster Station due to fire, proceed to the Secondary Muster Station as identified in the Code Green Facility SOP.
 - If you are unable to leave your current area due to the proximity of the fire, muster in place.
- Staff returning to home units to assist with Code Red response roles must use stairwells to gain access to other levels, where access cards will be required to gain entry.
- Elevators are programmed to remain active during fire alarms; however, must only be used when directed by the Yellowknife Fire Department:
 - Elevators are programmed to shut down if smoke is detected in the immediate area.
- All stairwells are available for visitor and members of the public to exit the building on Level 1 only. Re-entry to other levels is only possible with an access card.
- Confine patients and visitors to patients' rooms, exam rooms, patient lounges, or waiting and activity areas. Do not relocate patients to staff muster points.
- Close doors and clear hallways of any obstacles.
- Assure patients and visitors of their safety.
- Avoid using phones since they may be required for emergency contact.
- Review the planned evacuation route and contingency options.
- Wait at Primary Muster Station for further instruction from the overhead paging system.

FIRE ALARM AND CODE RED ACTIVATION DURING REGULAR BUSINESS HOURS (WEEKDAYS 0730-1700hrs EXCLUDING STATUTORY HOLIDAYS)

- Dexterra Security personnel on site will proceed to the Central Annunciator Command Facility (CACF), confirm location, announce fire location on overhead paging system, and direct Fire Department to alarm site.

- The Chief Fire Warden (CFW) and Deputy Fire Warden (or designate / On Duty Engineer) will respond to the location of the alarm and assist as required to ensure the safety of patients and staff.
- The Patient Care Coordinator (PCC) and Senior Manager (SM), (or designate) will respond to the location of the alarm. They will assist as required to ensure the safety of patients and staff.
- The PCC and SM will notify the COO of the situation and the CFW will notify the YK Fire Chief of the situation. Together, the COO and CFW will decide whether to proceed to a hospital evacuation (Code Green).
- All other staff report to their Muster Stations and await direction from overhead page.

FIRE ALARM ACTIVATION DURING NON-BUSINESS AND HOLIDAY HOURS

- Dexterra Security personnel on site will proceed to the Central Annunciator Command Facility (CACF), confirm location and announce fire location on overhead paging system and wait for the arrival of the YK Fire Department.
- After hours, the on-duty Engineer will respond to the fire location until the Chief or Deputy Fire Warden arrives on site and reports situation to Dexterra Security personnel.
- The PCC will respond to the location of the alarm and assist as required to ensure the safety of patients and staff.
- The PCC will determine if there is an immediate need to evacuate and notify Dexterra Security, the Stanton Senior Management Team and/or Stanton Facility Services on-call.
 - If it is anticipated that evacuation (Code Green) may be required, the PCC will activate the ICS and all team members will convene at the ICC location. In the event the primary ICC is compromised the secondary or off-site location will be activated.
- Dexterra Security Guard stationed in the security office will notify the Chief Fire Warden, and the Deputy Fire Warden.
- The PCC will activate the Stanton Hospital staff call back as required. Staff will proceed to the fire alarm site and assist as directed by the PCC to ensure the safety of patients and staff.

- The PCC has overall administrative responsibility until the COO (or designate) arrives and is to contact the COO or designate to apprise him/her of any incidents that are not false alarms.

SPECIAL DEPARTMENTAL PROCEDURES

All areas and individuals must follow the general fire procedures (above). The following special duties are in addition to the general procedures. Please remember if the fire is not in your area, you are to close all the doors and wait for further instructions. If the fire is in your area or if you have been given evacuation instructions, the following procedures apply:

Department	Responsibility	Action Plan
Administration		<ul style="list-style-type: none"> • Check hallway and surrounding area for patients and visitors, and request they muster with Administration
Ambulatory Care Clinic	Safety	<ul style="list-style-type: none"> • Clinical Coordinator (or designate) to check the Fire Alarm Annunciator Panel • Keep patients/visitors in the exam rooms and waiting rooms; do not relocate patients at this stage
Cafeteria	Patient Movement Safety	<ul style="list-style-type: none"> • Check Sacred Space, cafeteria and surrounding public areas for patients and visitors, and request they muster in the Dining Hall
Chemotherapy	Patient Movement Safety	<ul style="list-style-type: none"> • Clinical Coordinator (or designate) to check the Fire Alarm Annunciator Panel • Perform a patient/visitor count for the unit • Confirm location of transport equipment if needed (IV pumps)
Day Procedures	Patient Movement	<ul style="list-style-type: none"> • Clinical Coordinator (or designate) to check the Fire Alarm Annunciator Panel • Perform a patient/visitor count for the unit • Confirm location of transport equipment if needed (IV pumps) • Consider saline locks for patients

Disclaimer Message: This is a **CONTROLLED** document for internal use only. Any documents appearing in paper form are not controlled and should be checked against the electronic file version prior to use.

Department	Responsibility	Action Plan
Diagnostic Imaging		<ul style="list-style-type: none"> Keep/move patients/visitors to the waiting rooms
Dialysis	Patient Movement Safety	<ul style="list-style-type: none"> Clinical Coordinator (or designate) to check the Fire Alarm Annunciator Panel Perform a patient/visitor count for the unit Confirm location of transport equipment if needed (IV pumps) Plan for potential move of Dialysis machines
Emergency Department	Safety Patient Transport	<ul style="list-style-type: none"> Clinical Coordinator (or designate) to check the Fire Alarm Annunciator Panel; communicate to mustered staff in Emergency and ICU Perform a patient/visitor count for the unit Confirm requirements for gas shut off Pre-position transport equipment Review the planned evacuation route to avoid EMS traffic Ensure availability of portable gases Consider staffing needs for ill, injured or behavioral health patients Confirm need to close Isolation Rooms
Extended Care		<ul style="list-style-type: none"> Clinical Coordinator (or designate) to check the Fire Alarm Annunciator Panel Perform a patient/visitor count for the unit
Facility Services (Stanton)	Evacuate Basement / Assist in building shut down	<ul style="list-style-type: none"> Check morgue for visitors, and request visitors to muster in place Check staff locker rooms for staff members Assist Dexterra with shut down of gases as directed

Disclaimer Message: This is a **CONTROLLED** document for internal use only. Any documents appearing in paper form are not controlled and should be checked against the electronic file version prior to use.

Department	Responsibility	Action Plan
		<ul style="list-style-type: none"> Plan for provision of portable gases to units
Housekeeping		<ul style="list-style-type: none"> Housekeeping staff that are assigned to a unit muster with that unit Housekeeping staff that are not assigned to a unit are to return to the Kitchen (Level 0)
ICU	Safety Patient Transport	<ul style="list-style-type: none"> Confirm requirements for gas shut off Perform a patient/visitor count for the unit Pre-position transport equipment (vents, monitors, stretchers) Review the planned evacuation route with most ill and injured to ED Ensure availability of portable gases Plan move of critical carts / AED / defibrillators Consider staffing needs for ill, injured or vented patient Confirm need to close Isolation Rooms
Inpatient Rehab		<ul style="list-style-type: none"> Supervisor (or designate) to check the Fire Alarm Annunciator Panel Perform a patient/visitor count for the unit
Kitchens (Level 0 and 1)	Safety	<ul style="list-style-type: none"> Confirm need to turn off Fryers / Ovens / Heat Sources
Lab	Safety Patient Transport Security	<ul style="list-style-type: none"> Patients in Outpatient Collection Cubicles shall be returned to the Diagnostic Services waiting area Biological Safety Cabinets should have all specimens and materials left inside and the sash closed Consider additional requirements for escalation to Code Green (Blood Bank and POCT)
Laundry	Safety	<ul style="list-style-type: none"> Shut down washers and dryers

Disclaimer Message: This is a **CONTROLLED** document for internal use only. Any documents appearing in paper form are not controlled and should be checked against the electronic file version prior to use.

Department	Responsibility	Action Plan
Materials Management	Safety	<ul style="list-style-type: none"> Secure warehouse prior to departure
MDR	Safety	<ul style="list-style-type: none"> Confirm need to turn off gases and equipment
Medicine		<ul style="list-style-type: none"> Clinical Coordinator (or designate) to check the Fire Alarm Annunciator Panel Perform a patient/visitor count for the unit Confirm requirements for gas shut off Pre-position transport equipment (monitors, stretchers) Ensure availability of portable gases Plan move of critical carts / AED / defibrillators
Obstetrics		<ul style="list-style-type: none"> Clinical Coordinator (or designate) to check the Fire Alarm Annunciator Panel (located Peds) Perform a patient/visitor count for the unit Review the planned evacuation route; in the event of evacuation, active labour patients to be routed to Operating Room Prepare to receive intubated patients from OR <p>Note: OR and L&D have additional fire breaks</p>
Operating and Post Anesthetic Recovery Rooms	Safety Patient Transport	<ul style="list-style-type: none"> Clinical Coordinator (or designate) to check the Fire Alarm Annunciator Panel Perform a patient/visitor count for the unit Confirm requirements for gas shut off Pre-position transport equipment (vents, monitors, stretchers) Review the planned evacuation route; in the event of evacuation,

Disclaimer Message: This is a **CONTROLLED** document for internal use only. Any documents appearing in paper form are not controlled and should be checked against the electronic file version prior to use.

Department	Responsibility	Action Plan
		intubated patients to be routed to L&D Suites <ul style="list-style-type: none"> • Check availability of portable gases and prepare for transport • Plan move of critical carts / AED / defibrillators • Consider staffing needs for vented patient • Prepare to receive active labour patients from OBS Note: OR and L&D have additional fire breaks
Pediatrics		<ul style="list-style-type: none"> • Clinical Coordinator (or designate) to check the Fire Alarm Annunciator Panel • Perform a patient/visitor count for the unit • Confirm requirements for gas shut off • Pre-position transport equipment (monitors, stretchers) • Ensure availability of portable gases • Plan move of critical carts / AED / defibrillators
Pharmacy	Security	<ul style="list-style-type: none"> • Secure Pharmacy and Narcotics • Prepare to take Narcotic log book in the event of an evacuation • Assess and determine if Primary Engineering Controls can be turned off for: <ul style="list-style-type: none"> ○ Laminar Flow Hood ○ Biological Safety Cabinet
Psychiatry		<ul style="list-style-type: none"> • Clinical Coordinator (or designate) to check the Fire Alarm Annunciator Panel • Perform a patient/visitor count for the unit • If Seclusion Room(s) are in use, have a Behavioural Health Worker designated at the door

Disclaimer Message: This is a **CONTROLLED** document for internal use only. Any documents appearing in paper form are not controlled and should be checked against the electronic file version prior to use.

Department	Responsibility	Action Plan
Registration		<ul style="list-style-type: none"> • Supervisor (or designate) to check the Fire Alarm Annunciator Panel • Perform a patient/visitor count for the area • Check public bathrooms and request patients and visitors to muster in the Front Entrance Waiting Area • If applicable, request Gift Shop attendant to muster with patients and visitors <p>Note: Registration staff at Triage muster with Emergency Department</p>
Security (Dexterra)	Safety and Security of Evacuation Routes	<ul style="list-style-type: none"> • Instruct members of the public that they cannot enter the building • Ensure all evacuation points remain clear of debris, snow or objects • Ensure safety equipment is located at all evacuation points. • Place traffic barriers as required
Surgery		<ul style="list-style-type: none"> • Clinical Coordinator (or designate) to check the Fire Alarm Annunciator Panel • Perform a patient/visitor count for the unit • Confirm requirements for gas shut off • Pre-position transport equipment (monitors, stretchers) • Ensure availability of portable gases • Plan move of critical carts / AED / defibrillators

EVACUATION

In all instances of evacuation, **please refer to the Code Green Evacuation Procedure**. The evacuation locations in the Code Green Procedure are to be used if the fire is in your area or if you have been given evacuation instructions.

Disclaimer Message: This is a **CONTROLLED** document for internal use only. Any documents appearing in paper form are not controlled and should be checked against the electronic file version prior to use.

MUSTER STATIONS

Level	Department	Primary Muster Station
0	Health Records Storage	Main Health Records work area
	FM - Dexterra Office	FM Dexterra Office
	Laundry	FM Dexterra Office
	Kitchen	FM Dexterra Office
	Facility Services	Facilities Services Workspace
	MDR	MDR Clean Side Workspace
	Biomedical Engineering	Main Biomedical Workspace
	Materials Management	Level 0 Staff Room
1	Intensive Care Unit (ICU)	Central Nursing Desk
	Emergency	Central Nursing Desk
	Respiratory Therapy	ICU Central Nursing Desk
	Laboratory	Main Lab work area
	Diagnostic Imaging	Diagnostic Services Waiting Room
	Outpatient Lab	Diagnostic Services Waiting Room
	Cafeteria and surrounding public area	Dining Hall
	Indigenous Wellness Program	Reception Lounge
	Registration	Main Reception Lounge
	Ambulatory Care Centre (ACC)	ACC Waiting Room Hallway
	Chemo/IV Therapy	Main Nursing Desk
	Dialysis	Main Nursing Desk
	Pharmacy	Receiving Area
2	Administration - Operational Support Area	Conference Room 2805
	Computer Services	Classroom
	CHIRP Coordinator	Classroom
	Health Records	Main Health Records work area
	Transcriptionists	Main Health Records work area
	Staff Development	Classroom
	Stanton Foundation	Conference Room 2805
	Transitional Care Planning Team	Classroom
	Obstetrics	L&D Nursing Station
	OR/PARR	PARR Hallway
	Day Procedures/Endoscopy	Main Nursing Work Station
	Pediatrics	Peds Main Nursing Work Station
3	In-Patient Rehab	Rehab Gym
	Psychiatry	Conference Room / Work Station

Disclaimer Message: This is a **CONTROLLED** document for internal use only. Any documents appearing in paper form are not controlled and should be checked against the electronic file version prior to use.

Level	Department	Primary Muster Station
4	Medicine South	Secondary Work Station
	Medicine North	Secondary Work Station
5	Surgery	Secondary Work Station
	Extended Care	Secondary Work Station

FIRE AND SMOKE ALERTING AND PROTECTION SYSTEM

The Stanton Territorial Hospital is equipped with a fire and smoke alerting system for the protection of life and property. The following is a brief description of the devices and functions of the system. A detailed description is available in the document, Fire Safety Plan for Stanton Territorial Hospital, National Fire and Safety Planners/Bird Construction, October 17, 2018

ALARM PULL STATIONS

The Alarm Pull Stations are located throughout the hospital accessible to all departments and nursing units. If the pull station arm is moved into the down position, it will activate the fire alarms. All staff must be familiar with the location of the pull stations in their work area. **See Fire Safety Plan Diagrams.**

If the fire prevents activation of the nearest pull station, you must wait at the pull station you have activated to redirect fire response teams to the correct area.

FIRE PHONES

Fire Phones are located at the entrance to every stairwell. These are for use by the YK Fire Department only. **See Fire Safety Plan Diagrams**
























FIRE EXTINGUISHERS

Fire extinguishers are located throughout the hospital and all staff must be familiar with their location and how to use them in the case of fire. **See Fire Safety Plan Diagrams**

FIRE ALARM

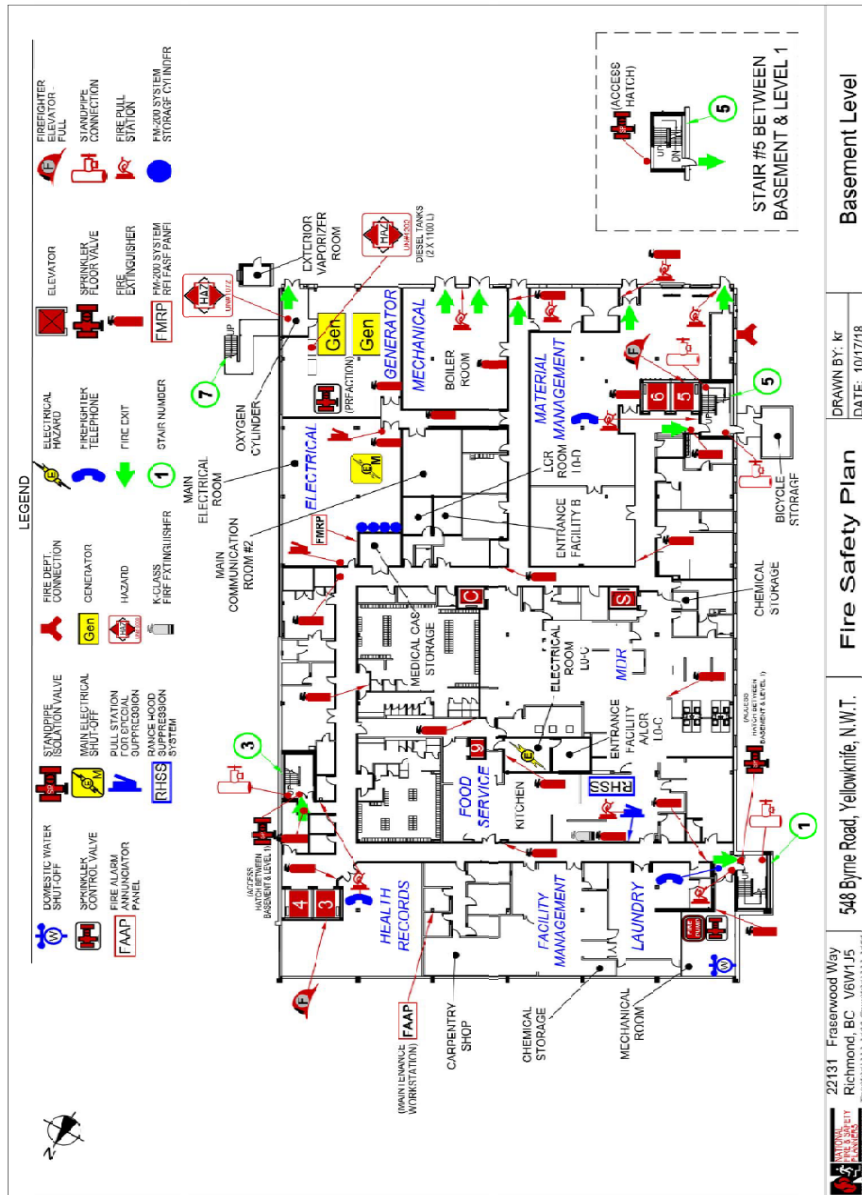
The hospital has a 2-stage alarm system. The initial alarm will automatically change to a stage 2 alarm after 5 minutes. This tone change is only to continue awareness that the Code Red has not cleared and **does not signify any additional response requirement**. All Code Red activation or clearance will be announced overhead by the Deputy Fire Warden, Chief Fire Warden or Fire Chief.

FIRE SAFETY PLAN DIAGRAMS

LEGEND					
 DOMESTIC WATER SHUT-OFF	 STANDPIPE ISOLATION VALVE	 FIRE DEPT. CONNECTION	 ELECTRICAL HAZARD	 ELEVATOR	 FIREFIGHTER ELEVATOR - FULL
 SPRINKLER CONTROL VALVE	 MAIN ELECTRICAL SHUT-OFF	 GENERATOR	 FIREFIGHTER TELEPHONE	 SPRINKLER FLOOR VALVE	 STANDPIPE CONNECTION
 FIRE ALARM ANNUNCIATOR PANEL	 PULL STATION FOR SPECIAL SUPPRESSION	 HAZARD	 FIRE EXIT	 FIRE EXTINGUISHER	 FIRE PULL STATION
 RHSS RANGE HOOD SUPPRESSION SYSTEM		 K-CLASS FIRE EXTINGUISHER	 STAIR NUMBER	 FMRP FM-200 SYSTEM RFI FASE PANEL	 FM-200 SYSTEM STORAGE CYLINDER

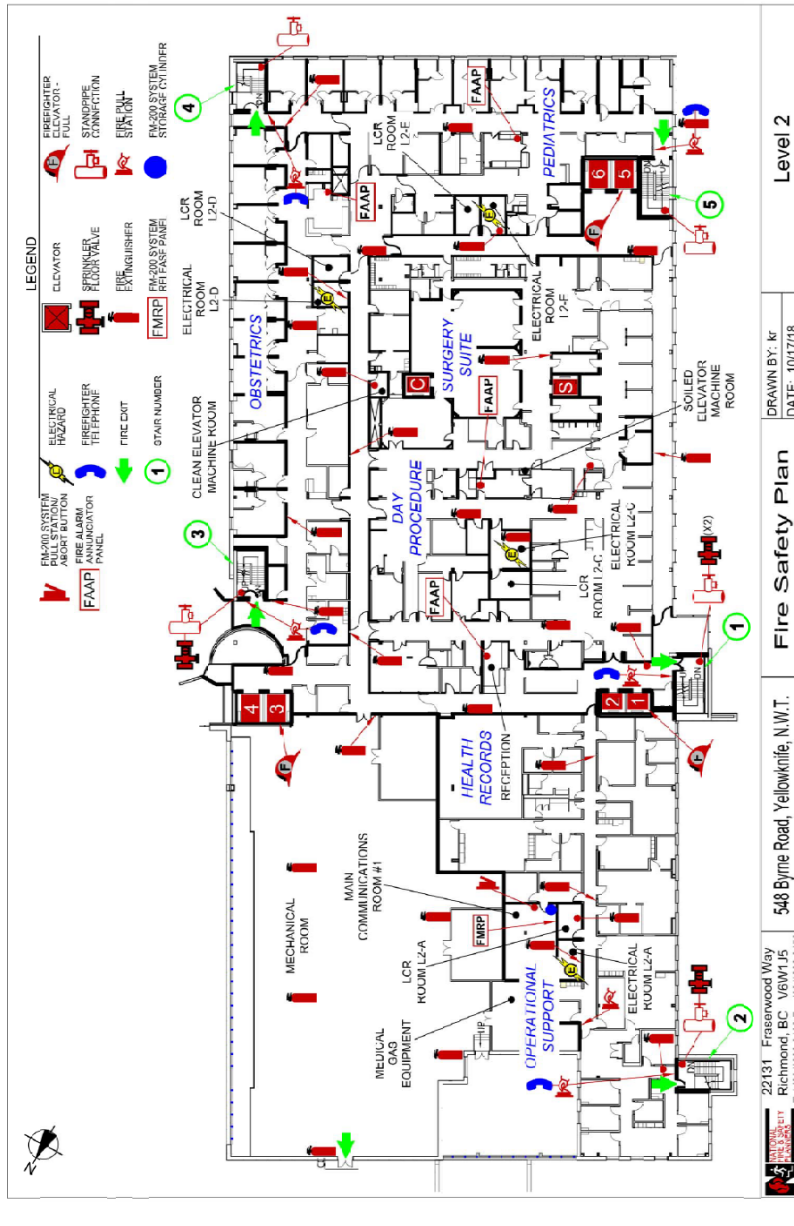
Disclaimer Message: This is a **CONTROLLED** document for internal use only. Any documents appearing in paper form are not controlled and should be checked against the electronic file version prior to use.

LEVEL 0



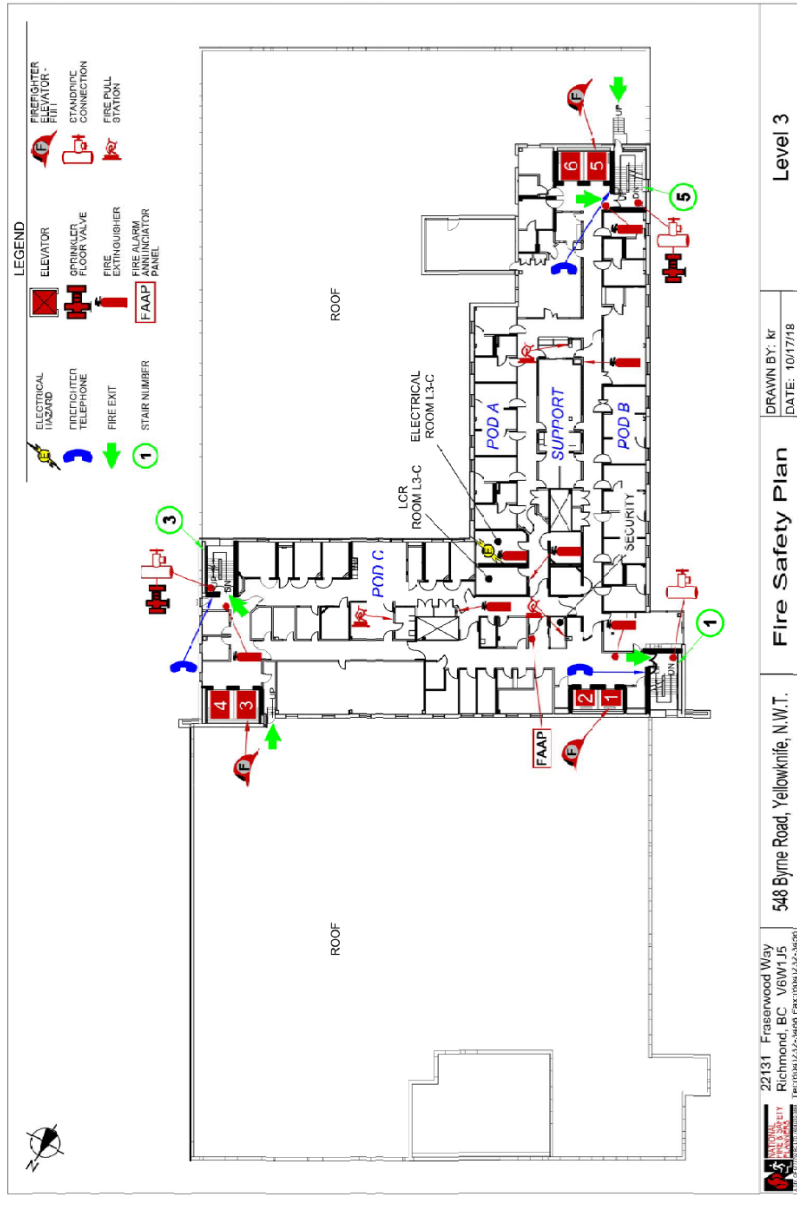
Disclaimer Message: This is a **CONTROLLED** document for internal use only. Any documents appearing in paper form are not controlled and should be checked against the electronic file version prior to use.

LEVEL 2



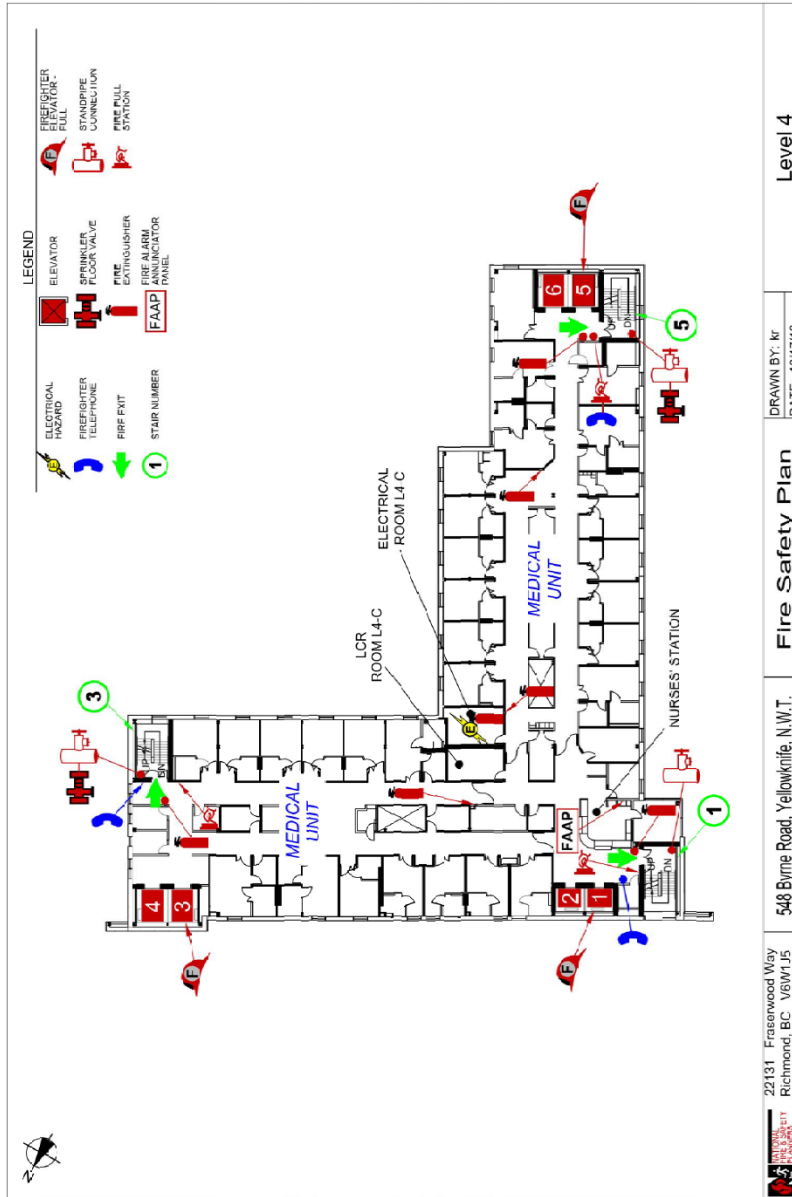
Disclaimer Message: This is a **CONTROLLED** document for internal use only. Any documents appearing in paper form are not controlled and should be checked against the electronic file version prior to use.

LEVEL 3



Disclaimer Message: This is a **CONTROLLED** document for internal use only. Any documents appearing in paper form are not controlled and should be checked against the electronic file version prior to use.

LEVEL 4



22131 - Fraserwood Way
 Richmond, BC V6W1J5
 Tel: (604) 273-3468 Fax: (604) 273-3490

548 Byme Road, Yellowknife, N.W.T.

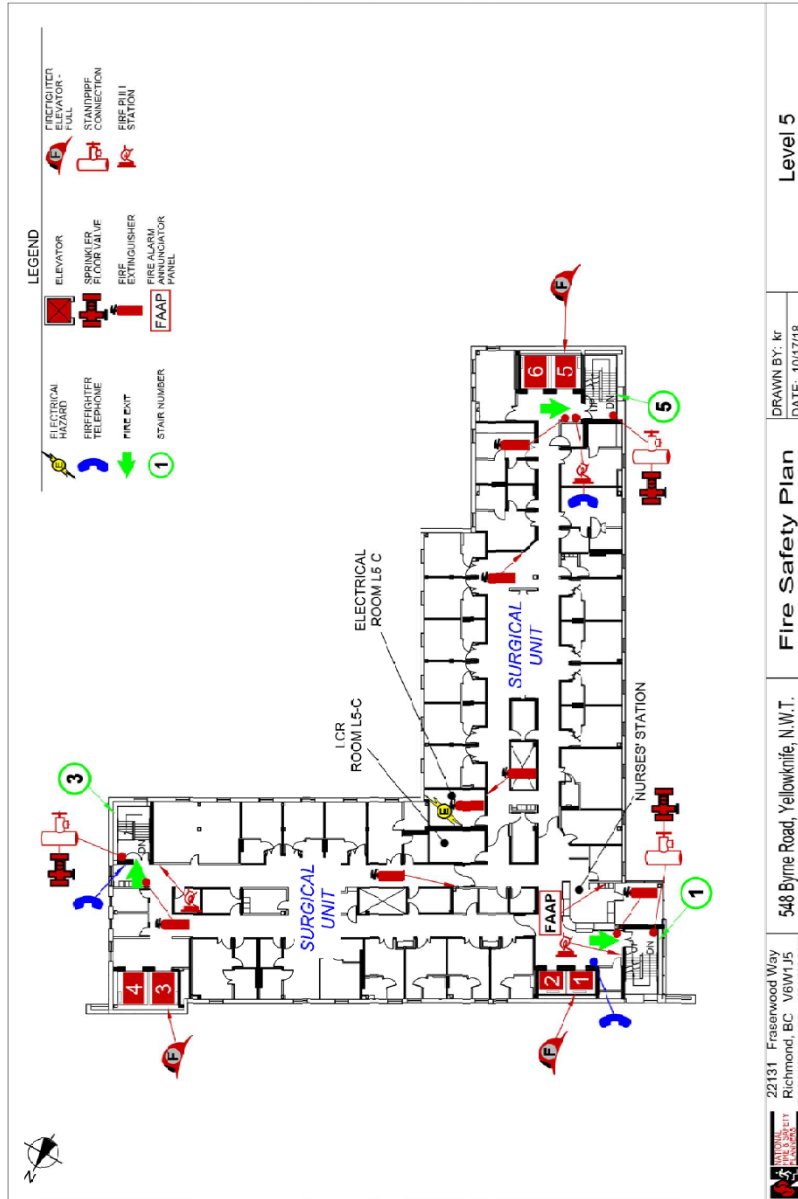
Level 4

Fire Safety Plan

Drawn By: NF
 Date: 10/17/18

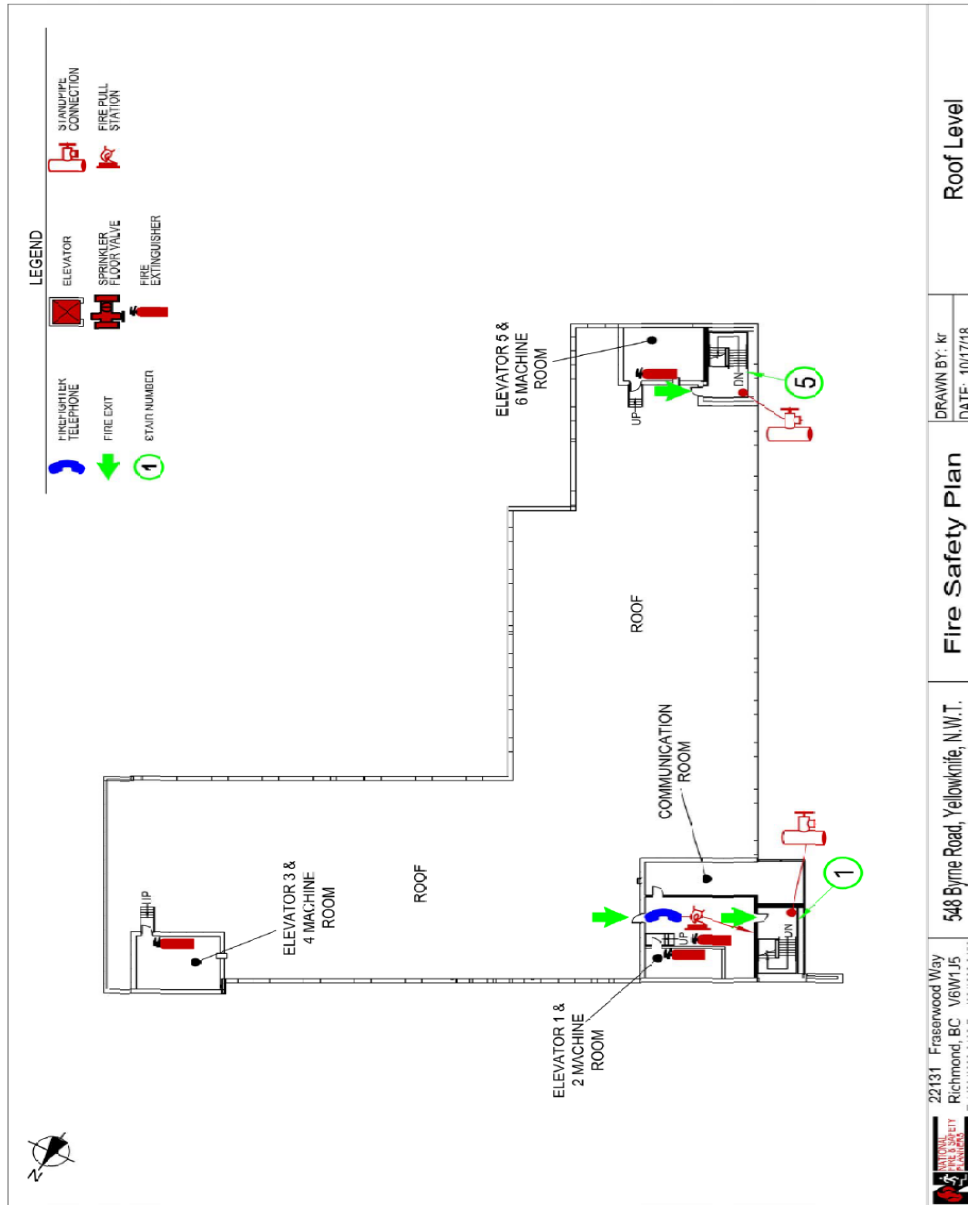
Disclaimer Message: This is a **CONTROLLED** document for internal use only. Any documents appearing in paper form are not controlled and should be checked against the electronic file version prior to use.

LEVEL 5



Disclaimer Message: This is a **CONTROLLED** document for internal use only. Any documents appearing in paper form are not controlled and should be checked against the electronic file version prior to use.

ROOF LEVEL



Disclaimer Message: This is a **CONTROLLED** document for internal use only. Any documents appearing in paper form are not controlled and should be checked against the electronic file version prior to use.

PERFORMANCE MEASURES:

These procedures will be tested in accordance with the Fire Safety Plan (2018 or most recent version) to ensure each staff member understands what to do in the event of a fire.

CROSS-REFERENCES:

NA

ATTACHMENTS:

Appendix A – CODE RED ALGORITHM

REFERENCES:

- National Fire Code Canada 2015
- City of Yellowknife Emergency Measures Plan – City of Yellowknife. Version 2016
- Fire Safety Plan for Stanton Territorial Hospital - National Fire and Safety Planners. Version 17 October 2018
- NTHSSA-Stanton Code Green Procedure

APPROVAL:



Date

June 16, 2021

NTHSSA CEO

June 18, 2021

Date



Stanton Territorial Hospital COO

APPENDIX A – CODE RED ALGORITHM

