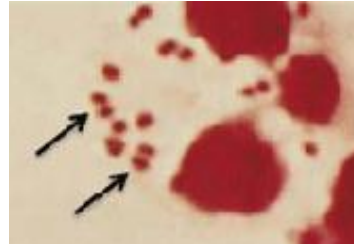
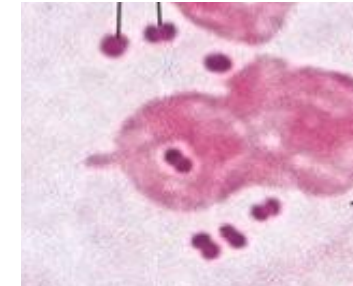


Uncontrolled When Printed

Neisseria meningitidis from sterile sites must be sent to APL immediately after identification is confirmed. Assure there is a purity plate made that can be used for this purpose



Gram-negative Cocci,
Aerobic



Oxidase POS/
Catalase POS

Growth on BA?

All workup on GNC from sterile/invasive sites should be performed in the BSC

Colonies typical of
Neisseria meningitidis



Colonies typical of
Moraxella catarrhalis



Colonies typical of
Neisseria gonorrhoeae



NH ID Card

Sterile site?

API NH AND NH ID Card

If from sterile site:

- Call ordering location
- Call and copy report to HPU1
- Copy report to IPAC
- Forward isolate to APL for susceptibility
- Forward to NML for typing

Organism ID:
Neisseria meningitidis

YES
NH ID Card

NO
MCAT Disk

- Copy report to HPU1
- Forward isolate to APL for susceptibility

Organism ID:
Neisseria gonorrhoeae

NOTE: This is a CONTROLLED document for internal use only. Any documents appearing in paper form are not controlled and should be checked against electronic version prior to use.