

Chart 1: S. pneumoniae - CSF/CSF Shunt, Brain, Deep Eye

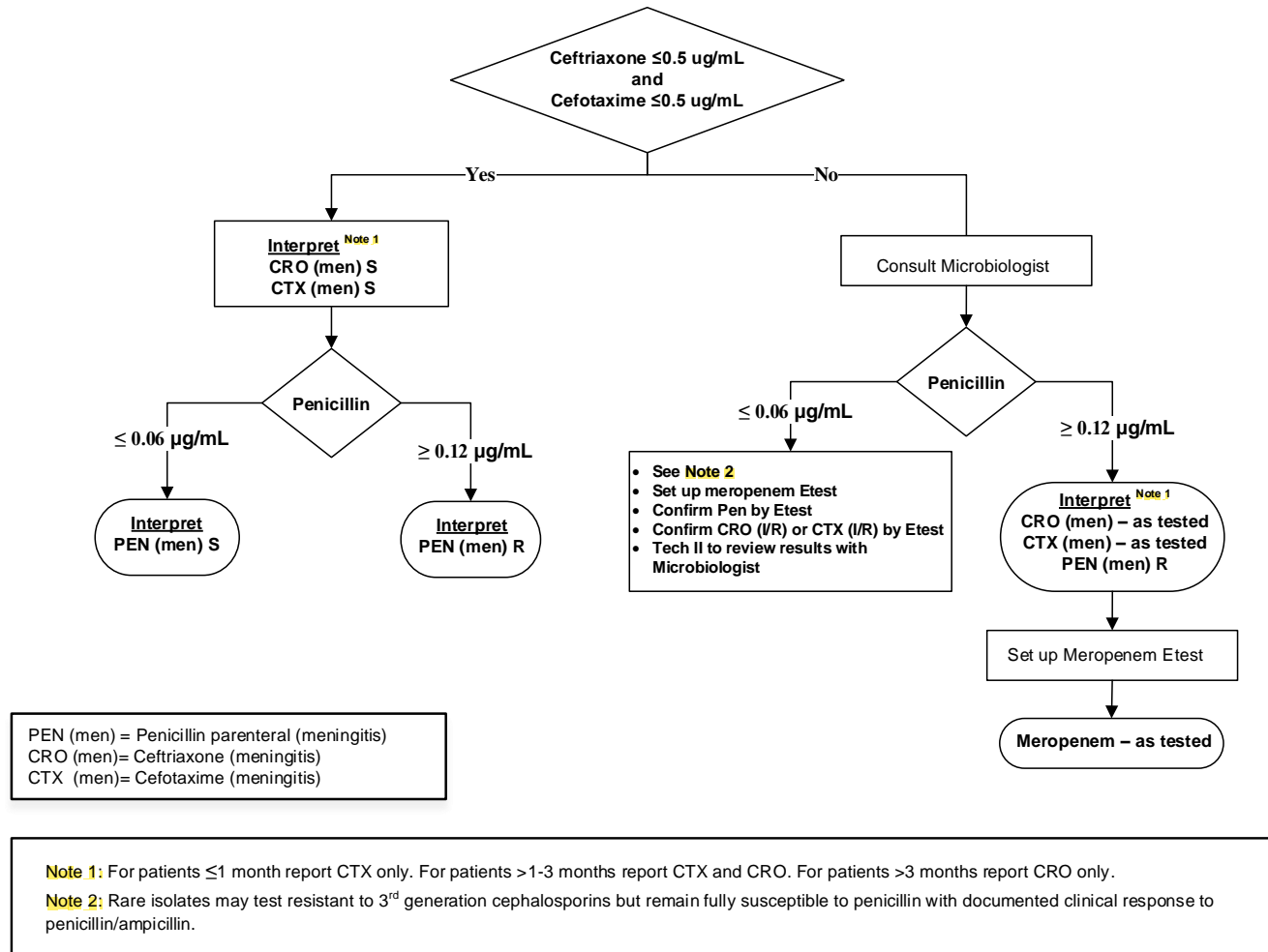
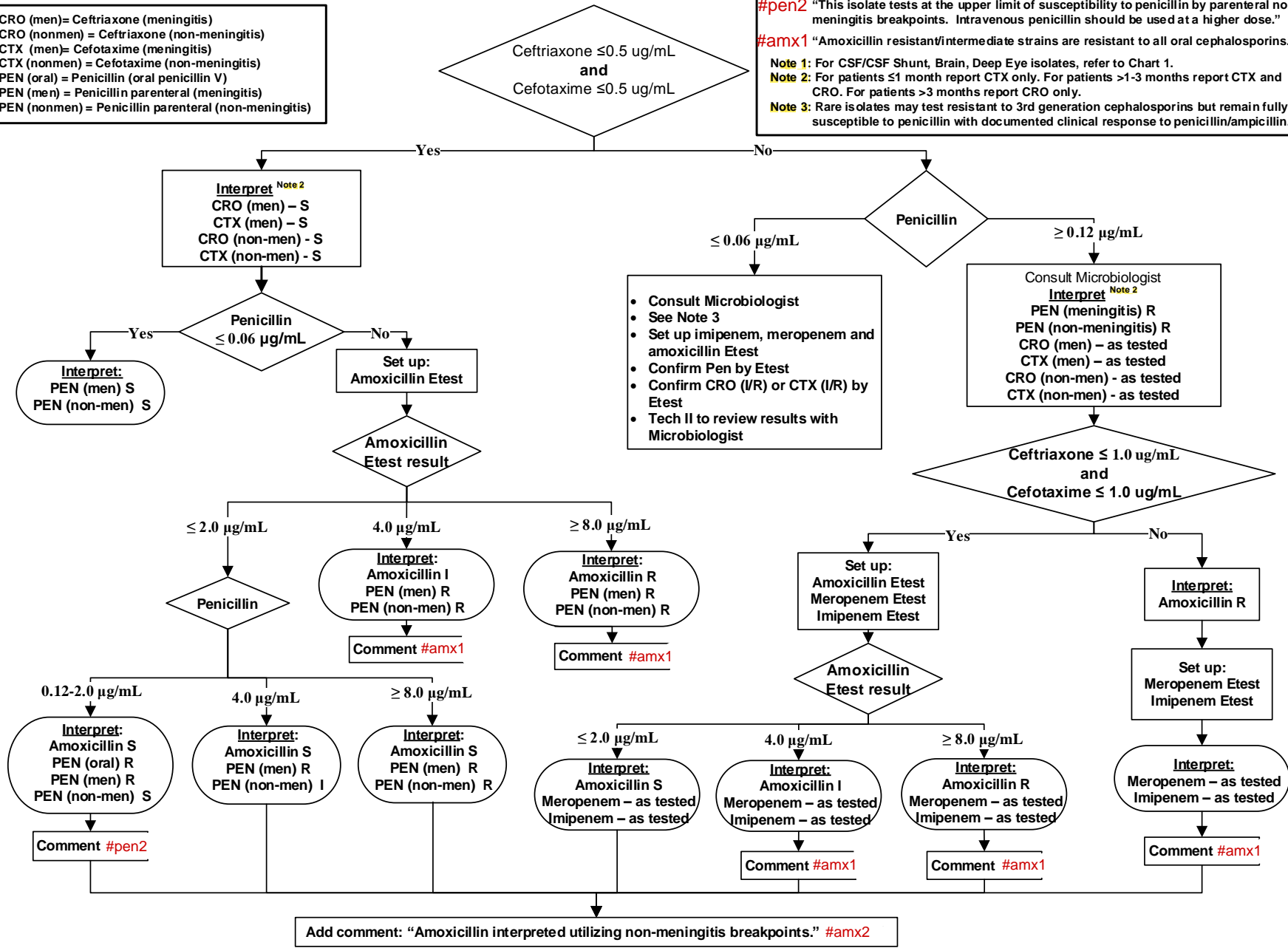


Chart 2: *S. pneumoniae* - Blood / Sterile Body Sites Note 1

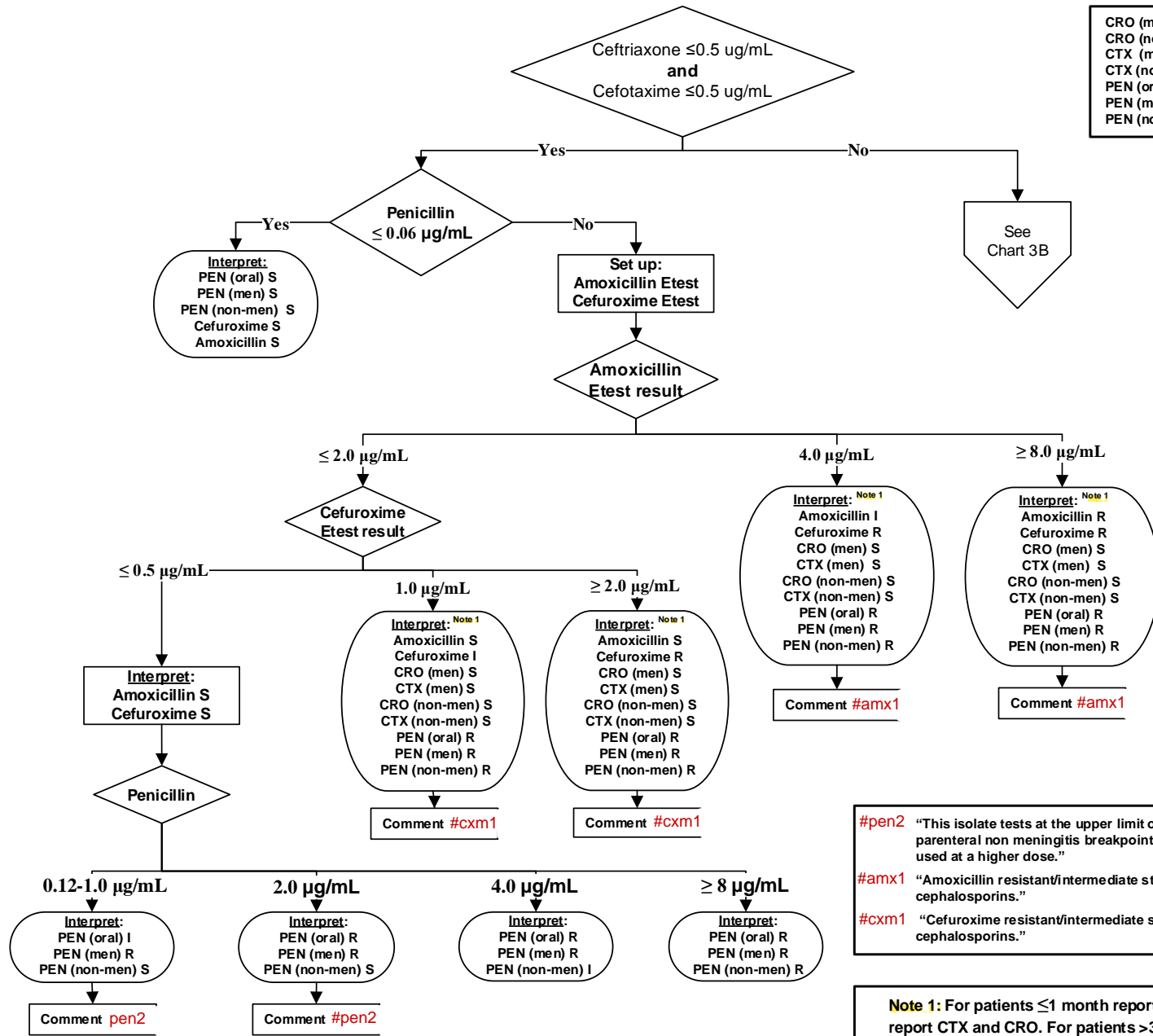
CRO (men)= Ceftriaxone (meningitis)  
 CRO (nonmen) = Ceftriaxone (non-meningitis)  
 CTX (men)= Cefotaxime (meningitis)  
 CTX (nonmen) = Cefotaxime (non-meningitis)  
 PEN (oral) = Penicillin (oral penicillin V)  
 PEN (men) = Penicillin parenteral (meningitis)  
 PEN (nonmen) = Penicillin parenteral (non-meningitis)

#pen2 "This isolate tests at the upper limit of susceptibility to penicillin by parenteral non meningitis breakpoints. Intravenous penicillin should be used at a higher dose."  
 #amx1 "Amoxicillin resistant/intermediate strains are resistant to all oral cephalosporins."  
 Note 1: For CSF/CSF Shunt, Brain, Deep Eye isolates, refer to Chart 1.  
 Note 2: For patients ≤1 month report CTX only. For patients >1-3 months report CTX and CRO. For patients >3 months report CRO only.  
 Note 3: Rare isolates may test resistant to 3rd generation cephalosporins but remain fully susceptible to penicillin with documented clinical response to penicillin/ampicillin.



### Chart 3A: *S. pneumoniae* - Non-Sterile Body Sites

CRO (men)= Ceftriaxone (meningitis)  
 CRO (nonmen) = Ceftriaxone (non-meningitis)  
 CTX (men)= Cefotaxime (meningitis)  
 CTX (nonmen) = Cefotaxime (non-meningitis)  
 PEN (oral) = Penicillin (oral penicillin V)  
 PEN (men) = Penicillin parenteral (meningitis)  
 PEN (nonmen) = Penicillin parenteral (non-meningitis)



#pen2 "This isolate tests at the upper limit of susceptibility to penicillin by parenteral non meningitis breakpoints. Intravenous penicillin should be used at a higher dose."  
 #amx1 "Amoxicillin resistant/intermediate strains are resistant to all oral cephalosporins."  
 #cxm1 "Cefuroxime resistant/intermediate strains are resistant to all oral cephalosporins."

**Note 1:** For patients ≤1 month report CTX only. For patients >1-3 months report CTX and CRO. For patients >3 months report CRO only.

### Chart 3B: *S. pneumoniae* - Non-Sterile Body Sites

