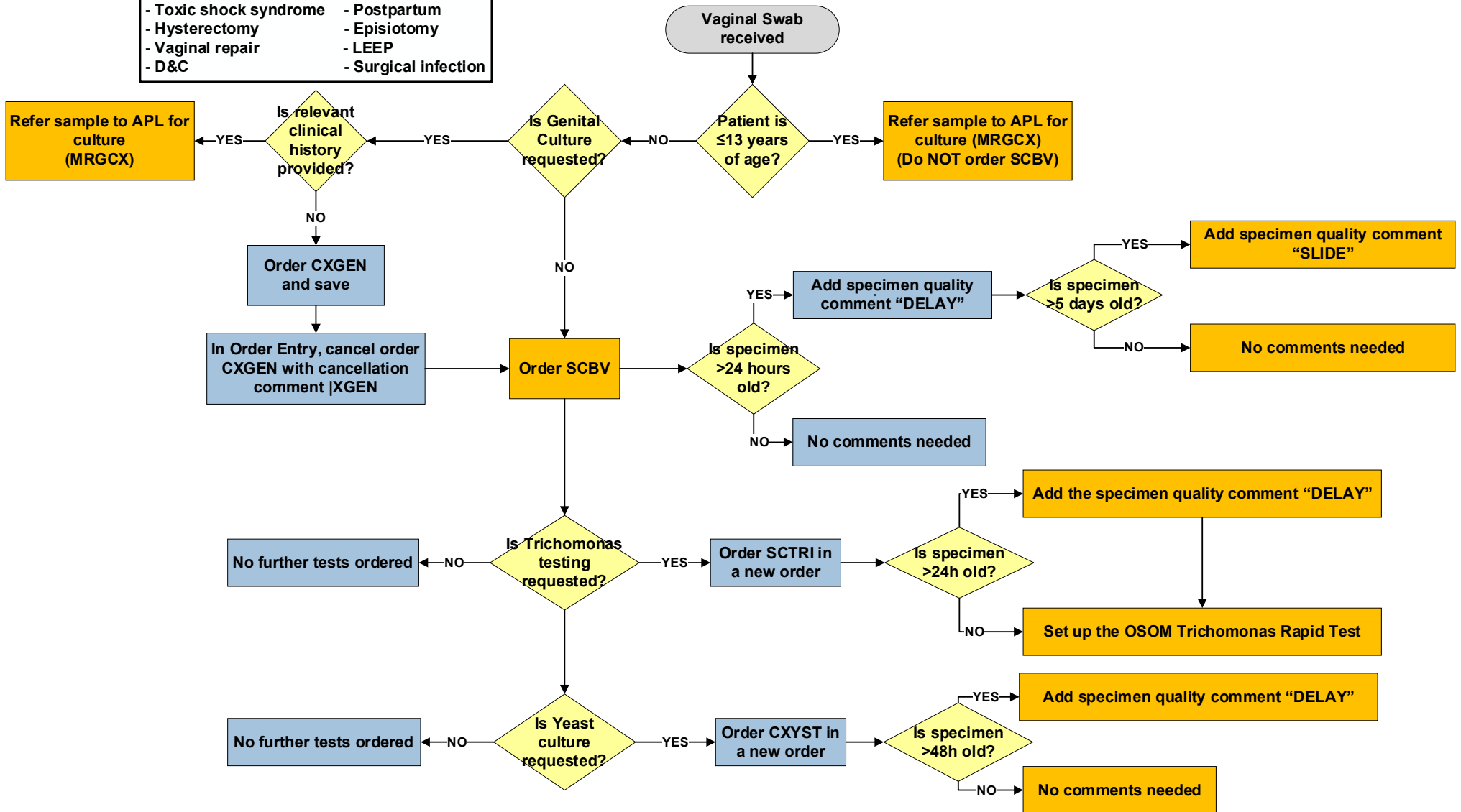




Relevant Clinical History for Genital Culture:

- Toxic shock syndrome
- Hysterectomy
- Vaginal repair
- D&C
- Postpartum
- Episiotomy
- LEEP
- Surgical infection



NOTE: This is a CONTROLLED document for internal use only. Any documents appearing in paper form are not controlled and should be checked against electronic version prior to use.