

PROCEDURE: Spectra™ Strep A**I. PRINCIPLE**

Spectra Strep A agar is a chromogenic media allowing for straight forward color differentiation of Group A *Streptococcus* (GAS) among other bacteria in throat flora present from throat swabs from patients with suspected infections from *Streptococcus pyogenes*. This medium allows for direct identification of GAS from throat swabs in 24 hours. Differentiation from other bacteria is accomplished by targeting organism specific enzymatic reactions through the uptake and cleavage of a chromogenic substrate, resulting in an orange coloring for GAS colonies, where other bacteria are either generally inhibited or appear colorless or blue/green if growth is visible.

II. AVAILABILITY

A. Alternative screen testing for GASPC

III. TEST CODE

A. CXTHR

IV. SPECIMEN

A. Throat swab (eSwab or Copan)

V. MATERIALS

A. Spectra™ Strep A agar

VI. STORAGE

A. Store product in original packaging at 2-8°C protected from light.

VII. QUALITY CONTROL

Positive growth controls	
<i>Streptococcus pyogenes</i> ATCC®19615	Growth with orange colonies, 1-1.5mm
<i>Streptococcus dysgalactiae</i> ATCC®12388	Growth with white/light blue colonies, <1.5mm
<i>Enterococcus faecalis</i> ATCC®29212	Growth with green colonies <2mm
Negative growth control	
<i>Staphylococcus aureus</i> ATCC®25923	No growth

- A. Inoculate saline to 0.5 McF for each control organism to be tested.
- B. Transfer 10µL of suspension to a Spectra Strep A agar for each Positive growth control tested.
- C. Transfer 1mL of suspension to a Spectra Strep A agar for each Negative growth control tested.
- D. Streak inoculum for isolation.

VIII. TEST PROCEDURE

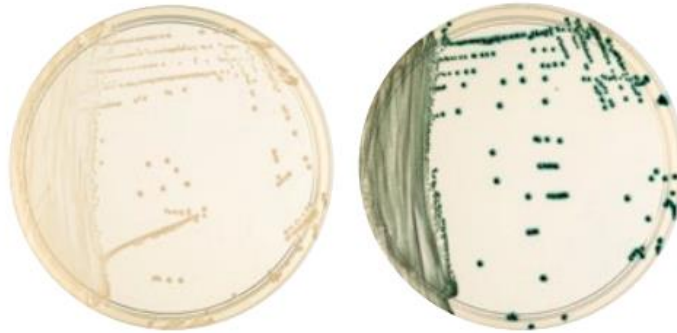
- A. Inoculate and streak specimen as soon as possible after it is received in the laboratory.
- B. Incubate plates at 37°C with 5% CO₂ for 24 hours protected from light.
- C. Observe colony characteristics, morphology, and color reactions after incubation.

IX. INTERPRETATION

- A. Positive for Group A *Streptococcus* – Orange to red colored colonies



- B. Negative for Group A *Streptococcus* – No growth or colonies that appear colorless or blue



X. REPORTING RESULTS

- A. Negative cultures
1. Result Test Comment using available keypad: **“No Group A Strep isolated”**
- B. Positive cultures
1. Result CHROM media using available keypad: **“Orange colored colonies”**
 2. Create new isolate with the following:
 - a. Isolate ID: **strpyo**
 - b. Quantitation: **None**
 - c. Isolate comments: **&NFW – “No Further Workup”**
 3. Final culture and save plate in 7-day hold rack (Respiratory Bench)

XI. LIMITATIONS

- A. The media should be protected from light at all times except during inoculation and after incubation.
- B. Rare *Staphylococci* spp. and *Kocuria* spp. may grow on the media in orange coloration. These organisms can be differentiated by catalase after sub-culturing to BAP.

XII. REFERENCES

- A. Remel Spectra™ Strep A package insert.