



Technical Communication

Interpreting QC Failure on the Galileo Echo™

In order to better assist our customers, Immucor is taking this opportunity to provide additional guidance for interpreting QC failures on the Galileo Echo™.

Test Results



Immucor, Inc. - Norcross, Georgia USA
Instrument ID: None Instrument name: Immucor Echo
Report generated: Tuesday, August 20, 2013 08:11 AM

Test name	Group	Software version	1.4.1.9.0
Operator	shonda22315	Assay version	1.4U
Batch number	3363	Instrument ID	M01146
Profile name	Group	Instrument name	Immucor Echo II

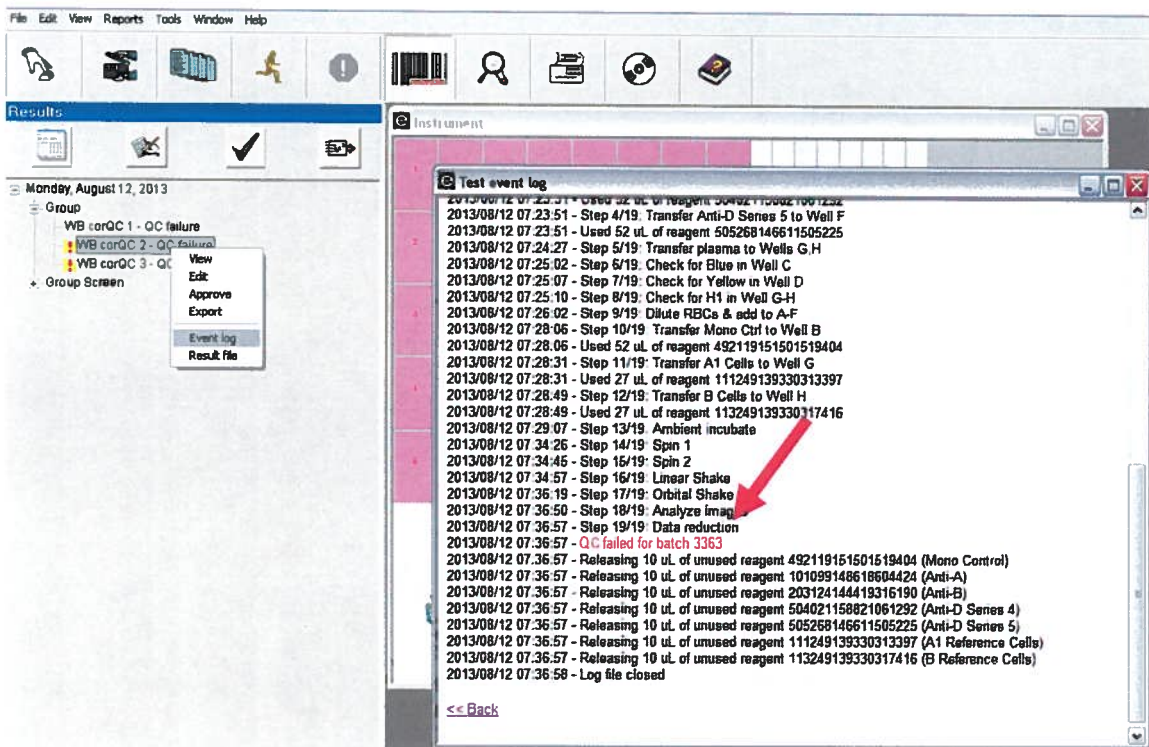
Results - Group

Sample ID	Interp.	Flags	Mono Ctrl	Anti-A	Anti-B	Anti-D1	Anti-D2	A1 Cells	B Cells
233234132080297005 WB corQC 2	QC failure		Q	Q	Q	Q	Q	Q	Q

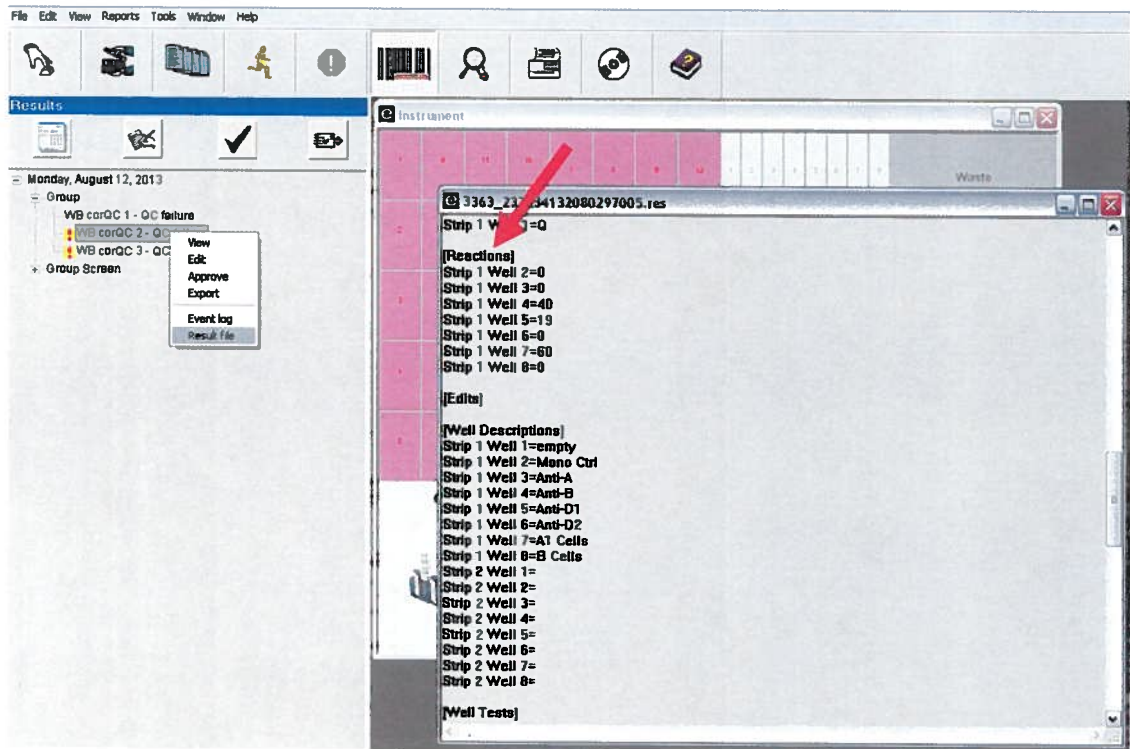
Steps for interpreting QC failure on the Galileo Echo™

1. From the results window on the main instrument page, right click any one of the failed WBcorQC samples and select Event Log. Towards the bottom of the Test event log, verify that the red batch number (failed QC batch) matches the batch number at the top of the Test event log report (scroll up on the Test event log to see this number).

Note: If multiple QC batches are running at the same time and QC fails for a single batch, all other batches running with reagents in common will fail as well. Locating the failed batch number on the event log assures that you are reviewing the QC batch responsible for the QC failure.



2. Once the failed QC batch is located, right click on the failed WBcorQC beginning with WBcorQC 1 and select Result File.
3. Scroll down on the Result File until [Reactions] is displayed.



- Match the reactions with those listed on the charts below for the corresponding assay and determine the well(s) responsible for the QC failure.

Example: Under Reactions in the result file above, Strip 1, Well 5 has a result of 19. According to the Group WBcorQC Reaction Chart, this value is out of range. WBcorQC 2, Well 5 (Anti-D1) should have a result between 0-2.

Note: There may be no reactions listed if the strip was invalid or images were not analyzed by the camera.

- Review the well image on the Test Results Report to assist in determining why QC may have failed.

Test Results



Immucor, Inc. - Norcross, Georgia USA
 Instrument ID: None Instrument name: Immucor Echo
 Report generated: Tuesday, August 20, 2013 08:11 AM

Test name	Group	Software version	1.4.1.9.0
Operator	shonda22315	Assay version	1.4U
Batch number	3363	Instrument ID	M01146
Profile name	Group	Instrument name	Immucor Echo II

Results - Group

Sample ID	Interp.	Flags	Mono Ctrl	Anti-A	Anti-B	Anti-D1	Anti-D2	A1 Cells	B Cells
233234132080297005 WB_corQC 2	QC failure		Q	Q	Q	Q	Q	Q	Q

- Repeat steps 2-5 for each level of WBcorQC to locate or determine additional well(s) responsible for QC failure.

WBcorQC Reaction Charts

Group Screen							
Strip 1 Reactions	Control	Anti-A	Anti-B	Anti-D1	Anti-D2	A1 Cells	B Cells
	Well 2	Well 3	Well 4	Well 5	Well 6	Well 7	Well 8
WBcorQC 1	0-2	29-100	0-2	10-100	10-100	0-2	10-100
WBcorQC 2	0-2	0-2	29-100	0-2	0-2	10-100	0-2
WBcorQC 3	0-2	0-2	0-2	10-100	10-100	10-100	10-100
Strip 2 Reactions	Cell 1	Cell 2	Cell 3	Control			
	Well 1	Well 2	Well 3	Well 4			
WBcorQC 1	0-4	10-100	10-100	10-100			
WBcorQC 2	10-100	10-100	0-4	10-100			
WBcorQC 3	0-4	0-4	0-4	10-100			

Group							
Strip 1 Reactions	Control	Anti-A	Anti-B	Anti-D1	Anti-D2	A1 Cells	B Cells
	Well 2	Well 3	Well 4	Well 5	Well 6	Well 7	Well 8
WBcorQC 1	0-2	29-100	0-2	10-100	10-100	0-2	10-100
WBcorQC 2	0-2	0-2	29-100	0-2	0-2	10-100	0-2
WBcorQC 3	0-2	0-2	0-2	10-100	10-100	10-100	10-100

Screen					
Strip 1 Reactions	Cell 1	Cell 2	Cell 3	Control	
	Well 1	Well 2	Well 3	Well 4	
WBcorQC 1	0-4	10-100	10-100	10-100	
WBcorQC 2	10-100	10-100	0-4	10-100	
WBcorQC 3	0-4	0-4	0-4	10-100	

Weak D			
Strip 1 Reactions	Anit-D1	Control	
	Well 1	Well 2	
WBcorQC 1	10-100	10-100	
WBcorQC 2	0-4	10-100	
WBcorQC 3	10-100	10-100	

Phenotype						
CcEe						
Strip 1 Reactions	Control	C	c	E	e	
	Well 1	Well 2	Well 3	Well 6	Well 7	
WBcorQC 1	0-5	10-100	0-5	0-5	10-100	
WBcorQC 2	0-5	0-5	10-100	0-5	10-100	
WBcorQC 3	0-5	0-5	10-100	10-100	0-5	
WBcorQC 4	0-5	10-100	10-100	10-100	10-100	
Kell						
Strip 1 Reactions	Control	K				
	Well 1	Well 2				
WBcorQC 1	0-5	10-100				
WBcorQC 4	0-5	0-5				

Additional Guidance:

Well scores must fall within this range to pass QC. Positive reactions at the lower limits or negative reactions at the higher limits may indicate an emerging problem.

All levels of WBcorQC may not be required for specific assays. For example: WBcorQC 4 is not required for Group, Screen, or Weak D assays. Appendix D in the Echo Operator Manual lists the WBcorQC levels required for each specific assay.

If you have questions about the information contained in this communication, please call your Immucor Technical Support team at 855.IMMUCOR (466-8267).