

TRAINING UPDATE

Lab Location: SGMC & WOMC
Department: Core Group Leads & TIC

Date Distributed: 10/10/2019
Due Date: 11/12/2019
Implementation: 11/12/2019

DESCRIPTION OF PROCEDURE REVISION

Name of procedure:
Restarting Communication between the Urinalysis WAM and the LIS SGAH.LIS940 v1
Description of change(s):
<p>This is a new SOP describing steps to restart the connections between the Clinitek AUWi instrument system and DI-Instrument Manager.</p> <p>You may be asked to perform this procedure if there are communication issues with the AUWi.</p> <p>This SOP will be implemented on November 12, 2019</p>

Document your compliance with this training update by taking the quiz in the MTS system.

Non-Technical SOP

Title	Restarting Communication between the Urinalysis WAM and the LIS	
Prepared by	Leslie Barrett	Date: 9/23/2019
Owner	Marie Sabonis	Date: 9/23/2019

Laboratory Approval		
Print Name and Title	Signature	Date
<i>Refer to the electronic signature page for approval and approval dates.</i>		
Local Issue Date:		Local Effective Date:

TABLE OF CONTENTS

1. PURPOSE.....	1
2. SCOPE.....	1
3. RESPONSIBILITY.....	1
4. DEFINITIONS.....	2
5. PROCEDURE.....	2
6. RELATED DOCUMENTS.....	4
7. REFERENCES.....	4
8. REVISION HISTORY.....	5
9. ADDENDA AND APPENDICES.....	5

1. PURPOSE

This procedure provides the steps to restart the connections between the Clinitek AUWi instrument system and DI-Instrument Manager.

2. SCOPE

This procedure applies to the Clinitek AUWi instruments.

3. RESPONSIBILITY

IT personnel, core lab group leads and techs in charge (TIC) perform this procedure.

4. DEFINITIONS

AUWi – automated urinalysis analyzer

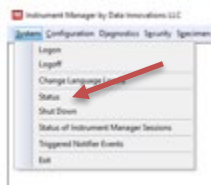
-Each AUWi consists of two connections. One for Orders & the other for Results.

DI – Data Innovations Instrument Manager

5. PROCEDURE

1. Reboot the AUWi PC

a. Check status screen on DI (from main screen banner → System → click on Status)



b. If the AUWi connections (Orders & Results) show an “On” status, then no further action required

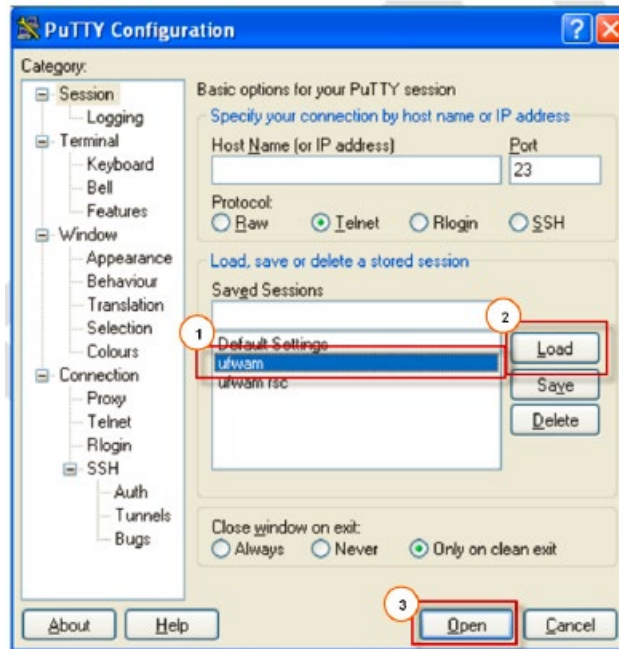
Connection /	Status	In Service
- Mirror Member		
ahc-inmgr-n02	CONNECTED	
- System		
Archive	On	
Purge	On	
Qmgr	On (2/2)	
Quality Control	On	
Specimen Routing	On	
- User Defined		
AUWi-SGMC Orders	On	Yes
AUWi-SGMC Results	On	Yes
AUWi-WDMC Orders	On	Yes
AUWi-WDMC Results	On	Yes

c. If the DI AUWi shows a status of “connecting” for the two connections, then proceed with next steps to re-start the WAM-LIS interface

2. Double click on the PuTTY icon on the desktop →



3. Select `ufwam > Load > Open`.

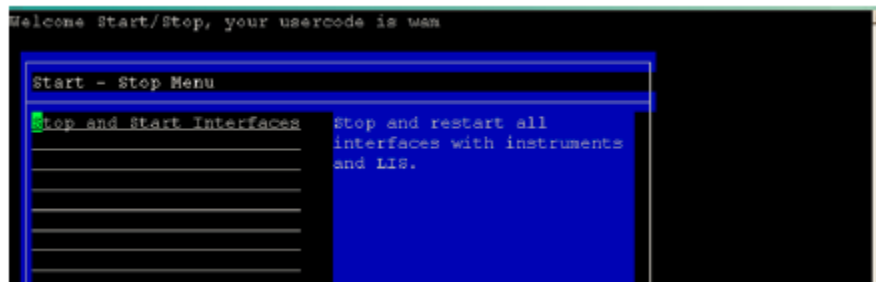


4. Log on using the following username and password.

Username: **wam**

Password: **abc123**

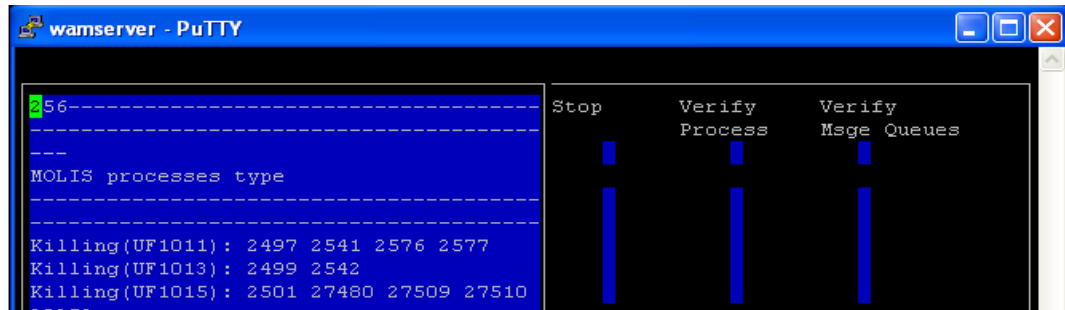
5. Type **molis k** at the command prompt and press **Enter**.
6. On the keyboard, press **s** when the following screen is displayed.



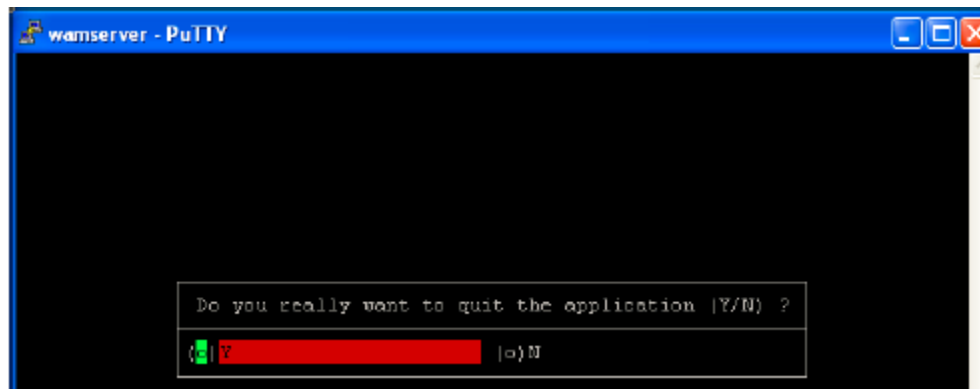
7. Use the arrow keys on the keyboard to move the cursor to the location highlighted in the example below.



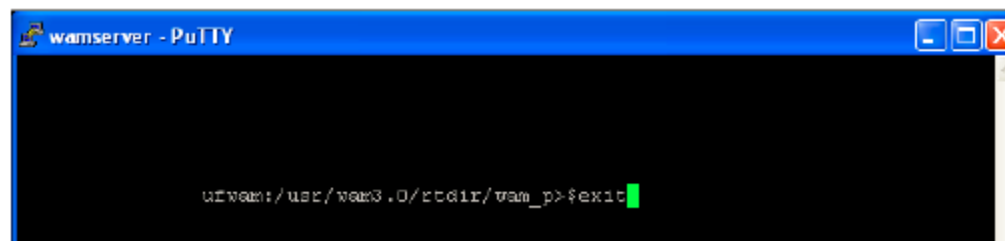
8. Press the **F5** key. The Putty software will display a series of processes: “killing”, “start”, “loop”.



9. Press **F4** three times to accept the changes and to back out of the application.
10. The application will ask if you really want to quit. Type **Y** and press **Enter**.



11. Type **exit** at the prompt and press **Enter**.



12. If necessary, restart the LIS interface as per laboratory procedure.

6. RELATED DOCUMENTS
N/A

7. REFERENCES
CLINITEK® AUWi System Customer Bulletin 28580 Rev. A, 2012-07, Siemens
Healthcare Diagnostics Inc.

8. REVISION HISTORY

Version	Date	Reason for Revision	Revised By	Approved By

9. ADDENDA AND APPENDICES

None