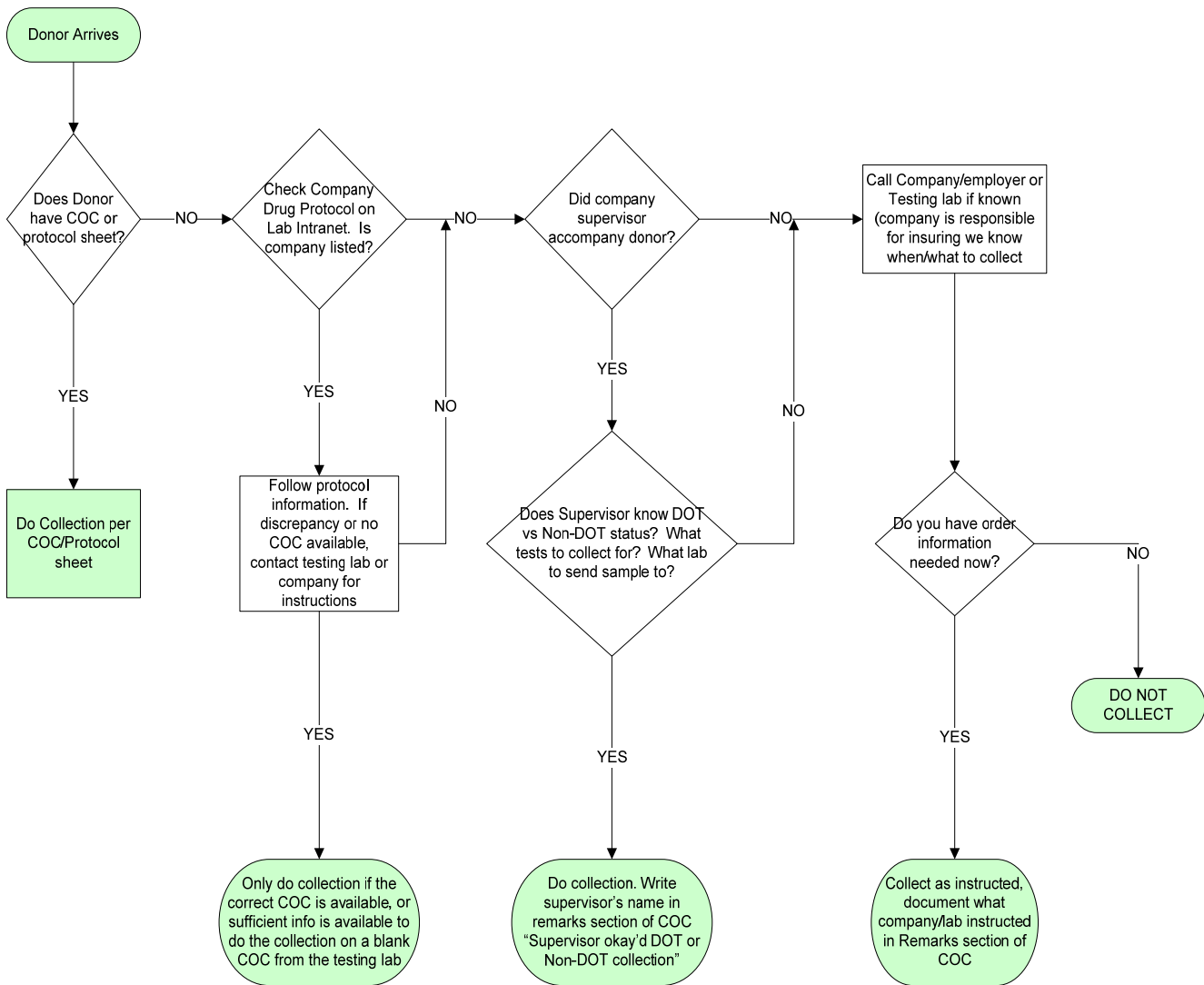


**DRUG COLLECTION URINE DONOR FLOW CHART**

- St. Joseph Medical Center Tacoma, WA
- St. Clare Hospital Lakewood, WA
- St. Elizabeth Hospital Enumclaw, WA
- St. Francis Hospital Federal Way, WA
- St. Anthony Hospital Gig Harbor, WA
- ENUM
- GIGL
- PSC

**PURPOSE**

As donors present for urine drug screen testing this flowchart is used to determine whether we can proceed with the collection. The donor must present with an order or prior arrangements must have been made that has established the donor's employer as a client for whom we do urine drug collections. This flowchart helps the Lab Assistant determine whether or not a collection can be obtained. No exceptions can be made without prior approval of a laboratory manager.



**DOCUMENT APPROVAL Purpose of Document / Reason for Change:**

7/26/12 – updated header/format. New document ID due to conflict with other document. Was SPC0820. Minor edits to flow chart.

<b>Committee Approval Date</b>	<input checked="" type="checkbox"/> Date: 7/26/12 <input type="checkbox"/> NA – revision of department-specific document which is used at only one facility	<b>Medical Director Approval</b> <i>(Electronic Signature)</i>	7/24/12 <i>Linda D. Burkhardt, M., D.</i>
--------------------------------	--	---	--