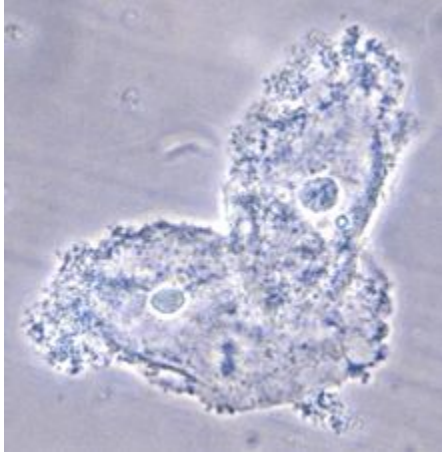
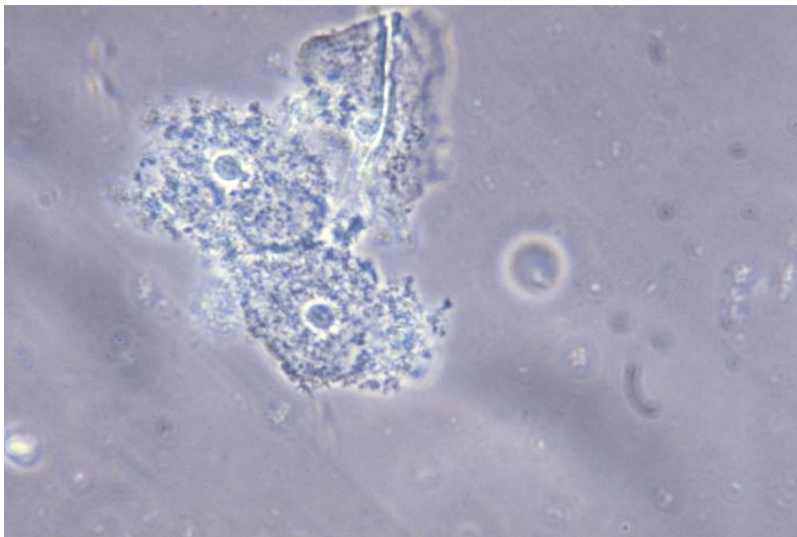


**Clue cells** are epithelial cells of the vagina that get their distinctive stippled appearance by being covered with bacteria. The etymology behind the term "clue" cell derives from the original research article from Gardner and Dukes describing the characteristic cells. The name was chosen for its brevity in describing the sine qua non of bacterial vaginosis.



Bacteria obscuring the borders of vaginal epithelial cells, giving them a stippled appearance.





Wet mount showing characteristic clue cells.

Note that the epithelial cells are so heavily covered by bacteria as to obscure the margins.

