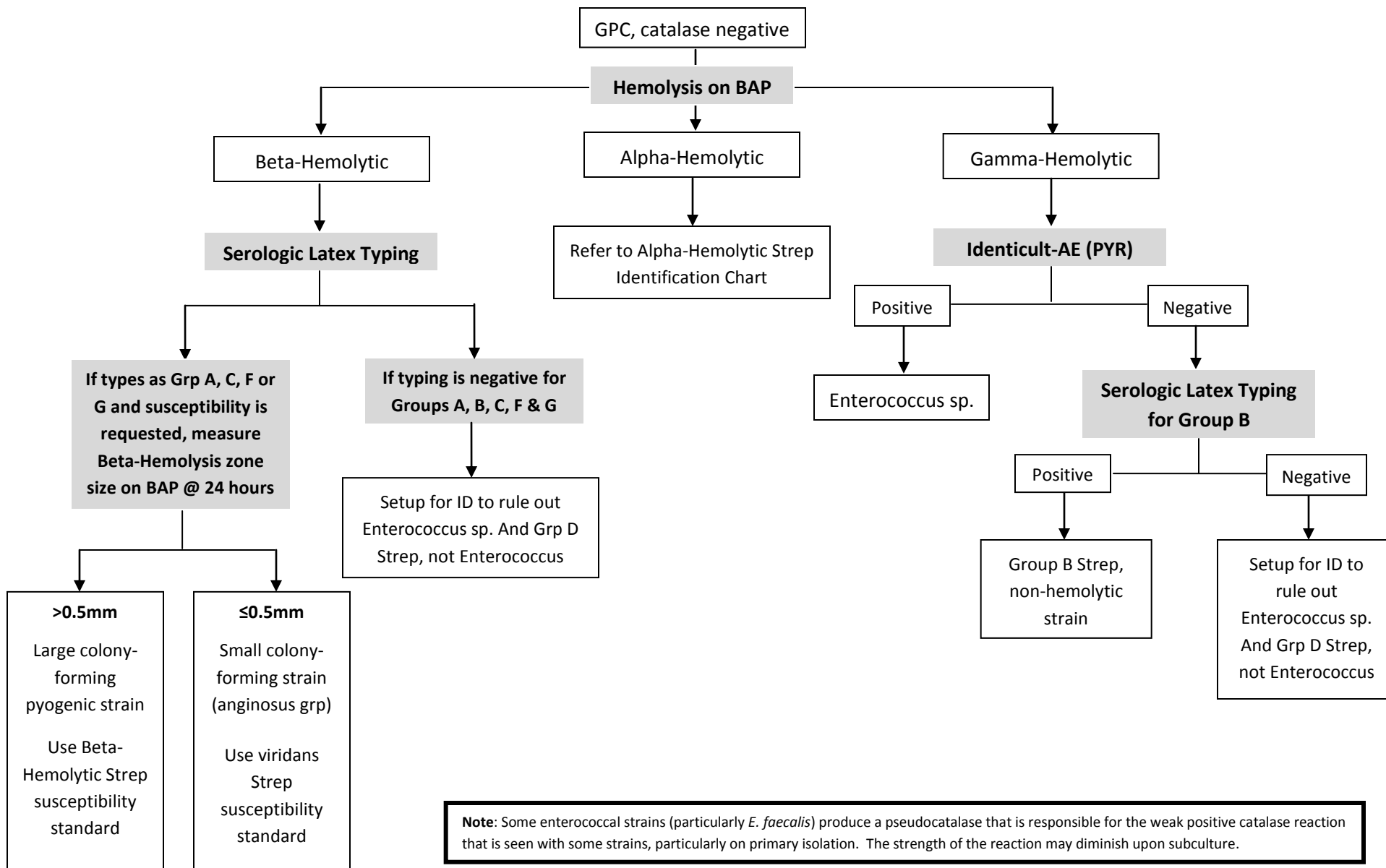




# MICRO.CULT.1.7 STREP IDENTIFICATION CHART

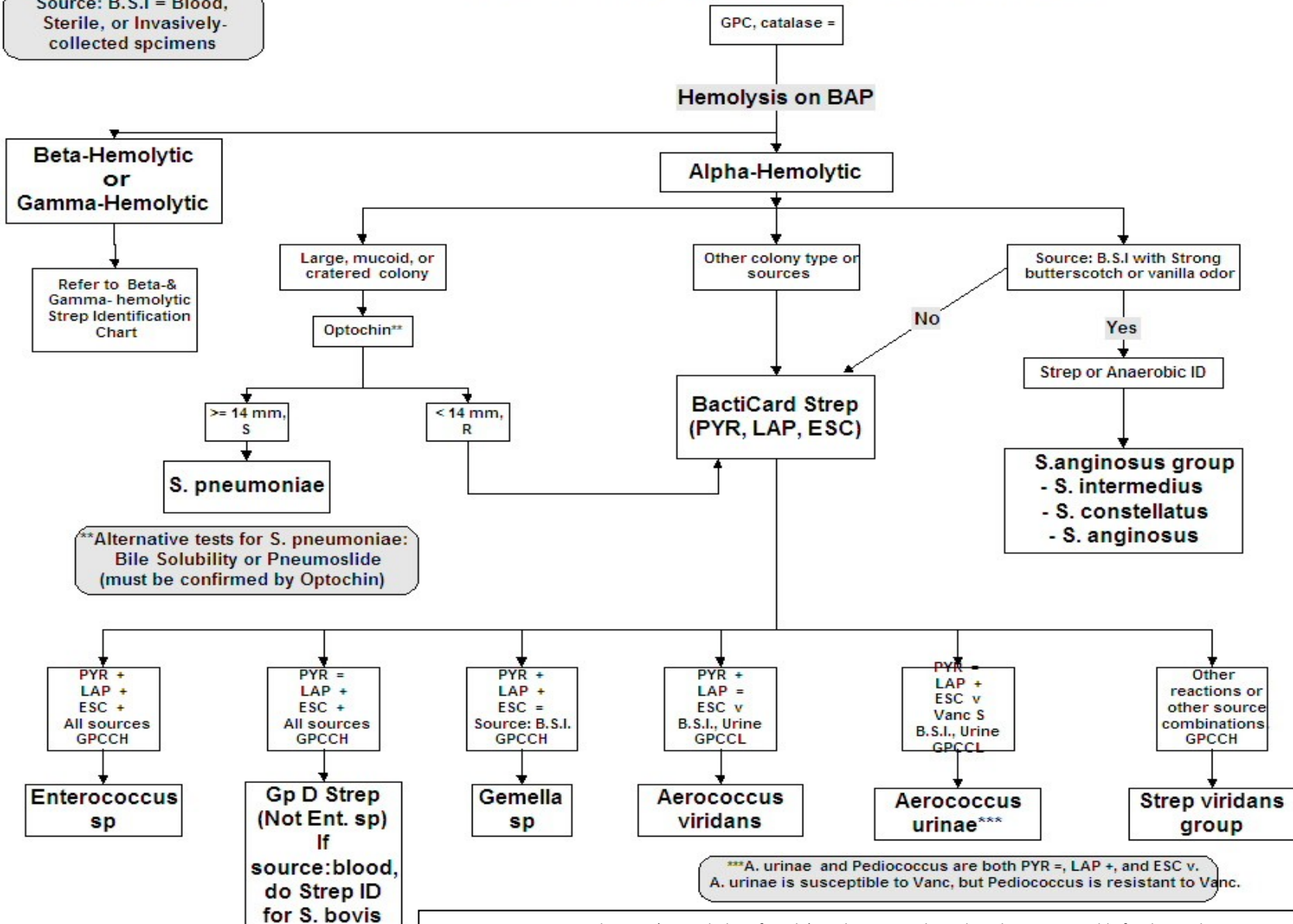
## Streptococcaceae Identification Chart: Beta & Gamma Hemolytic Strep





**MICRO.CULT.1.7 STREP IDENTIFICATION CHART**  
**Streptococcaceae Identification Chart--Alpha Hemolytic Strep**

Source: B.S.I = Blood, Sterile, or Invasively-collected specimens



Note: Some enterococcal strains (particularly *E. faecalis*) produce a pseudocatalase that is responsible for the weak positive catalase reaction that is seen with some strains, particularly on primary isolation. The strength of the reaction may diminish upon subculture.