

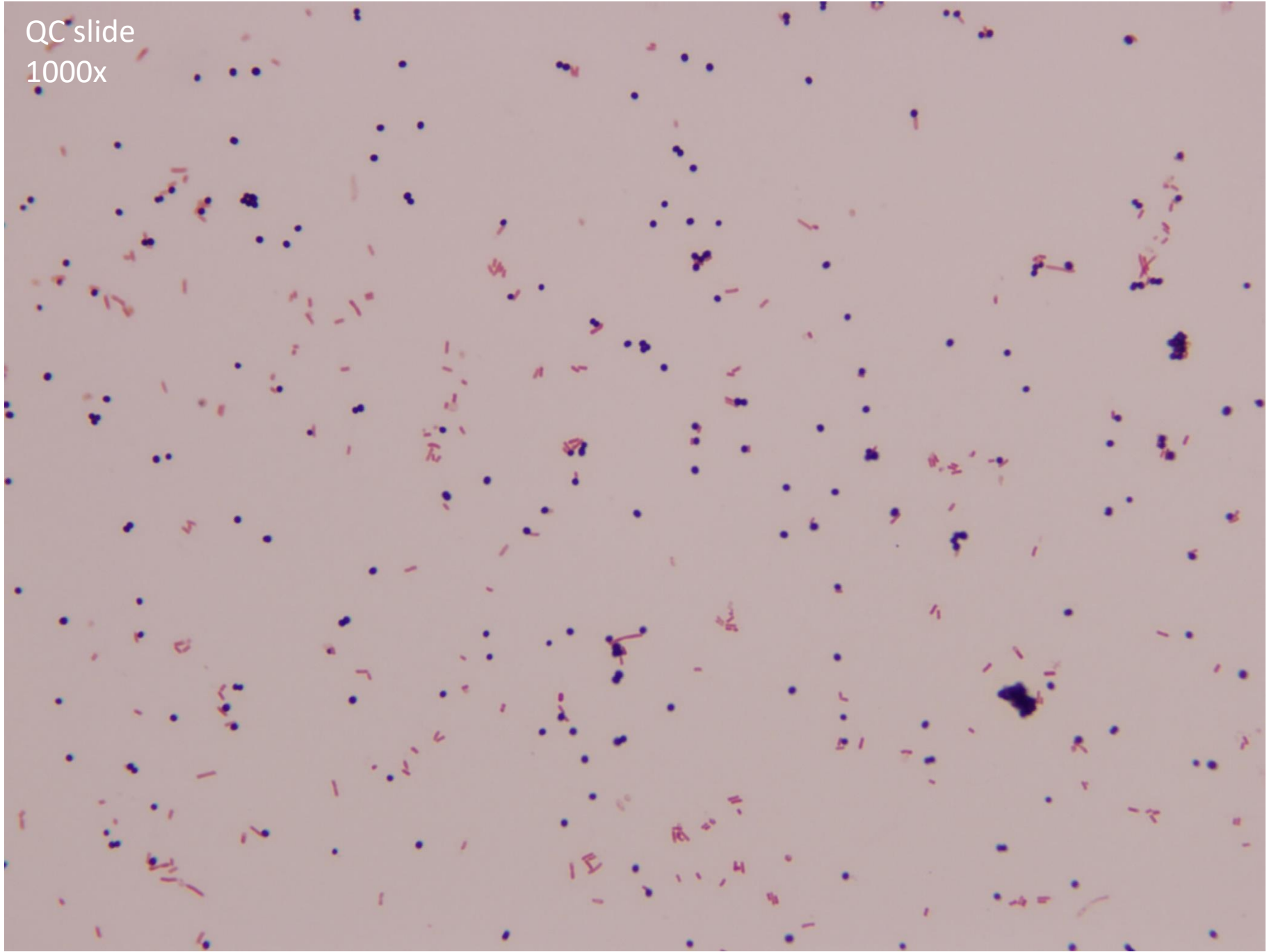
# Gram stain Competency Winter 2017 – *Results Overview*

Mid America Clinical Laboratories

# Gram Stain Competency

- First slide is QC.
- Report Polys only for slide 1
- Evaluate and quantitate organism(s) for slides 2 and 3.
- Slide 4 is fecal leukocyte smear, answer accordingly.
- Assume the picture represents the entire slide
- Evaluate the stained smears A and B according to your sites Lead/Manager directions.
- Answer Problem solving questions 7 and 8 on the answer sheet. (Be sure to answer all three parts of Q8)

QC slide  
1000x

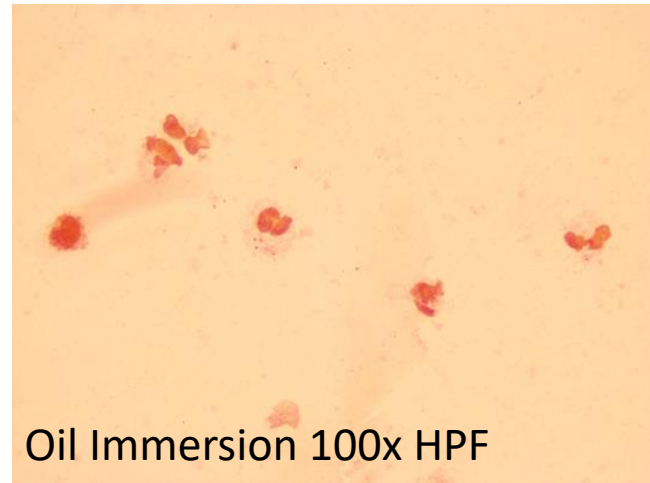


# 1) Report Polys

Source: Abdominal Wound

Polys are determined on low power. The picture depicts >25 cells per LPF.

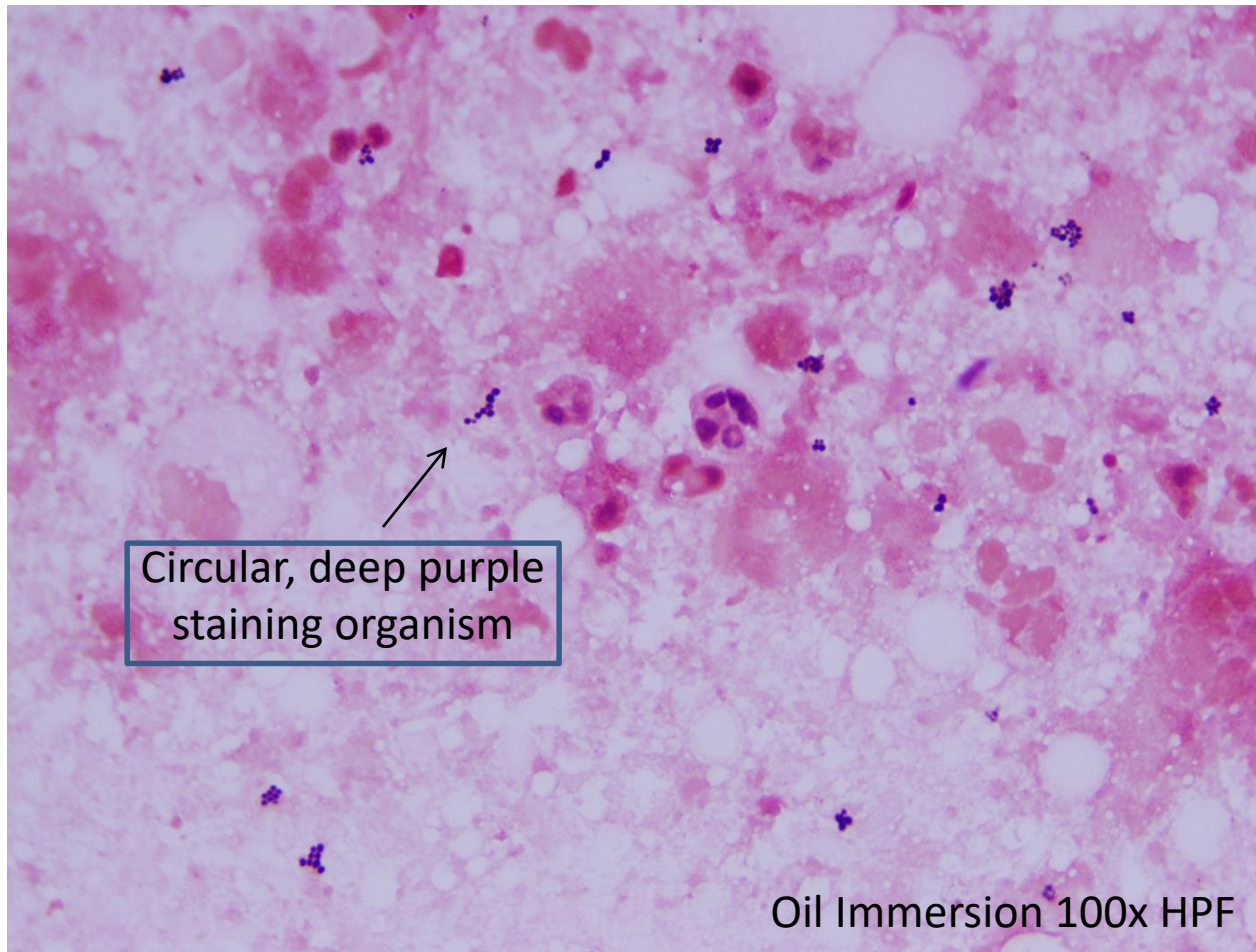
10x LPF



*Answer: Mod or Many polys*

## 2) Report organism(s) and quantity only

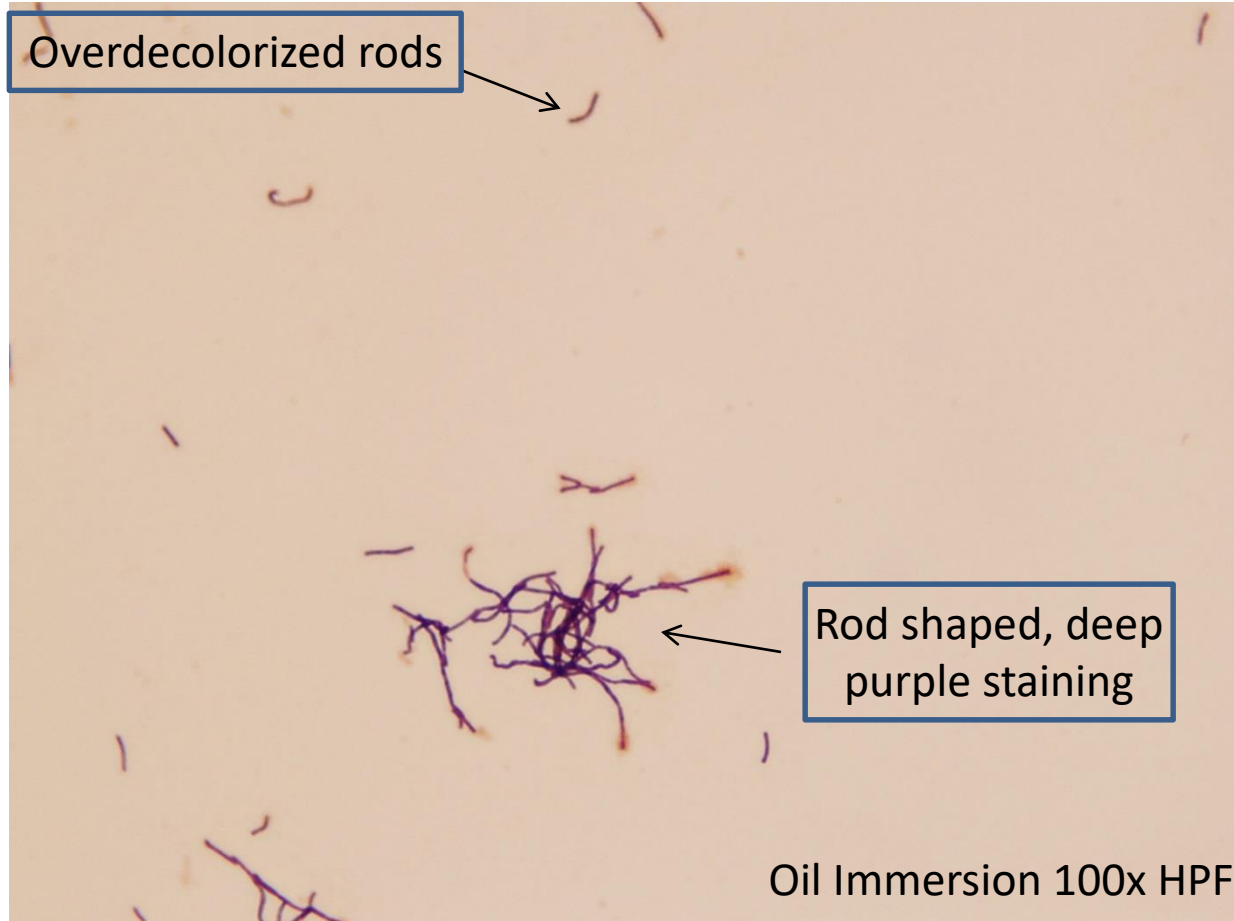
Source: Knee Aspirate



*Answer: Mod or Many Gram positive cocci*

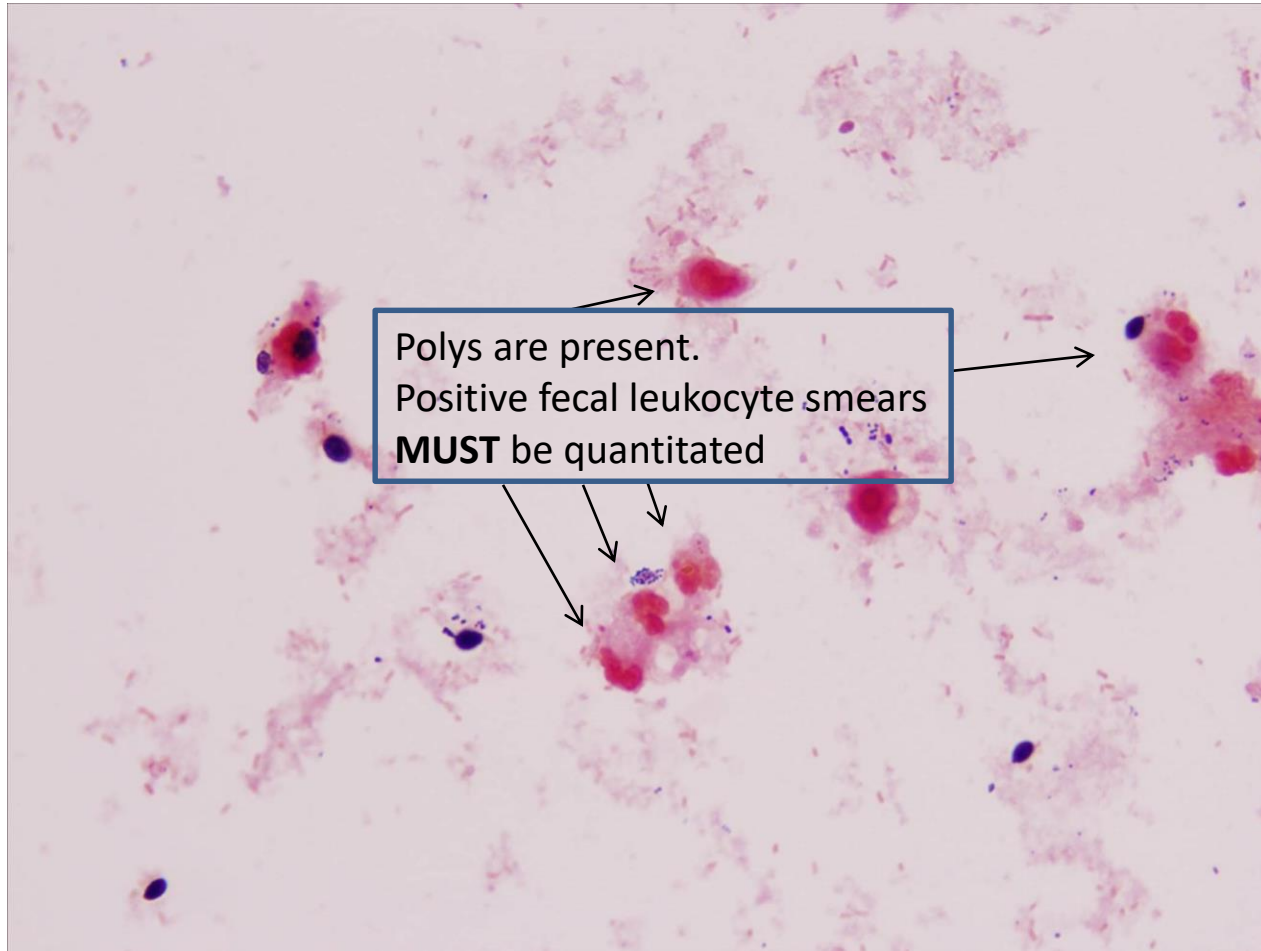
### 3) Report organism(s) and quantity only

Source: Mandibular Abscess



*Answer: Mod or Many Gram positive rods*

## 4) Fecal leukocyte smear



*Answer: Few or Mod polys*

## 5) Unstained smear A

- Report your findings as if the smear was a patient sample (Polys & organism(s))
- Follow your sites lead/manager directions as to which smear you read/stain
- Source: Direct Fluid



# Smear A

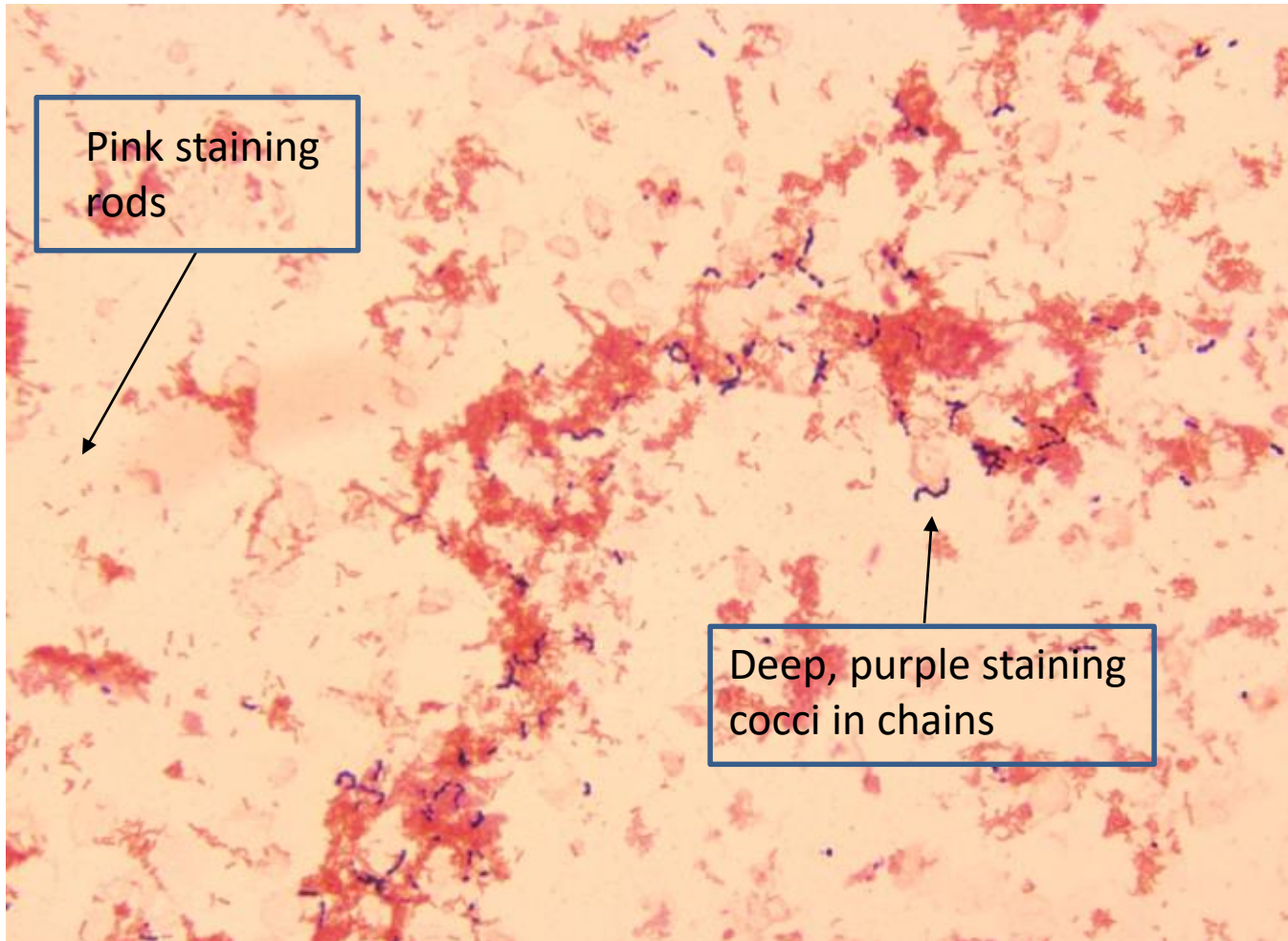
On low power, scan for polys



*Answer: Polys are reported for ALL patient smears*

# Smear A

On high power look for organisms



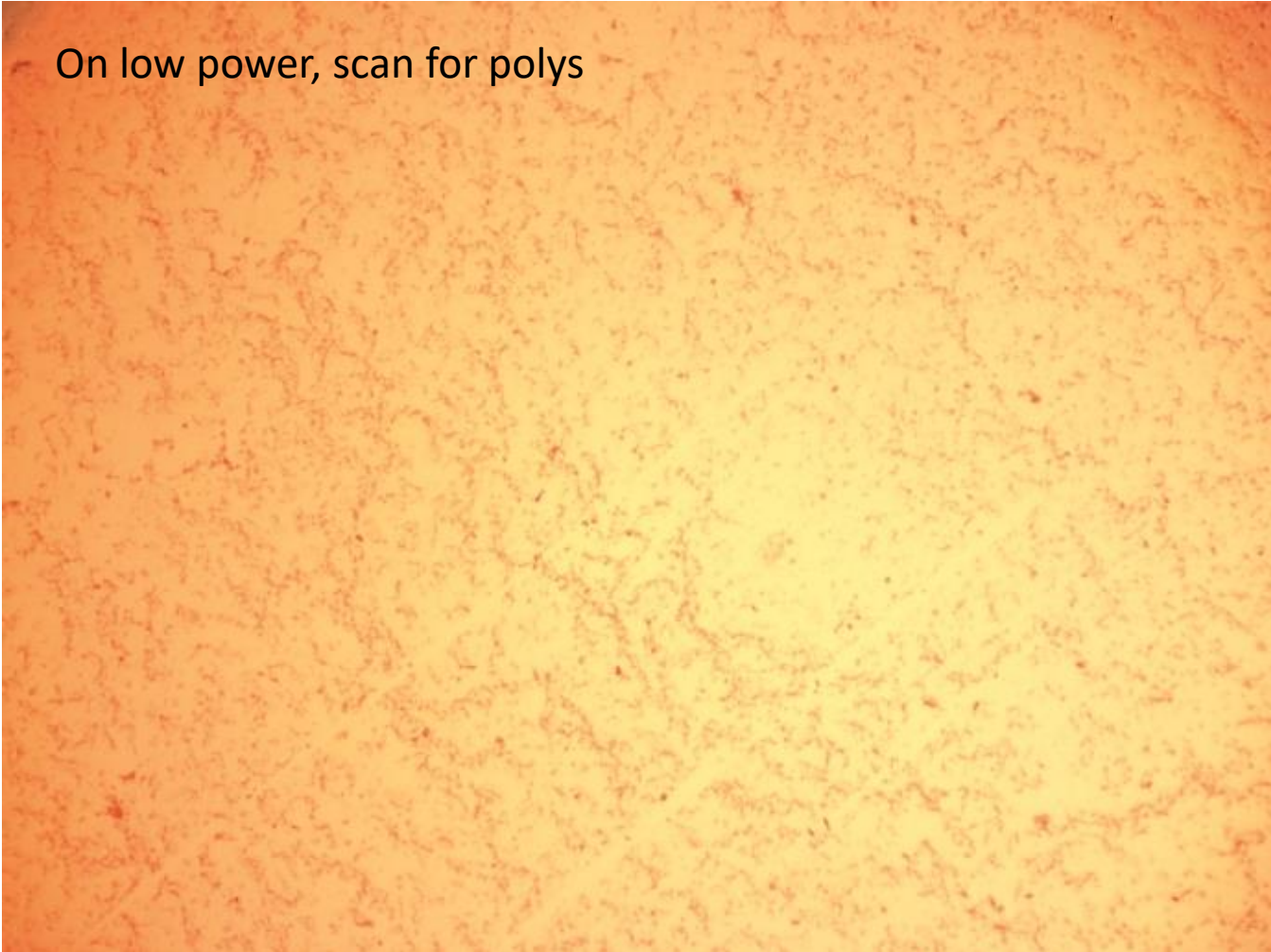
*Answer: Mod or Many GNR, Mod or Many GPC*

## 6) Unstained smear B

- Report your findings as if the smear was a patient sample (Polys & organism(s))
- Follow your sites lead/manager directions as to which smear you read/stain
- Source: Direct Fluid

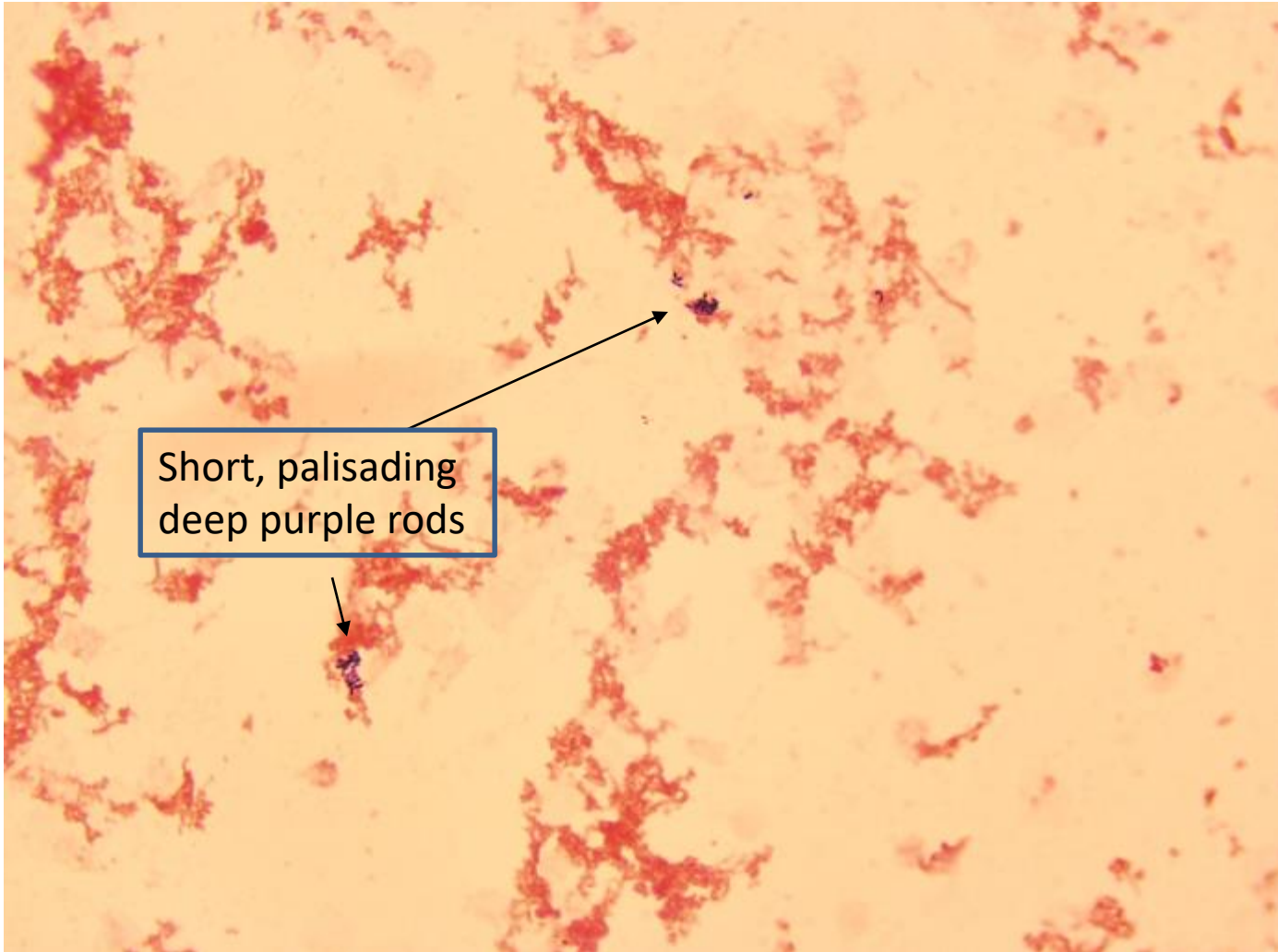
# Smear B

On low power, scan for polys



*Answer: Polys are reported for ALL patient smears*

# Smear B



*Answer: Few or Mod GPR*

## 7) Problem solving question

When viewing a Gram stain of a leg abscess you see 4 per Oil field Gram positive cocci; you did not see any polys on the smear nor epithelial cells. How should you report this smear?

- a) Few Gram positive cocci
- b) **Few Gram positive cocci; no polys seen**
- c) Moderate Gram positive cocci; no polys seen
- d) Gram positive cocci; no polys seen

# 8) Problem solving question

You view a CSF Gram stain with many polys and no organisms seen.

**Part I)** True or False: This smear must be sent to Regional Microbiology for Acridine Orange staining.

**Part II)** True or False: The report should be reported as Final then sent to Regional Micro.

**Part III)** What code should be included in the report if the smear is being sent to Regional Micro?

- a) GSFR
- b) GSPR
- c) UNSPU
- d) No code is needed, the report should remain preliminary