



<b>University of Washington Medical Center</b> <b>1959 NE Pacific Street. Seattle, WA, 98195</b> <b>Transfusion Services Laboratory</b> <b>Policies and Procedures Manual</b>	<b>Original Effective Date:</b> <b>02-11-16</b>	<b>Number:</b> <b>PC-0030.02</b>
	<b>Revision Effective Date:</b> <b>06-20-2019</b>	
<b>TITLE: Labeling Tubes and Gel Cards for Testing</b>		

**PURPOSE:**

To provide instructions for labeling tubes and gel cards for manual testing.

**PRINCIPLE & CLINICAL SIGNIFICANCE:**

All testing tubes and gel cards should be clearly labeled with the sample ID (patient or donor) and reagent(s) to prevent mix-up of tubes and test results. Failure to do so could lead to a patient receiving the wrong blood product.

**POLICY:**

All testing tubes and gel cards are clearly labeled to identify the patient and/or donor and reagents being tested prior to performing testing

**SPECIMEN REQUIREMENTS:**

NA

**REAGENTS/SUPPLIES/EQUIPMENT:**

Reagents:	Supplies:	Equipment:
NA	<ul style="list-style-type: none"> <li>• Test tubes</li> <li>• MTS gel cards</li> <li>• Marking pen</li> <li>• LIS accession or container labels</li> </ul>	NA

**QUALITY CONTROL:**

NA

**INSTRUCTIONS:**

STEP	Action	
1	Label test tubes according to the following	
	Type of Tube	Label in one of the following manners
	Patient cell suspension	<ul style="list-style-type: none"> <li>• Patient's name or unique number such as the medical record number</li> <li>• Unique medical record number</li> <li>• LIS label</li> </ul>
Donor cell suspensions	<ul style="list-style-type: none"> <li>• Minimum last four digits of the donor identification number (DIN) or</li> <li>• DIN sticker</li> </ul>	

STEP	Action																																	
	Reaction tubes or MTS gel cards	<ul style="list-style-type: none"> <li>• Minimum 1<sup>st</sup> 3 letters of last name or LIS label and</li> <li>• Identifiable reagent abbreviation to distinguish it from other reagents</li> </ul> <p><b>EXAMPLES:</b> see <b>Appendix 1</b> for a picture of labeling</p> <table border="1" data-bbox="574 464 1370 1251"> <thead> <tr> <th>Reagent</th> <th>Abbreviation</th> </tr> </thead> <tbody> <tr><td>anti-A</td><td>A</td></tr> <tr><td>anti-B</td><td>B</td></tr> <tr><td>anti-D</td><td>D</td></tr> <tr><td>A Cell</td><td>AC</td></tr> <tr><td>B Cell</td><td>BC</td></tr> <tr><td>Poly IgG, -C3d</td><td>Poly</td></tr> <tr><td>anti-IgG</td><td>IgG</td></tr> <tr><td>anti-C3d</td><td>C3</td></tr> <tr><td>autocontrol</td><td>AC</td></tr> <tr><td>control</td><td>C</td></tr> <tr><td>Screening cell 1</td><td>1 or SC1</td></tr> <tr><td>Screening cell 2</td><td>2 or SC2</td></tr> <tr><td>Screening cell 3</td><td>3 or SC3</td></tr> <tr><td>Selected cells</td><td>Appropriate cell# - Indicate type of panel if same cell # in multiple panels</td></tr> <tr><td>Antigen typing</td><td>Antisera type</td></tr> </tbody> </table>	Reagent	Abbreviation	anti-A	A	anti-B	B	anti-D	D	A Cell	AC	B Cell	BC	Poly IgG, -C3d	Poly	anti-IgG	IgG	anti-C3d	C3	autocontrol	AC	control	C	Screening cell 1	1 or SC1	Screening cell 2	2 or SC2	Screening cell 3	3 or SC3	Selected cells	Appropriate cell# - Indicate type of panel if same cell # in multiple panels	Antigen typing	Antisera type
Reagent	Abbreviation																																	
anti-A	A																																	
anti-B	B																																	
anti-D	D																																	
A Cell	AC																																	
B Cell	BC																																	
Poly IgG, -C3d	Poly																																	
anti-IgG	IgG																																	
anti-C3d	C3																																	
autocontrol	AC																																	
control	C																																	
Screening cell 1	1 or SC1																																	
Screening cell 2	2 or SC2																																	
Screening cell 3	3 or SC3																																	
Selected cells	Appropriate cell# - Indicate type of panel if same cell # in multiple panels																																	
Antigen typing	Antisera type																																	
	Titer reaction tubes or MTS gel cards	Label as specified above and with the dilution or the reciprocal of the dilution  <b>EXAMPLE:</b> First tube – 1:1 or 1 Second tube – 1.2 or 2																																

**CALCULATIONS/INTERPRETATIONS/RESULTS REPORTING/NORMAL VALUES/CRITICAL VALUES**

NA

**CALIBRATION**

NA

**PROCEDURE NOTES AND LIMITATIONS**

NA

**REFERENCES:**

Technical Manual. Bethesda, MD: AABB Press, current edition

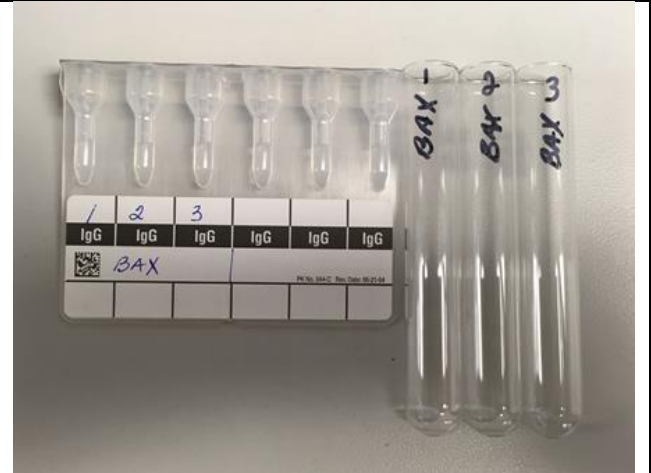
**RELATED DOCUMENTS:**

NA

**APPENDIX:**

**Appendix 1: Example of Labeling for an Antibody Screen**

Patient's last name is Baxter



<b>UWMC SOP Approval:</b>		
<b>UWMC CLIA Medical Director</b>	Mark H. Wener, MD	Date
<b>Transfusion Service Manager</b>	Nina Sen	Date
<b>Compliance Analyst</b>	Christine Clark	Date
<b>Transfusion Service Medical Director</b>	Monica Pagano, MD	Date
<b>UWMC Biennial Review:</b>		
		Date
		Date