

The Language of Dermatology

© 2012 Association of Certified Dermatology Techs

The Language of Dermatology



© 2012 Association of Certified Dermatology Techs

Before we begin....

© 2012 Association of Certified Dermatology Techs

“Flat” Lesions

- Macule
- Patch

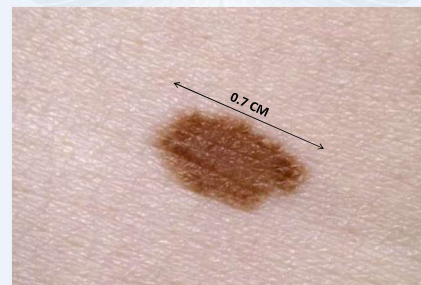
© 2012 Association of Certified Dermatology Techs

Macule

- “Textbook” Definition
 - A **flat** lesion which is no larger than 0.5 cm in diameter.
- “Real World” Definition
 - A **flat** lesion which is up to 1.5 cm in diameter.

© 2012 Association of Certified Dermatology Techs

Macule



© 2012 Association of Certified Dermatology Techs

Patch

- “Textbook” Definition
 - A **flat** lesion which is larger than 0.5 cm in diameter.
- “Real World” Definition
 - A **flat** lesion which is *at least* 1 cm in diameter.
 - Also, although overall “flat”, they can be scaly or have slight texture.

© 2012 Association of Certified Dermatology Techs

Patch



© 2012 Association of Certified Dermatology Techs

“Raised” Lesions

- Papule
- Nodule
- Cyst
- Plaque
- Wheal

© 2012 Association of Certified Dermatology Techs

Papule

- “Textbook” Definition
 - A **raised** lesion which is no larger than 0.5 cm in diameter.
- “Real World” Definition
 - A **raised** lesion which is up to 1 cm in diameter (or even slightly larger).

© 2012 Association of Certified Dermatology Techs

Papule



© 2012 Association of Certified Dermatology Techs

Nodule

- Definition
 - A solid, relatively **spherical** lesion which is *at least* 0.5 cm in diameter.

© 2012 Association of Certified Dermatology Techs

Nodule



© 2012 Association of Certified Dermatology Techs

Cyst

- Definition
 - A **spherical** lesion which is filled with semi-solid material.

© 2012 Association of Certified Dermatology Techs

Cyst



© 2012 Association of Certified Dermatology Techs

Plaque

- “Textbook” Definition
 - A solid, plateau-like elevation measuring at least 0.5 cm in diameter.
- “Real World” Definition
 - A solid, plateau-like elevation measuring *at least* 1 cm in diameter (or larger).

© 2012 Association of Certified Dermatology Techs

Plaque



© 2012 Association of Certified Dermatology Techs

Wheal

- “Textbook” Definition
 - Lesion resulting from swelling of the skin caused by the escape of plasma fluid from within the vessels of the upper dermis.
- “Real World” Definition
 - A hive.
- Instead of “wheal”, some dermatologists say...
 - Urticarial papule (“hive-like” papule), *or...*
 - Urticarial plaque (“hive-like” plaque).

© 2012 Association of Certified Dermatology Techs

Wheal



© 2012 Association of Certified Dermatology Techs

“Fluid-Filled” Lesions

- Vesicle
- Bulla
- Pustule

© 2012 Association of Certified Dermatology Techs

Vesicle

- “Textbook” Definition
 - Fluid-filled cavity measuring less than 0.5 cm in diameter.
- “Real World” Definition
 - Fluid-filled cavity measuring up to 1 cm in diameter.

© 2012 Association of Certified Dermatology Techs

Vesicle



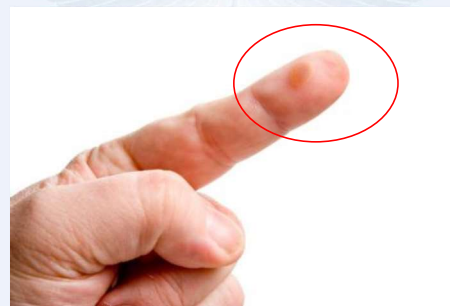
© 2012 Association of Certified Dermatology Techs

Bulla

- Definition
 - Fluid-filled cavity measuring *at least* 0.5 cm in diameter.
- Spelling can be confusing
 - Bulla (singular).
 - Bullae (plural).

© 2012 Association of Certified Dermatology Techs

Bulla



© 2012 Association of Certified Dermatology Techs

Pustule

- Definition
 - A thin-walled, pus-filled papule.

© 2012 Association of Certified Dermatology Techs

Pustule



© 2012 Association of Certified Dermatology Techs

“Depressed” Lesions

- Erosion
- Ulcer
- Atrophy

© 2012 Association of Certified Dermatology Techs

Erosions and Ulcers

- Erosion
 - A defect of the skin resulting from the loss or breakdown of the *epidermis only*.
 - Heals *without* scarring.
- Ulcer
 - A defect of the skin resulting from the loss or breakdown of the epidermis and *at least* the upper portion of the dermis.
 - Heals *with* scarring.

© 2012 Association of Certified Dermatology Techs

Erosion



© 2012 Association of Certified Dermatology Techs

Ulcer



© 2012 Association of Certified Dermatology Techs

Atrophy

- Definition
 - Loss of normal thickness of the skin.

© 2012 Association of Certified Dermatology Techs

Atrophy



© 2012 Association of Certified Dermatology Techs

Surface Changes

- Scaling
- Crusting
- Excoriations
- Fissures
- Lichenification

© 2012 Association of Certified Dermatology Techs

Scaling

- Definition
 - Describes the small, **dry** particles which arise from the outermost layer of the epidermis.

© 2012 Association of Certified Dermatology Techs

Scaling



© 2012 Association of Certified Dermatology Techs

Crusting

- Definition
 - Describes the hardened deposits resulting from dried **fluid**.

© 2012 Association of Certified Dermatology Techs

Crusting



"PURULENT CRUSTING" = CRUSTING FORMED FROM PUS
© 2012 Association of Certified Dermatology Techs

Crusting



"PURULENT" = "FORMED FROM PUS" OR "PUS-LIKE"
© 2012 Association of Certified Dermatology Techs

Excoriation

- Definition
 - Injury to the surface of the skin resulting from scratching.

Excoriation



Fissure

- Definition
 - Vertical separation of the skin surface, resulting from excessive tension or decreased elasticity.
 - Essentially a "crack" in the skin.

Fissure

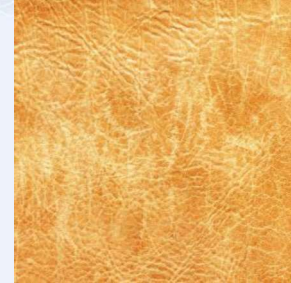


Lichenification

- Definition
 - Thickening of the skin with accentuation of the surface markings.
 - Think “leather”.

© 2012 Association of Certified Dermatology Techs

Lichenification



© 2012 Association of Certified Dermatology Techs

Lichenification



© 2012 Association of Certified Dermatology Techs

Adjectives of Color

- Erythematous
- Violaceous
- Purpuric
- Hypopigmented/Hyperpigmented

© 2012 Association of Certified Dermatology Techs

Erythematous

- Definition
 - Simply means “red”.
 - For example....
- “Erythematous papule” = “Reddish papule”

© 2012 Association of Certified Dermatology Techs

Erythematous



© 2012 Association of Certified Dermatology Techs

Violaceous

- Definition
 - Means “violet” in color.
 - Used to describe lesions which are overall erythematous, but have shades of “bluish-purple” within.
 - Unique to certain conditions, such as Lichen Planus.

© 2012 Association of Certified Dermatology Techs

Violaceous



© 2012 Association of Certified Dermatology Techs

Purpuric

- Definition
 - Means “bruised” or “bruise-like”.
 - For example...

“Purpuric patch” = “Bruise-like patch”

© 2012 Association of Certified Dermatology Techs

Purpuric



© 2012 Association of Certified Dermatology Techs

Hypopigmented/Hyperpigmented

- Definition
 - Hypopigmented
 - “Lighter” in color as compared to the patient’s normal skin tone.
 - Hyperpigmented
 - “Darker” in pigment as compared to the patient’s normal skin tone.

© 2012 Association of Certified Dermatology Techs

Hypopigmented



© 2012 Association of Certified Dermatology Techs

Hyperpigmented



© 2012 Association of Certified Dermatology Techs

Shape/Configuration of Lesions

- Linear
- Annular
- Nummular/Discoid
- Blaschkoid
- Morbilliform
- Polycyclic
- Arcuate
- Reticular

© 2012 Association of Certified Dermatology Techs

Linear

- Definition
 - Means “line-like”.
 - For example....

“Linear cluster of verrucae” =
“Cluster of warts arranged in a line-like fashion”

© 2012 Association of Certified Dermatology Techs

Linear



© 2012 Association of Certified Dermatology Techs

Annular

- Definition
 - Means “ring-shaped”.
 - Most often seen with fungal “ringworm” infections.

© 2012 Association of Certified Dermatology Techs

Annular



© 2012 Association of Certified Dermatology Techs

Nummular/Discoid

- Definition
 - Both mean “round” or “coin-shaped”.
 - For example....

“Nummular eczematous patches” =
“Round eczematous patches”

© 2012 Association of Certified Dermatology Techs

Nummular/Discoid



© 2012 Association of Certified Dermatology Techs

Blaschkoid

- Named after Dr. Blaschko.
- “Blaschko’s Lines” - Invisible lines within the skin which are believed to trace the pattern of embryonic skin development.
- “Blaschkoid” lesions and rashes follow these lines which are “whorled”, thus...
 - “Blaschkoid” means “whorled” in appearance.

© 2012 Association of Certified Dermatology Techs

Blaschkoid



© 2012 Association of Certified Dermatology Techs

Morbilliform

- Definition
 - Means “measles-like”.
 - “Morbilliform” rashes are those which are comprised of numerous erythematous macules and papules.

© 2012 Association of Certified Dermatology Techs

Morbilliform



© 2012 Association of Certified Dermatology Techs

Polycyclic

- Definition
 - “Comprised of numerous rings”.

© 2012 Association of Certified Dermatology Techs

Polycyclic



© 2012 Association of Certified Dermatology Techs

Arcuate

- Definition
 - “Curved”.

© 2012 Association of Certified Dermatology Techs

Arcuate



© 2012 Association of Certified Dermatology Techs

Reticular

- Definition
 - Means “Lace-like”.

© 2012 Association of Certified Dermatology Techs

Reticular



© 2012 Association of Certified Dermatology Techs

Summary

- *Remember...*

- Expectations are not that you know when/how to use these, but you should at least be “familiar” with their use and spelling.

© 2012 Association of Certified Dermatology Techs