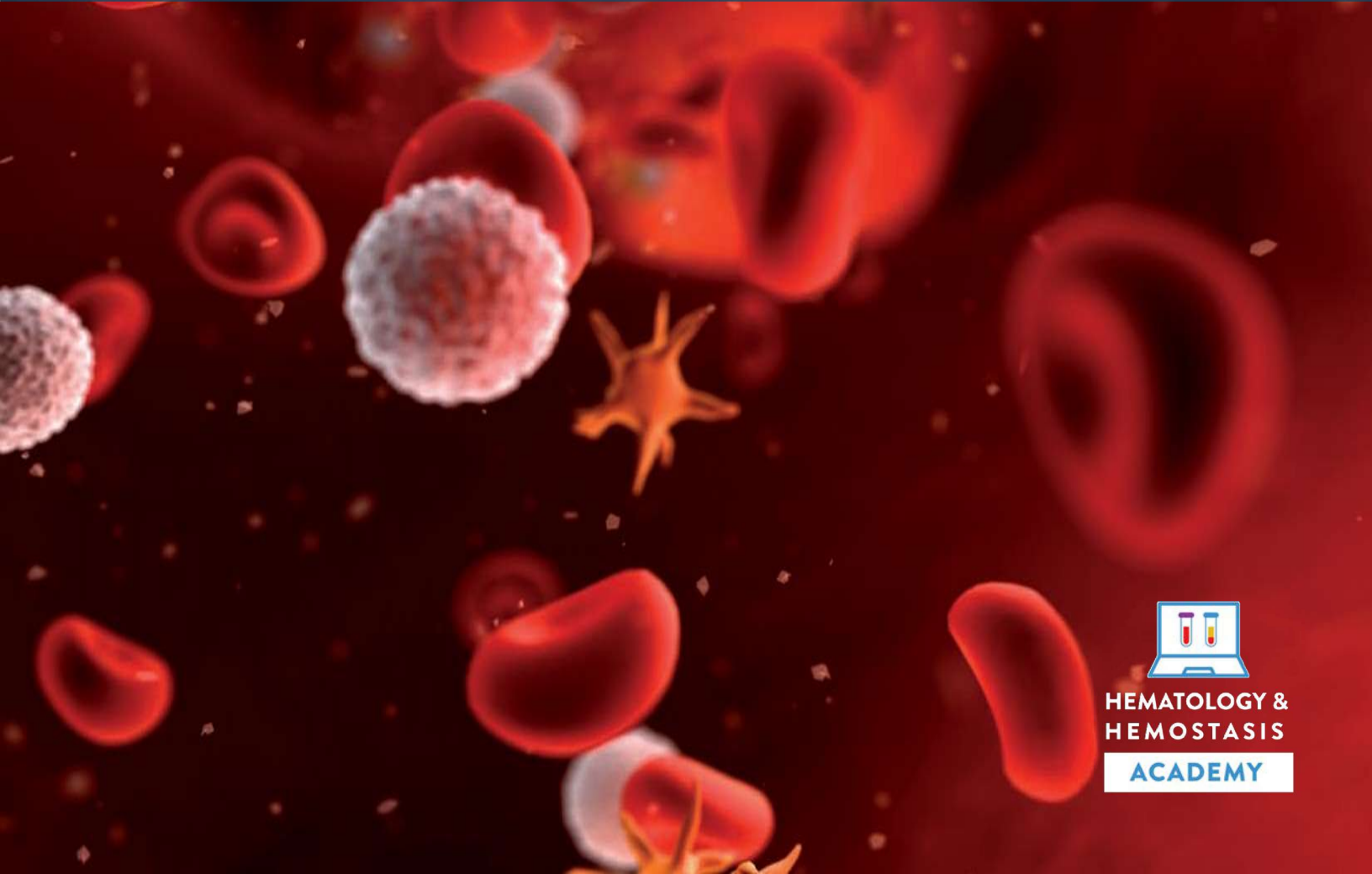




DIAGNOSTICS

Hematology

Learning Guide Series



HEMATOLOGY &
HEMOSTASIS

ACADEMY

ABBOTT DIAGNOSTICS

HEMATOLOGY EDUCATIONAL SERIES

Intended Audience

This Learning Guide is intended to serve the basic educational needs of health care professionals who are involved in the fields of laboratory medicine. Anyone associated with the testing of the formed elements of the blood will find this monograph of special interest.

The monograph features basic information necessary to understand and appreciate the importance of hematology testing in the laboratory and is intended for those who work and use the hematology laboratory services. These individuals include, but are not limited to, laboratory technicians, laboratory technologists, laboratory supervisors and managers, nurses, suppliers, and other physician office and laboratory support personnel.

How to Use This Learning Guide

Each section begins with specific learning objectives that will help you focus on key concepts presented in the section. There is a short review quiz at the end of each section designed to help you recall the concepts introduced. If you answer the questions incorrectly, review the appropriate portions of the section before moving to the next section.

A glossary of terms is included at the end of this Learning Guide for a quick reference of commonly used terms in the science of hematology.

Acknowledgements

Abbott acknowledges the collaboration and work of Patrick Barnes, BGS, MT (ASCP) MA, Laboratory Manager, Hematology, Barnes-Jewish Hospital, St. Louis, MO, for his dedication to making this Learning Guide a useful resource for health care professionals.

CONTENTS

SECTION 1	
PHYSIOLOGIC FEATURES OF THE BODY	4
SECTION 2	
OVERVIEW OF BLOOD	7
SECTION 3	
RED BLOOD CELLS.....	13
SECTION 4	
DISORDERS OF RED BLOOD CELLS	18
SECTION 5	
WHITE BLOOD CELLS	23
SECTION 6	
DISORDERS OF WHITE BLOOD CELLS	30
SECTION 7	
PLATELETS AND HEMORRHAGIC DISORDERS	33
SECTION 8	
HEMATOLOGY TESTS	37
REFERENCES	45
CORRECT RESPONSES TO REVIEW QUESTIONS	46
GLOSSARY OF TERMS	47