

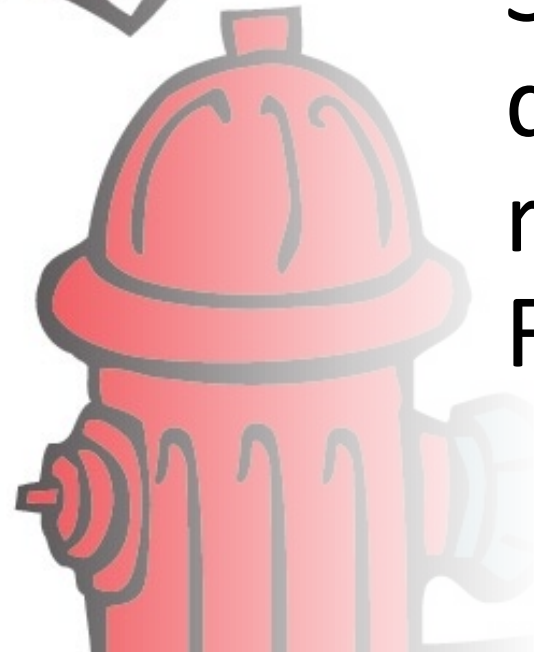


# **Fire Drill Training (Lab)**



# Emergency Code

- Code Red (Fire)
- X 113
- Section lead/  
designee  
respond with  
Fire Extinguisher



# Fire Response Acronym:

S = Save Lives (remove anyone from danger; close doors)



A = Alarm (pull fire alarm, notify co-workers and dial x 113)



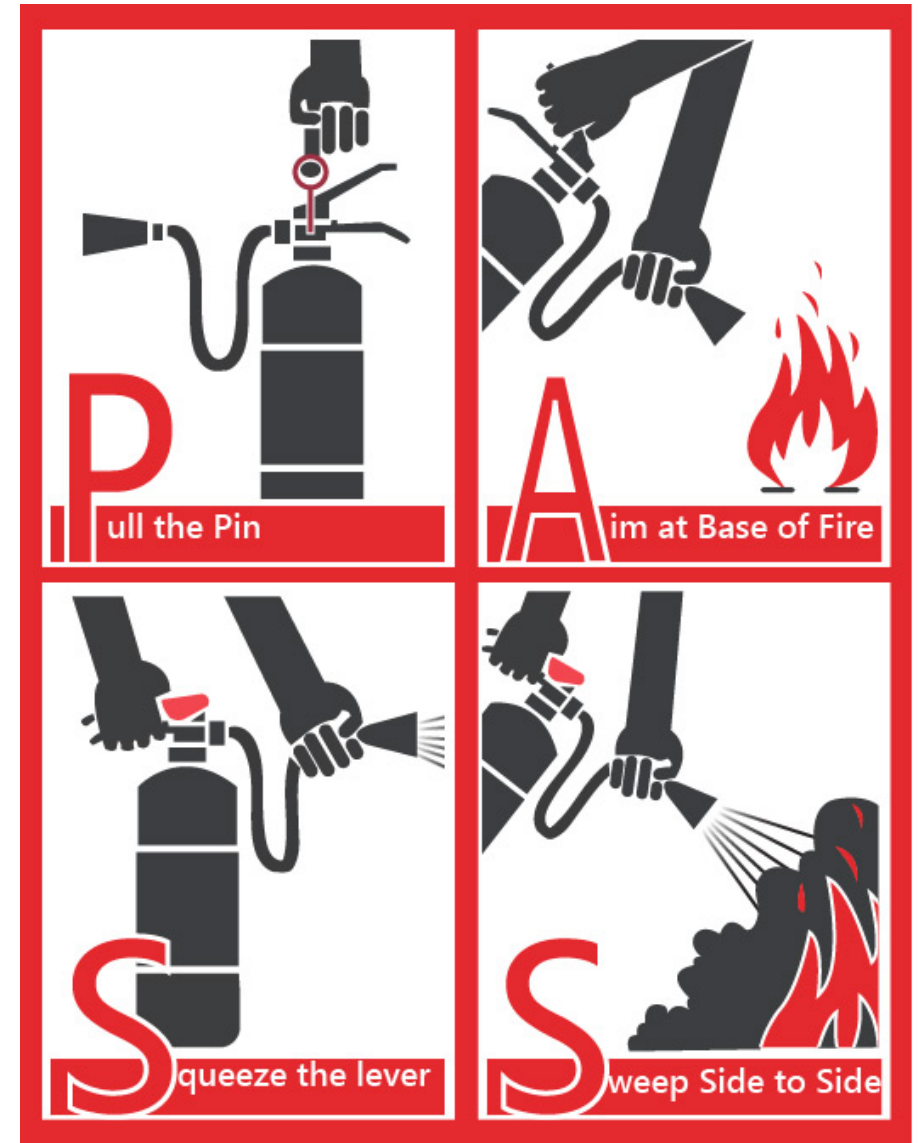
F = Fight Fire (use fire extinguisher, only if safety)



E = Evacuate (clear corridors, move patients/visitors horizontally to a safe location, if necessary)

# Fire Extinguisher Acronym

- **P** = Pull the pin
- **A** = Aim extinguisher at base of fire
- **S** = Squeeze the handle
- **S** = Sweep from side to side



PATHOLOGY**EMERGENCY FIRE PROCEDURE  
PATHOLOGY**

When fire or smoke is discovered in your area:

**1. SAFETY OF LIFE**

- Remove all people in the immediate fire area and close the door to the room to contain the fire.

**2. NOTIFICATION**

- Pull the nearest fire alarm and notify the operator by dialing **113**; give the operator your name, location of fire, and type of fire (e.g. trash can, microwave, etc.).
- Relay location and type of fire to other staff within the unit.
- The laboratory supervisor will direct the activities of the of the staff members.

**3. EXTINGUISH THE FIRE**

- Close doors to all other areas – adjacent rooms and fire doors.
- Return to fire with the proper fire extinguisher and use if possible and practical, until the Fire Department arrives.

**4. RELOCATE / EVACUATE**

- Remove all items from the corridor to the nearest empty or unoccupied room.
- Remove patients/staff from the adjoining area and exit the unit.

**OTHER CONSIDERATIONS:**

If safe to do so,

- Shut off all gas equipment.
- Turn off all fans and blowers.
- Turn off all unnecessary electrical equipment.
- LEAVE LIGHTS ON!!

**IF THE FIRE IS NOT IN YOUR AREA, BE ALERT AND AWAIT INSTRUCTIONS.**

# OVMC Fire Manual

## TYPES OF FIRES

There are four classes of fires:

- **Class A** – fires involving ordinary combustibles (wood, paper, cloth, etc.).
- **Class B** – fires involving flammable liquids (oil, gasoline, and grease).
- **Class C** – fires involving electrical equipment and appliances.
- **Class D** – fires involving combustible metals.
- **Class K** – fires involving hot grease, cooking oil, and fat.



## TYPES OF FIRE EXTINGUISHERS

Extinguishers at this facility are classified as A, B/C, ABC, and K (kitchen).

- **Class A** extinguishers include:
  1. Water tank type
  2. Hose lines (located in outlying buildings only).These extinguishers should be used on type **A** fires.

- **Class B/C** extinguishers include:
  1. CO<sub>2</sub>
  2. Dry ChemicalThese extinguishers should be used on type **B** fires and type **C** fires.

- **Class ABC** (multipurpose) extinguishers include:
  1. Dry ChemicalThis extinguisher should be used on type **A**, **B**, or **C** fires.

- **Class K** (kitchen) extinguishers include:
  1. Liquid Fire SuppressantThese extinguishers should be used on type **K** fires.



# Meeting Place



Day Shift = Information Desk

Evening and Graveyard Shift = IT  
Hall Way

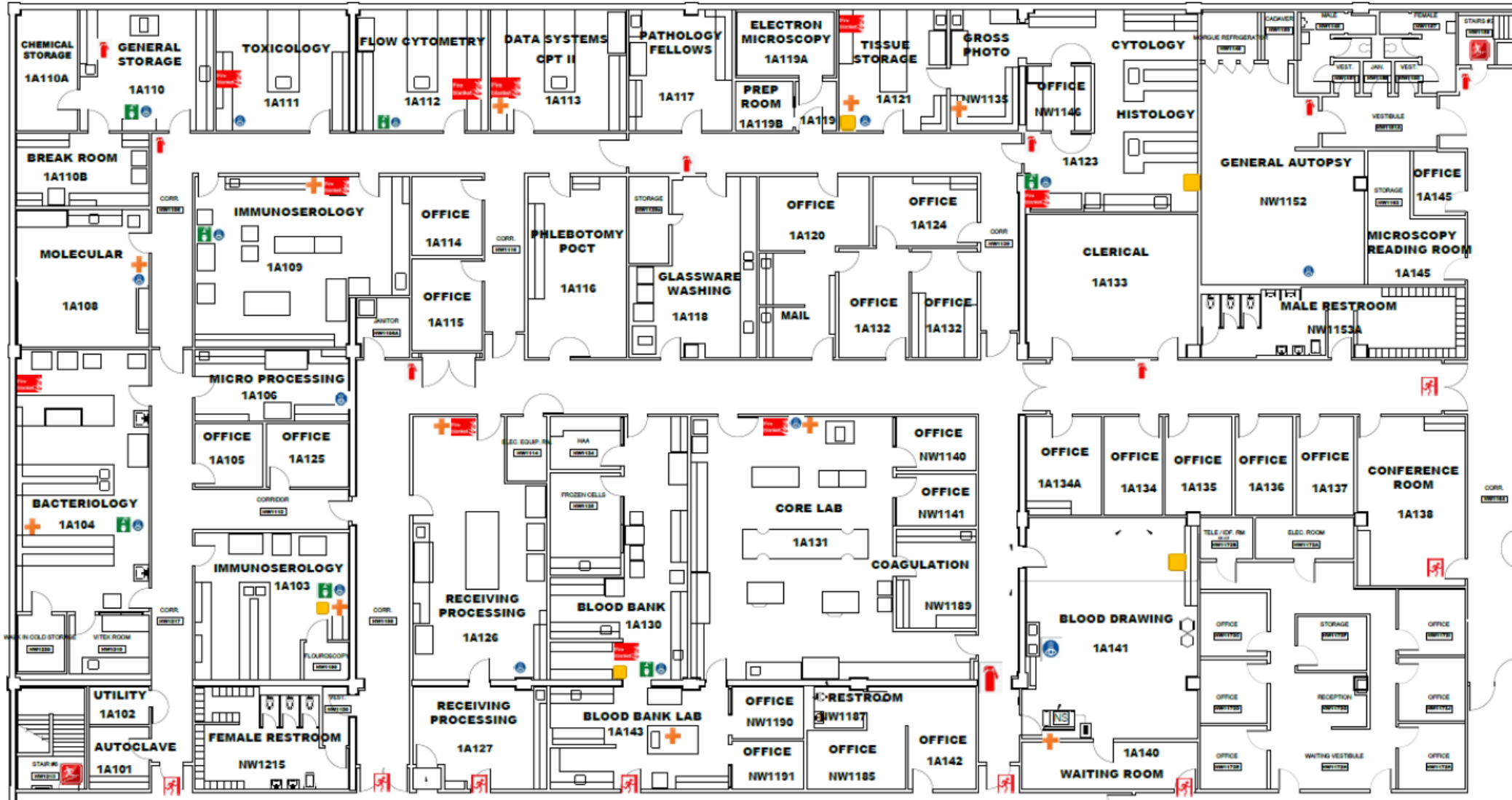
## Actual Fire









All Shift = Parking lot A and B



# DEPARTMENT OF PATHOLOGY – Fire Extinguishers, Exit Doors, Stairs, Eyewash, and Spill Kit



-  STAIRS
-  FIRE EXTINGUISHER
-  SHOWER/EYEWASH
-  FIRST AID
-  EXIT DOOR
-  SPILL KIT

Non-Medical Emergency Dial 111

Code Red Dial

Code Blue 114