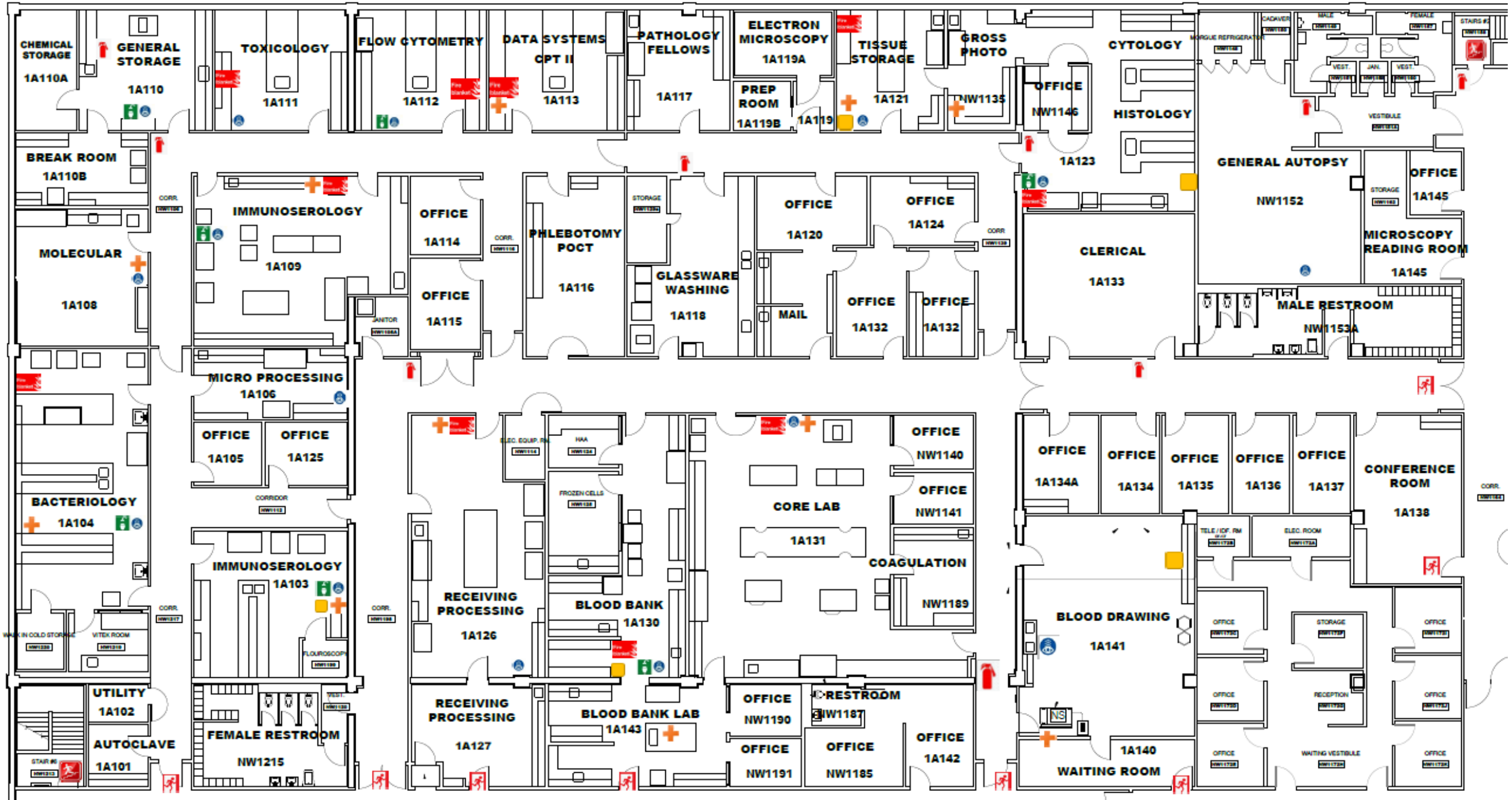


# DEPARTMENT OF PATHOLOGY – Fire Extinguishers, Exit Doors, Stairs, Eyewash, and Spill Kit



	STAIRS		FIRE EXTINGUISHER		SHOWER/EYEWASH		FIRSTAID		EXIT DOOR		SPILL KIT
Non-Medical Emergency Dial 111			Code Red Dial			Code Blue 114					

# Remember the **PASS** Word

**P**ull

**Pull** the pin (or other motion) to unlock the extinguisher.



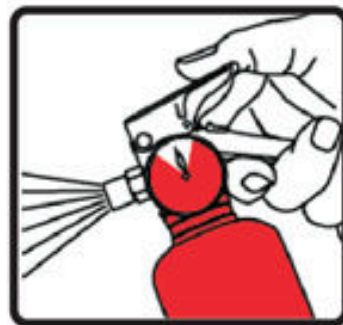
**A**im

**Aim** at the base (bottom) of the fire and stand 6 - 10 feet away.



**S**queeze

**Squeeze** the lever to discharge the agent.



**S**weep

**Sweep** the spray from left to right until the flames are totally extinguished.

