

Wet Prep

Squameous Epithelial Cells

Clue Cells

White Blood Cells

Trichomonas

Yeast

Red Blood Cells

Sperm

Artifacts

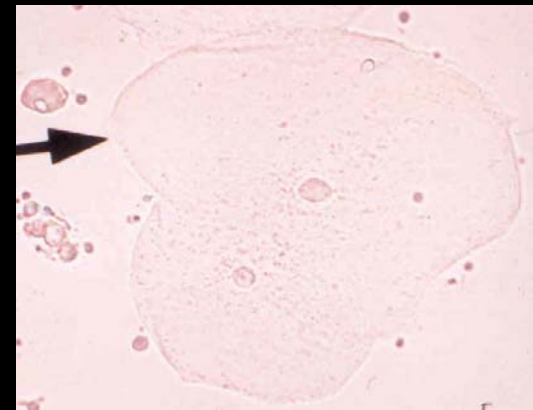
Images used with permission from The College of American Pathologists and the Michigan Department of Community Health (see Additional Resources for Web Link).

Microscopic Examination of Vaginal Discharge

- Normal Saline suspension used to view:
 - Trichomonas
 - Clue Cells
 - WBC
 - Sperm
 - Yeast
- KOH suspension (dissolves biologic materials except for cellulose found in cell walls) useful for visualizing yeast.

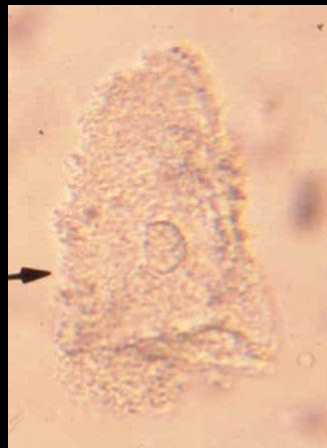
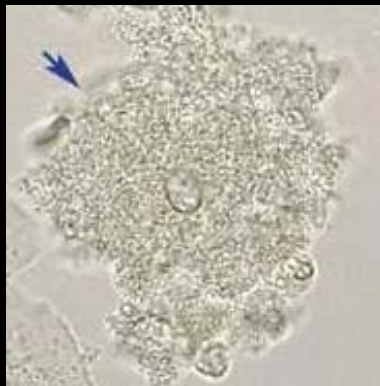
Squameous Epithelial Cell

- Large, flat cell with a single, small nucleus.
- Distinct cytoplasmic borders



Clue Cell

- Squameous epithelial cell with adherent bacteria extending beyond the cytoplasmic borders giving a shaggy or bearded appearance.
- Lacy, granular appearance
- Indistinct borders



Side-by-Side Squameous Epithelial Cell vs Clue Cell

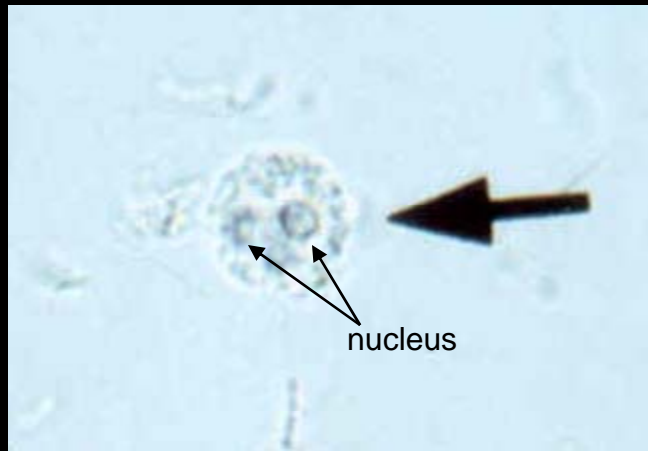


Squameous epithelial cell
Note distinct borders



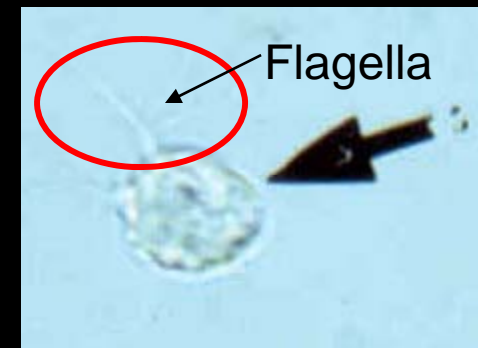
Clue cell
Note indistinct, shaggy borders

Side-by-Side White Blood Cell vs Trichomonas



White Blood Cell

- Small, round, multilobed nucleus present.



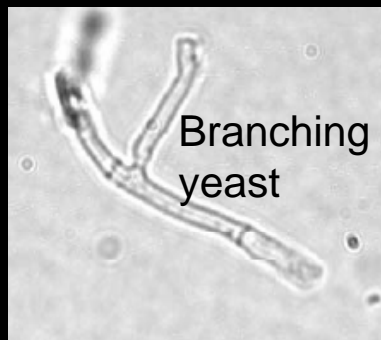
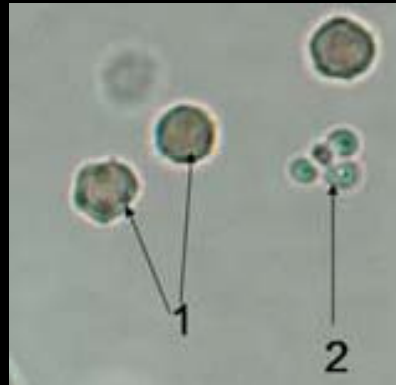
Trichomonas

- Flagella present
- Pear-shaped organism
- Look for “falling leaf” movement under the microscope

Side-by-Side Yeast vs Red Blood Cell

1. Red Blood Cell

- Small round cells, may be crenated in older samples.
- May have a dimple in the middle.
- Smaller than white cells, but larger and more uniform than yeast.



2. Yeast

- Oblong cells, may be budding.
- May form pseudohyphae (elongated budding yeast cells that have not detached from each other).
- May exhibit branching.



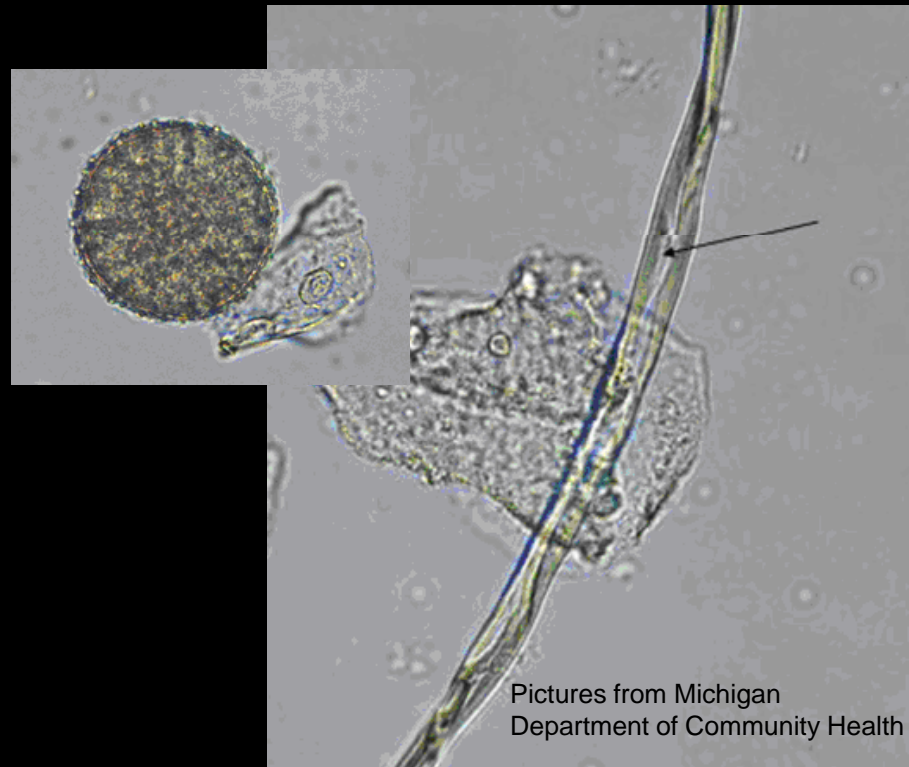
Sperm

- Small oval head with a long, slender tail.
- Head 4-6 μm long, tail 40-60 μm long.

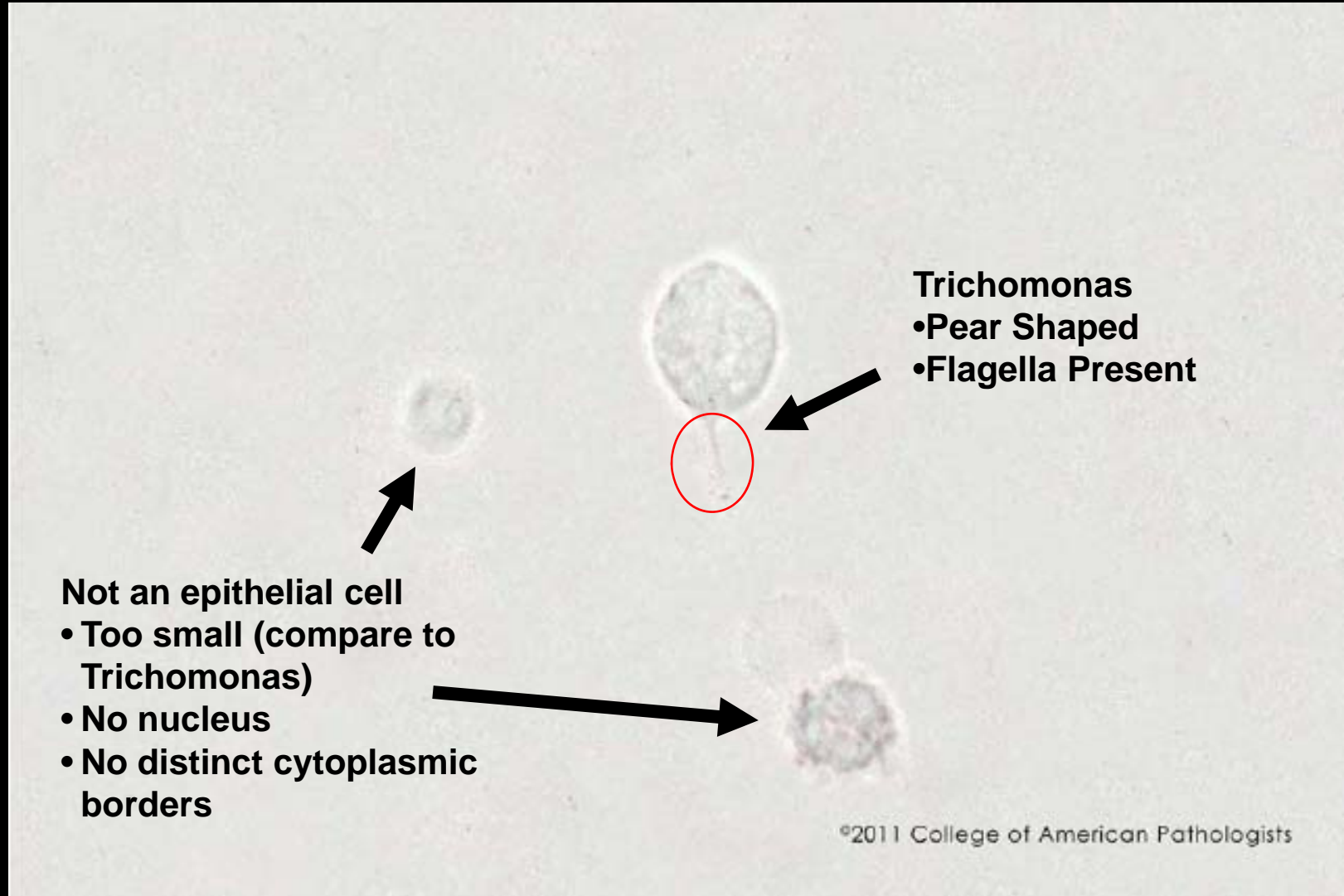


Artifact

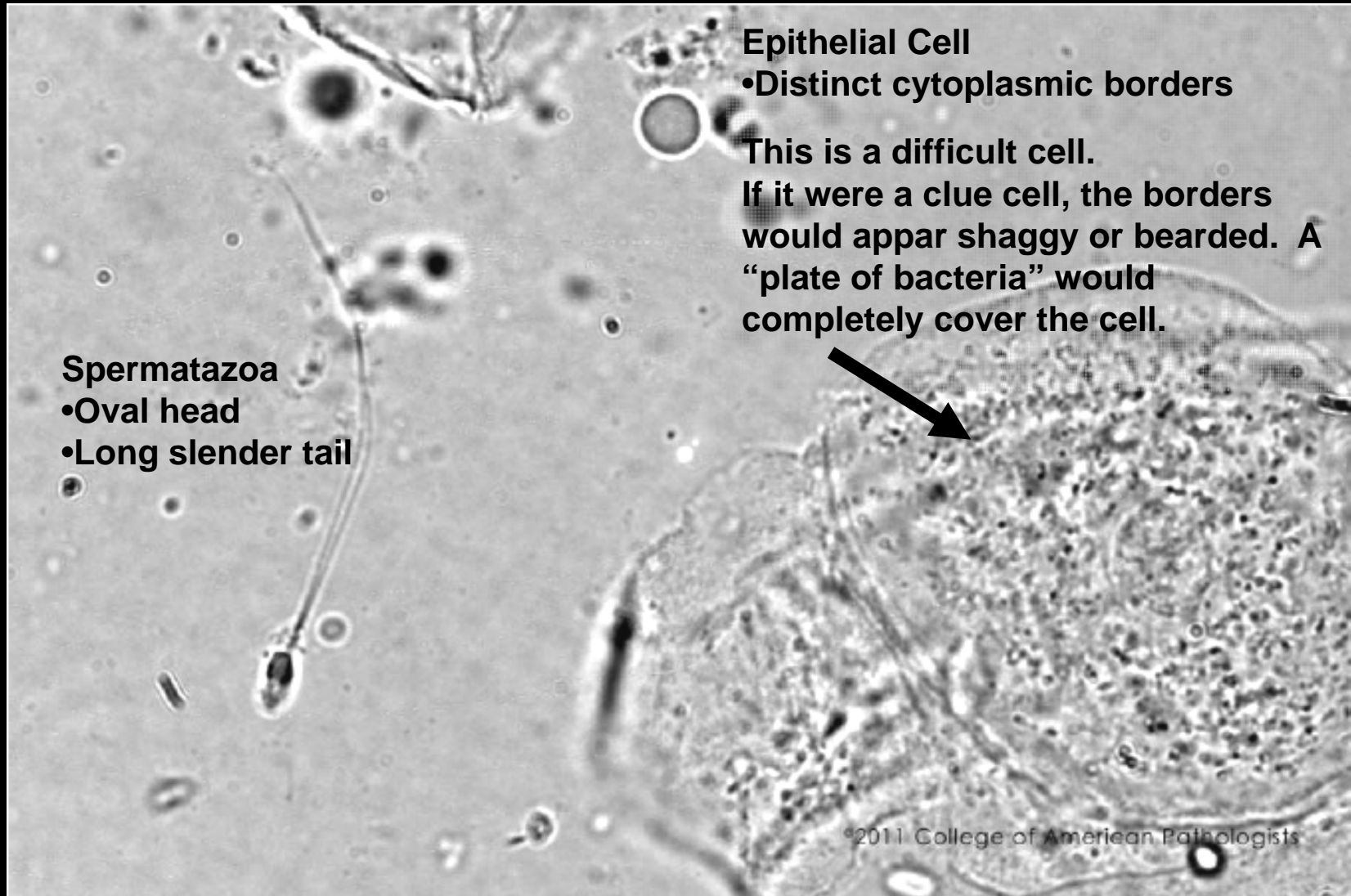
- Highly refractile.
- Very smooth edges – looks too perfect to be natural.



Survey Slide 1



Survey Slide 2



Survey Slide 3



Additional Resources

Copy and paste link into your web browser.

<http://www.womenshealthapta.org/secure/ob101/My%20Documents4/Procedures/Wet%20Mount/Wet%20Mount.htm>

<http://emprocedures.com/obgyn/wetprep/analysis.htm>

http://www.michigan.gov/mdch/0,1607,7-132-2945_5103_7168-74548--,00.html

**For questions, contact:
Lynette Hall
Point of Care Office
TriCore Reference Laboratories
505-841-1361**

