



Topic: New Documentation Available in I/O / I-Flowsheet Apheresis System Setup and Pre-Procedure Sections

Facility: Ambulatory, Inpatient, Emergency Departments, and NICU/PEDS




Audience: Providers, Respiratory, Nursing, and Clinical Support Staff

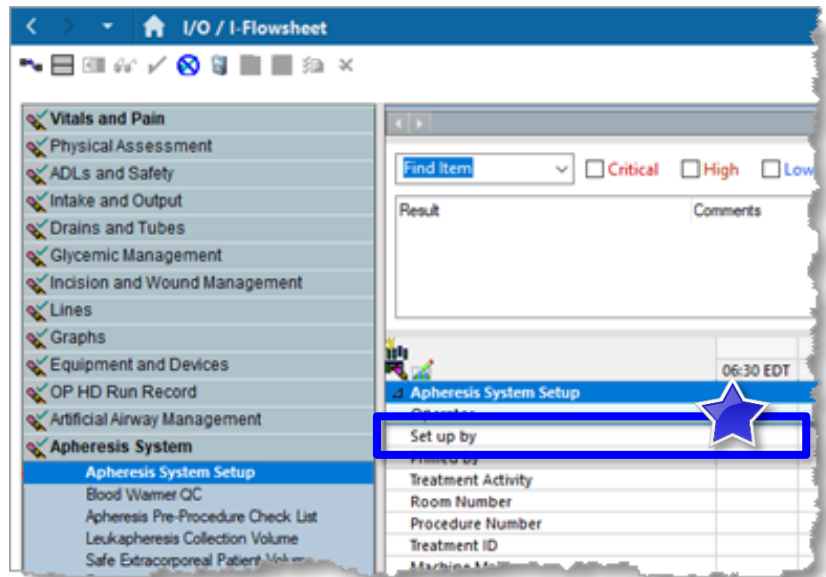
What: Users can now document "Set up by," "Verified Apheresis Machine and Lines Primed" & "Machine Ready for Patient Connection" in the I/O / I-Flowsheet Apheresis System Set Up and Pre-Procedure sections.

Why: This process can involve multiple nurses, so it's important to document the setup separately from priming as well as to document validation of lines being primed and machine being ready prior to the procedure.

New Documentation Entry Points Added

Users can now document the following in the I/O / I-Flowsheet Apheresis System Set Up and Pre-Procedure sections:

-  **Set up by**
-  **Verified Apheresis Machine and Lines Primed**
-  **Machine Ready for Patient Connection**



Important

- The apheresis machines and the Cellex extracorporeal photopheresis machines are set up and primed before use by the nurses.
- Since this process sometimes involves one or two nurses, it is important to
 - ♦ Document the set up separately from priming, as well as
 - ♦ Document validation of the lines being primed, and
 - ♦ Document machine being ready prior to the procedure.

