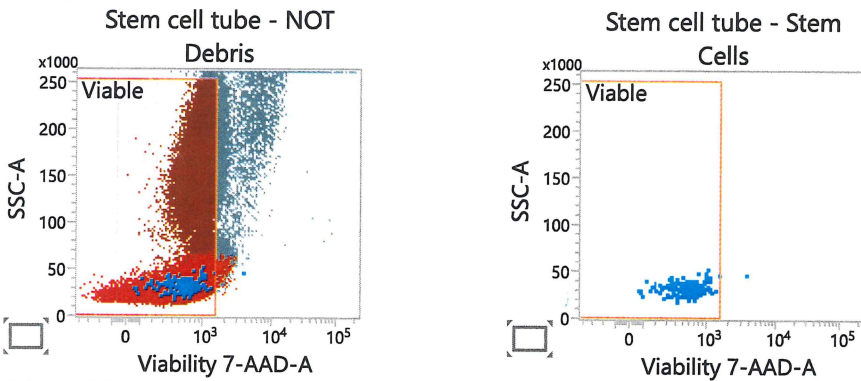
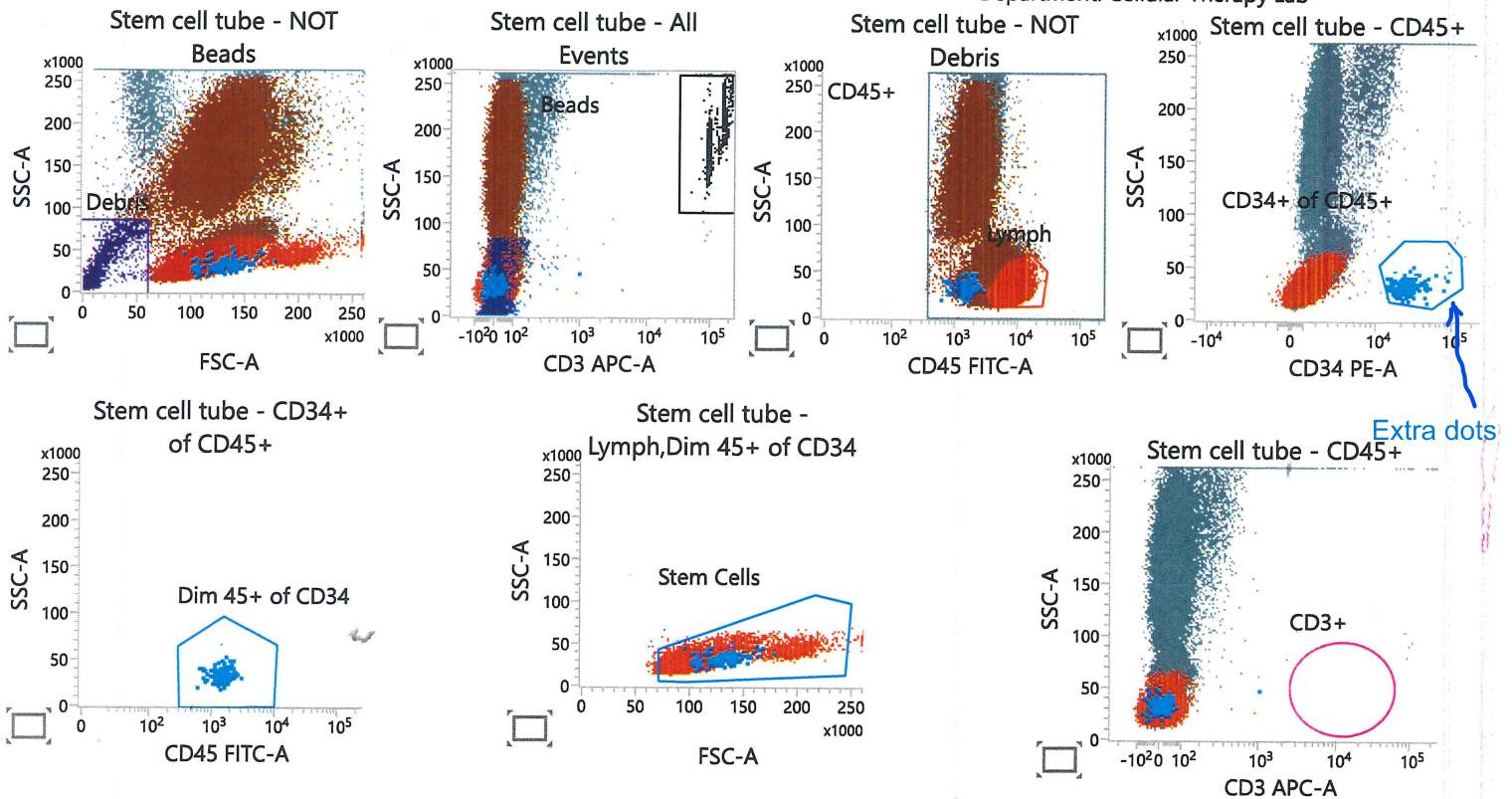


Sample ID: FL4-04 BT 10-17

Assay:  
Stem Cell with CD3 v10.22 F UD

Approved:  
10/17/2023 2:36:30 PM  
Institution: IU Health  
Department: Cellular Therapy Lab



**Inspect all dot plots**  
**Viable Stem cells+ of CD45= 0.17 %**  
**Stem Cell Viability= 99.4 %**  
**Viable CD3= 0.0 %**

Absolute Viable CD45+= 3,835.13 cells/ul

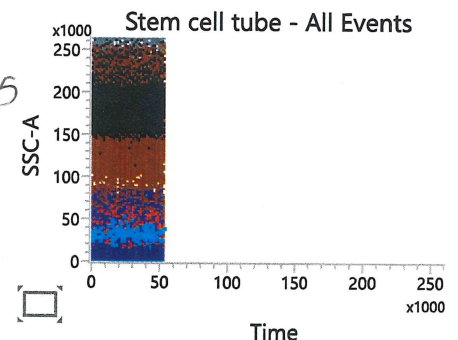
Absolute viable Stem cells= 6.60 cells/ul

**FL4-04 BT 10-17:Stem cell tube RunPointerStatistics**

Acquisition Date (Stem cell tube): 10/17/2023  
 Time at Beginning of Acquisition (Stem cell tube): 2:26:43 PM  
 Dilution Factor (Stem cell tube): 1

Name	Events	% Total	% Parent
Beads	11,225	8.89	8.89
Debris	15,075	11.94	13.10
NOT Debris	100,005	79.18	86.90
CD45+	100,000	79.17	100.00
Lymph	35,070	27.77	35.07
CD34+ of CD45+	156	0.12	0.16
Dim 45+ of CD34	156	0.12	100.00
Stem Cells	154	0.12	98.72
Stem Cells AND Viable	153	0.12	0.15
CD3+ AND Viable	0	0.00	0.00
CD45+ AND Viable	88,945	70.42	88.94

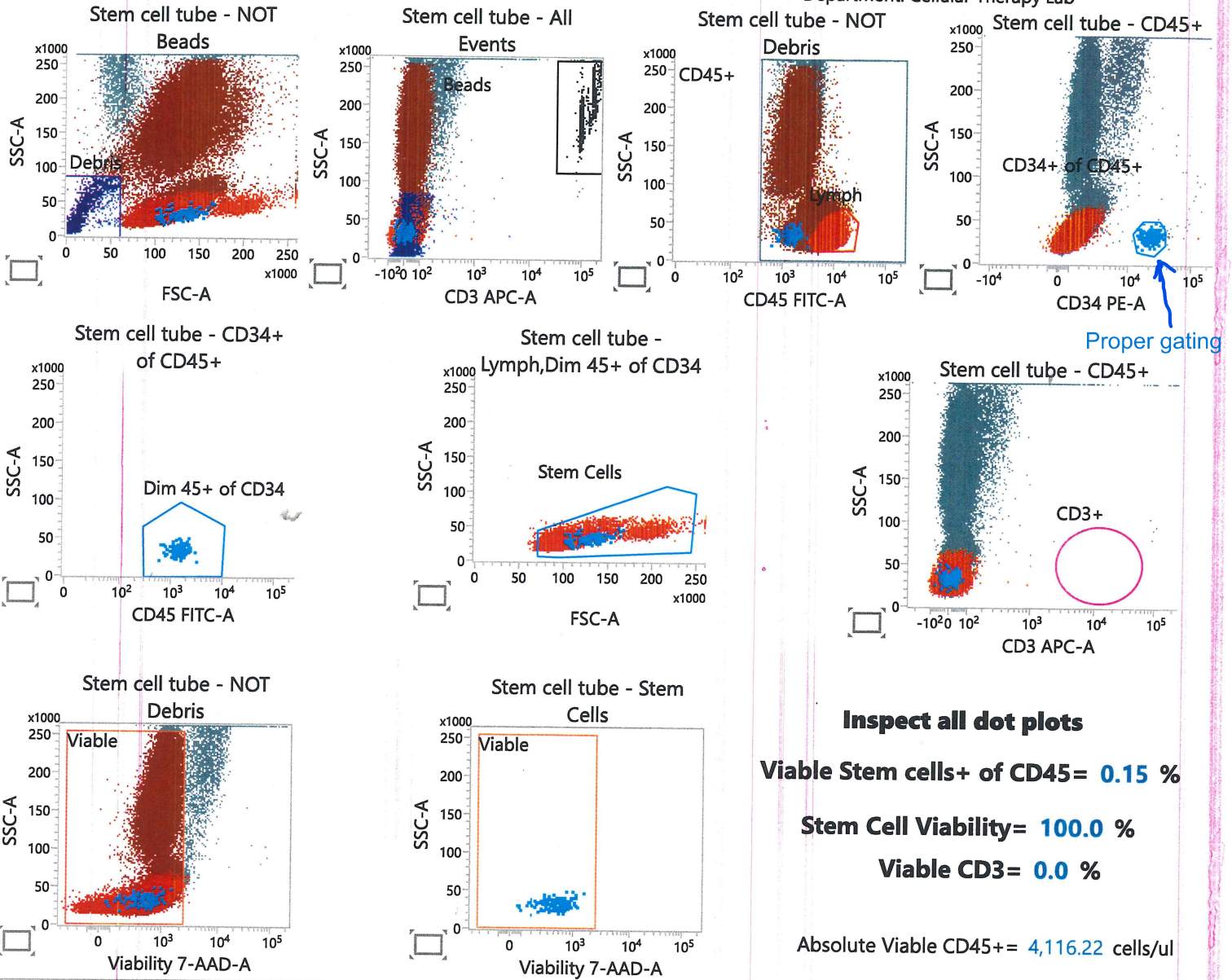
*CD45+ = 99995  
 Not Debris  
 ≈ 100,000*



Sample ID: FL4-04 BT 10-17

Assay:  
Stem Cell with CD3 v10.22 F UD

Approved:  
12/13/2023 11:30:44 AM  
Institution: IU Health  
Department: Cellular Therapy Lab



**Inspect all dot plots**

**Viable Stem cells+ of CD45= 0.15 %**

**Stem Cell Viability= 100.0 %**

**Viable CD3= 0.0 %**

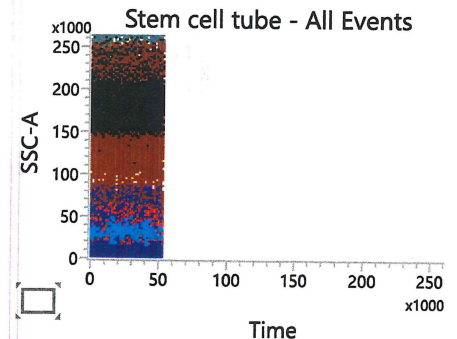
Absolute Viable CD45+= 4,116.22 cells/ul

Absolute viable Stem cells= 6.04 cells/ul

**FL4-04 BT 10-17:Stem cell tube RunPointerStatistics**

Acquisition Date (Stem cell tube): 10/17/2023  
 Time at Beginning of Acquisition (Stem cell tube): 2:26:43 PM  
 Dilution Factor (Stem cell tube): 1

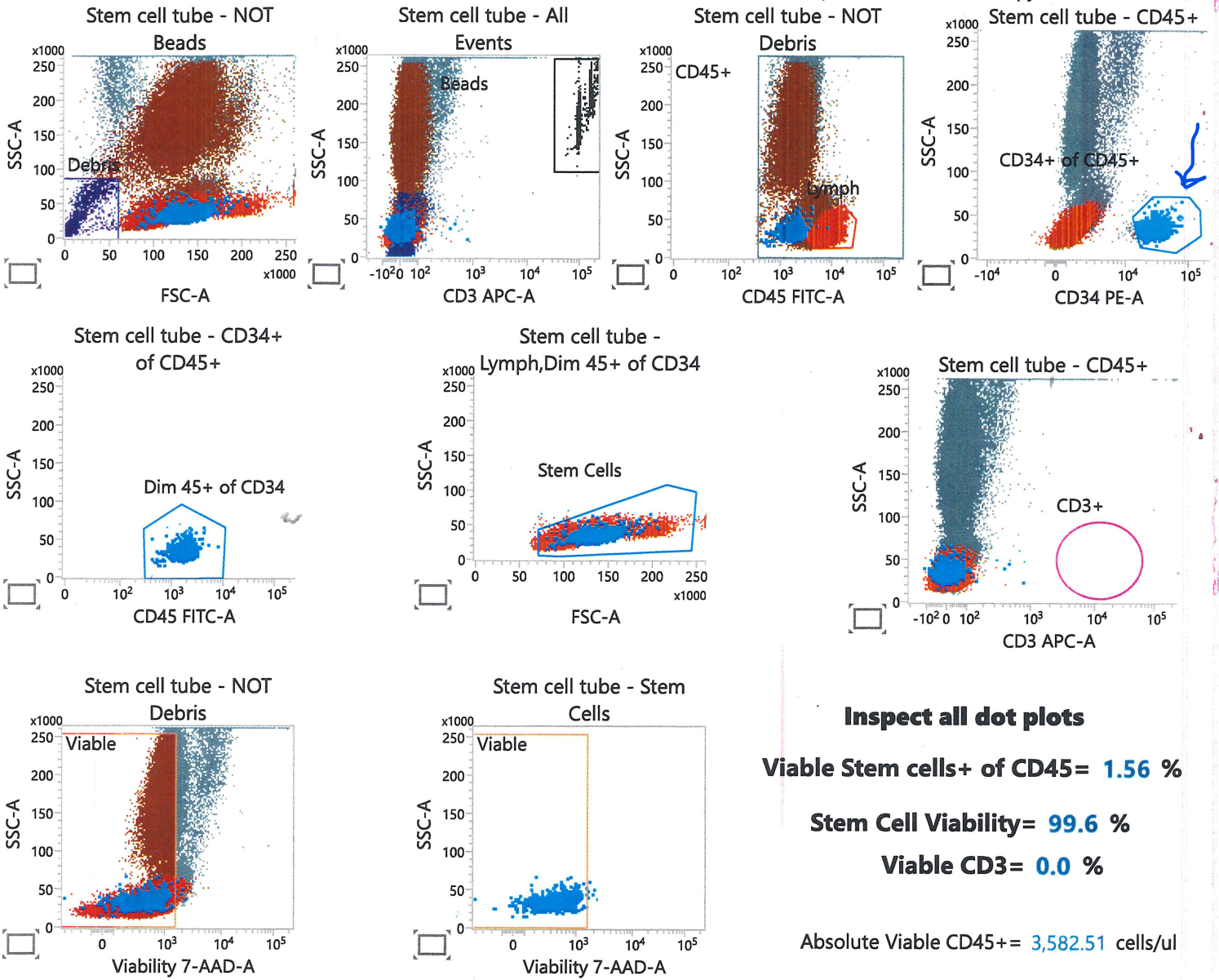
Name	Events	% Total	% Parent
Beads	11,225	8.89	8.89
Debris	15,075	11.94	13.10
NOT Debris	100,005	79.18	86.90
CD45+	100,000	79.17	100.00
Lymph	35,070	27.77	35.07
CD34+ of CD45+	140	0.11	0.14
Dim 45+ of CD34	140	0.11	100.00
Stem Cells	140	0.11	100.00
Stem Cells AND Viable	140	0.11	0.14
CD3+ AND Viable	0	0.00	0.00
CD45+ AND Viable	95,464	75.58	95.46



Sample ID: FL4-03 BT 10-17

Assay:  
Stem Cell with CD3 v10.22 F UD

Approved:  
10/17/2023 2:24:50 PM  
Institution: IU Health  
Department: Cellular Therapy Lab



**Inspect all dot plots**

**Viable Stem cells+ of CD45= 1.56 %**

**Stem Cell Viability= 99.6 %**

**Viable CD3= 0.0 %**

Absolute Viable CD45+= 3,582.51 cells/ul

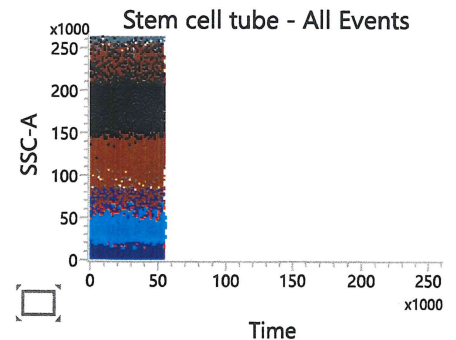
Absolute viable Stem cells= 56.06 cells/ul

**FL4-03 BT 10-17:Stem cell tube RunPointerStatistics**

Acquisition Date (Stem cell tube): 10/17/2023  
 Time at Beginning of Acquisition (Stem cell tube): 2:13:40 PM  
 Dilution Factor (Stem cell tube): 1

Name	Events	% Total	% Parent
Beads	11,690	9.19	9.19
Debris	15,445	12.15	13.38
NOT Debris	100,013	78.66	86.62
CD45+	100,000	78.65	99.99
Lymph	34,879	27.43	34.88
CD34+ of CD45+	1,370	1.08	1.37
Dim 45+ of CD34	1,370	1.08	100.00
Stem Cells	1,360	1.07	99.27
Stem Cells AND Viable	1,354	1.06	1.35
CD3+ AND Viable	0	0.00	0.00
CD45+ AND Viable	86,528	68.05	86.52

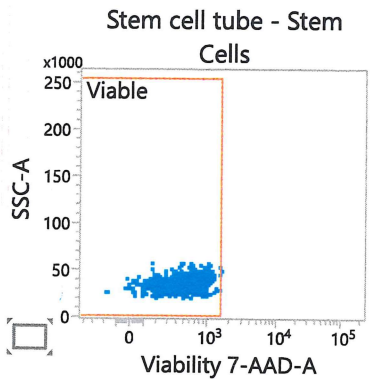
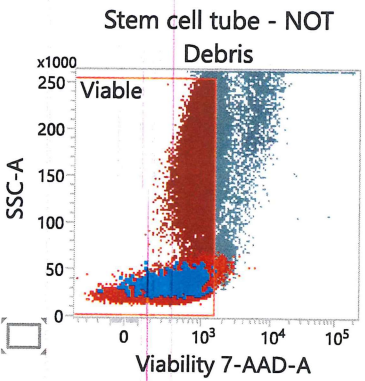
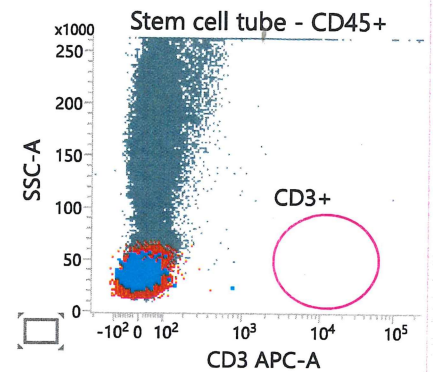
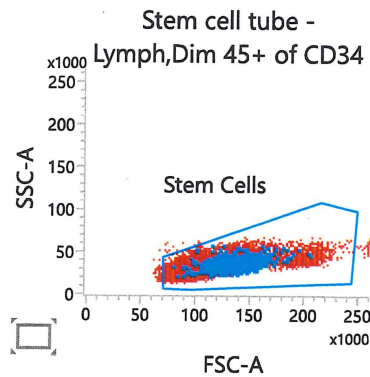
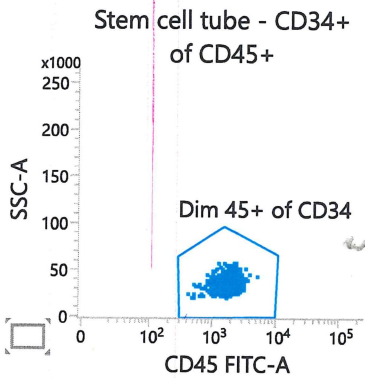
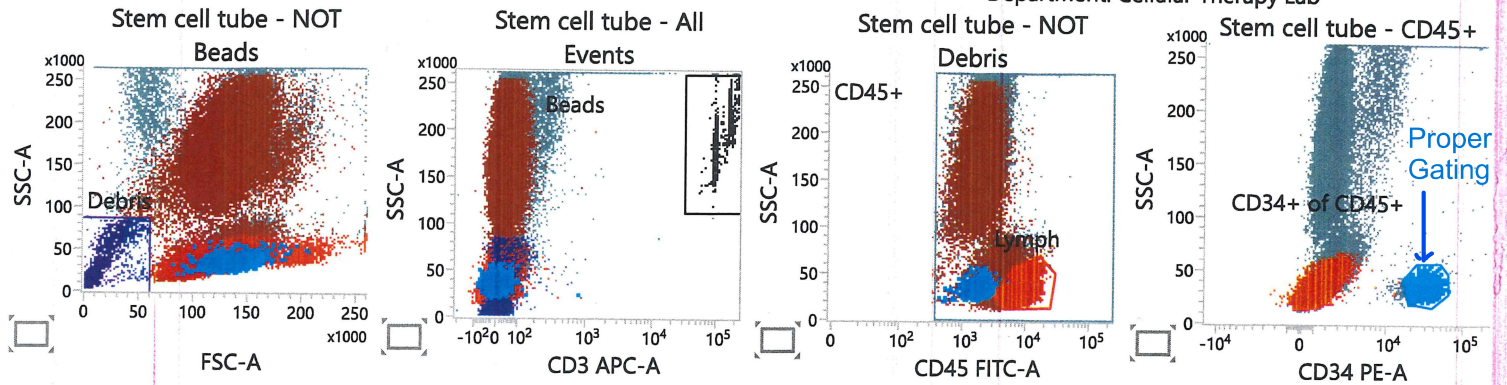
CD45+  
not debris = 0.99987  
= 100.00



Sample ID: FL4-03 BT 10-17

Assay:  
Stem Cell with CD3 v10.22 F UD

Approved:  
12/8/2023 10:22:05 AM  
Institution: IU Health  
Department: Cellular Therapy Lab



**Inspect all dot plots**

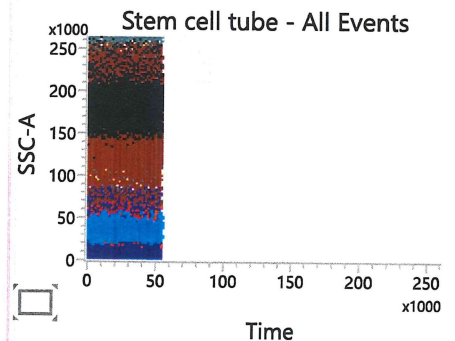
**Viable Stem cells+ of CD45= 1.48 %**

**Stem Cell Viability= 99.9 %**

**Viable CD3= 0.0 %**

Absolute Viable CD45+= 3,582.51 cells/ul

Absolute viable Stem cells= 53.12 cells/ul



**FL4-03 BT 10-17:Stem cell tube RunPointerStatistics**

Acquisition Date (Stem cell tube): 10/17/2023  
 Time at Beginning of Acquisition (Stem cell tube): 2:13:40 PM  
 Dilution Factor (Stem cell tube): 1

Name	Events	% Total	% Parent
Beads	11,690	9.19	9.19
Debris	15,445	12.15	13.38
NOT Debris	100,013	78.66	86.62
CD45+	100,000	78.65	99.99
Lymph	34,879	27.43	34.88
CD34+ of CD45+	1,286	1.01	1.29
Dim 45+ of CD34	1,286	1.01	100.00
Stem Cells	1,284	1.01	99.84
Stem Cells AND Viable	1,283	1.01	1.28
CD3+ AND Viable	0	0.00	0.00
CD45+ AND Viable	86,528	68.05	86.52