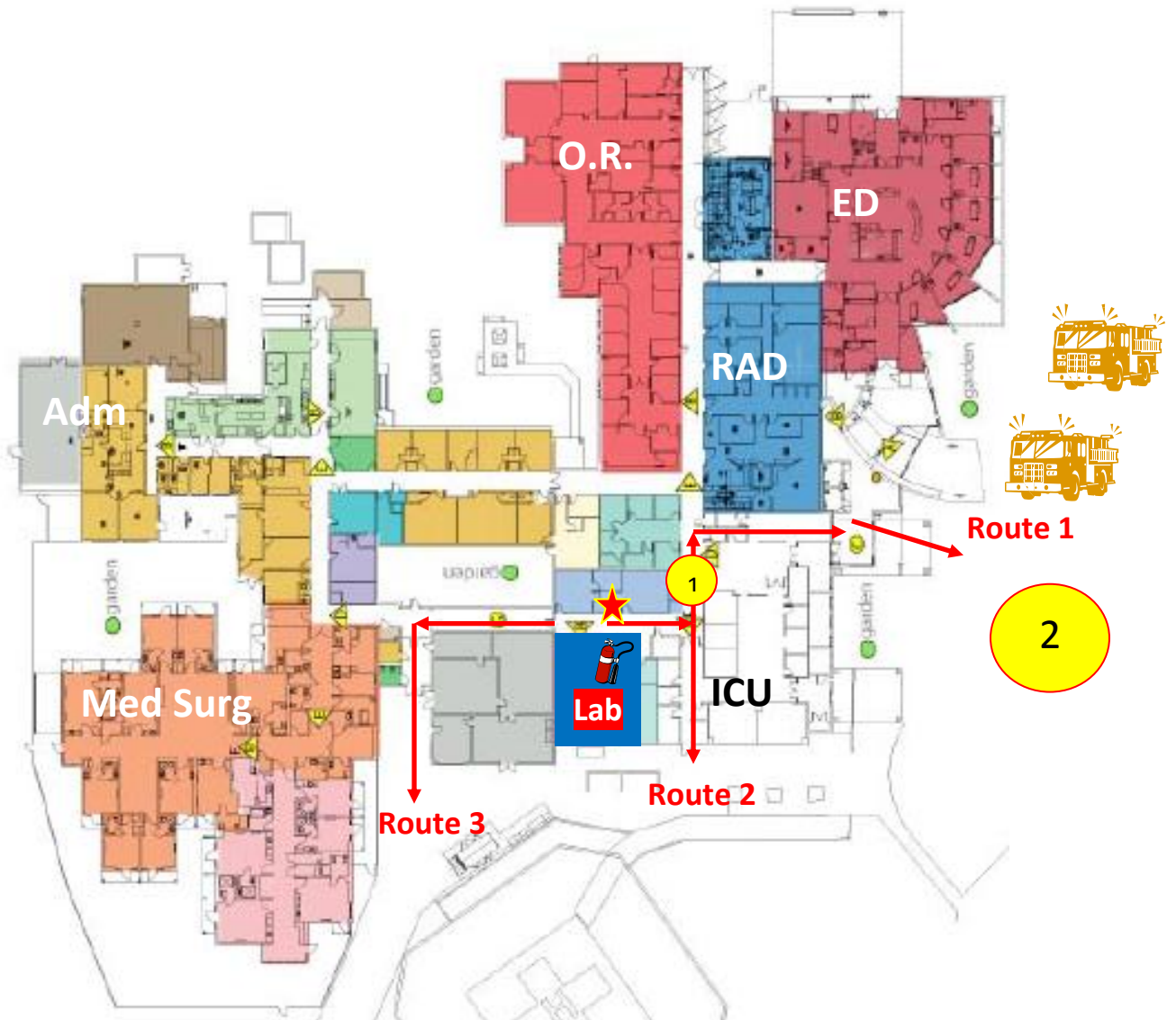




Evacuation Plan



1 = Meet During a Fire Alarm

 = Fire Extinguisher (IN LAB!)

2 = Meet when actual Fire occurs in our area.

 = Location of PULL-BOX

Procedure:

- 1). Ensure all employees are exiting
- 2). Assist the disabled: Push in wheelchair, assist-walk or carry them to evacuate (Know the procedure)
- 3). Go directly to the designated evacuation point
- 4). Take a head-count at the evacuation-point
- 5). Direct emergency personnel to those who did not evacuate