

i-STAT® **TECHNICAL BULLETIN**

i-STAT CHEM8+ CARTRIDGE REDESIGN

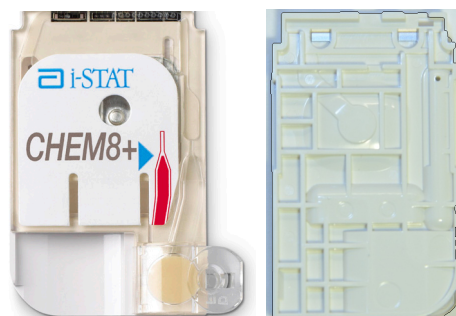
OVERVIEW

Shortly, Abbott Point of Care will begin shipping redesigned i-STAT CHEM8+ cartridges. Although CHEM8+ is the first redesigned cartridge to become available, the complete menu of i-STAT cartridges is scheduled for conversion to the new design.

GENERAL AND PACKAGING CONSIDERATIONS

The newly designed i-STAT CHEM8+ cartridge **contains the same components** as the original CHEM8+ cartridge. It retains the **same intended use** and instructions for use as the original design. Its **performance characteristics are consistent** with the original CHEM8+ cartridge.

- The Abbott List Number for the CHEM8+ cartridge will change to 09P31-25.
- Storage and disposal instructions remain unchanged for the new CHEM8+ cartridge.
- Each box will continue to contain 25 cartridges. However, the new box is smaller, helping to decrease storage space requirements.
- The cartridge will remain sealed in a foil pouch. The pouch will contain the same information as the original pouch.
- **The new CHEM8+ cartridge is not made with natural rubber latex.**



FRONT

BACK

**ORIGINAL CHEM8+
CARTRIDGE**



FRONT

BACK

**NEW CHEM8+
CARTRIDGE**

FEATURES OF THE NEW DESIGN

The new CHEM8+ cartridge features enhancements that foster **ease of use**:

HIGH-CONTRAST SAMPLE WELL

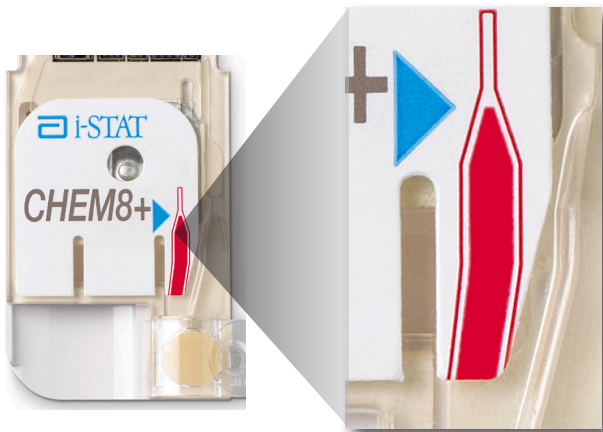


ORIGINAL SAMPLE WELL

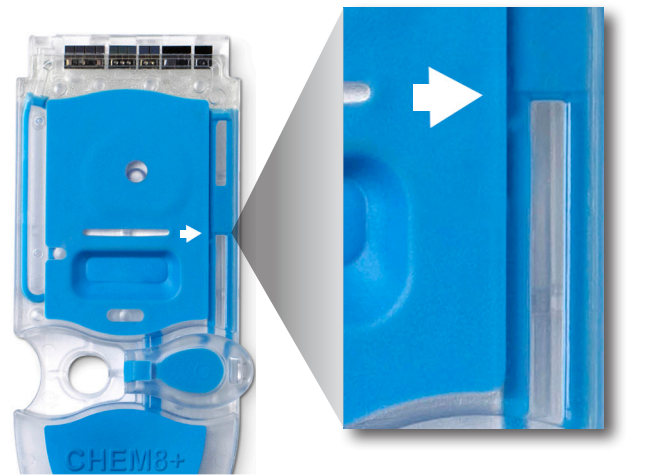


NEW SAMPLE WELL

RELOCATED FILL MARK INDICATOR



**OLD LOCATION OF
FILL INDICATOR**



**NEW LOCATION OF
FILL INDICATOR**

UPDATED LATCH DESIGN



ORIGINAL LATCH DESIGN



NEW LATCH DESIGN

NEW CARTRIDGE THUMBWELL



NEW THUMBWELL, VISIBLE OUTSIDE OF THE HANDHELD

QUESTIONS?



If you have any questions regarding the information in this Technical Bulletin, contact Abbott Point of Care Technical Services:

- By e-mail at techsvc@apoc.abbott.com
- By phone: Non-waived customers: 800-366-8020, Option 1
Waived customers: 800-284-0702, Option 1.