

Simple Spot Check

Valid Specimen

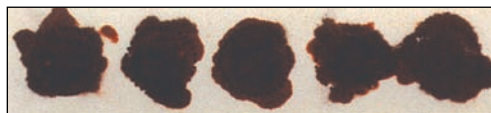


Allow a sufficient quantity of blood to soak through to completely fill the pre-printed circle on the filter paper. Fill all required circles with blood. Do not layer successive drops of blood or apply blood more than once in the same collection circle. Avoid touching or smearing spots.

Invalid Specimens:



1. Specimen quantity insufficient for testing



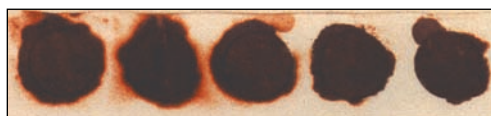
2. Specimen appears scratched or abraded.



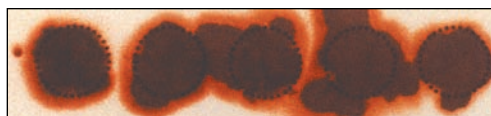
3. Specimen not dry before mailing.



4. Specimen appears supersaturated.



5. Specimen appears diluted, discolored or contaminated.



6. Specimen exhibits serum rings.



7. Specimen appears clotted or layered.



8. No blood.

Possible Causes:

- Removing filter paper before blood has completely filled circle or before blood has soaked through to second side.
- Applying blood to filter paper with a capillary tube.
- Touching filter paper before or after blood specimen collection with gloved or ungloved hands, hand lotion, etc.
- Allowing filter paper to come in contact with gloved or ungloved hands or substances such as hand lotion or powder, either before or after blood specimen collection.
- Applying blood with a capillary tube or other device.
- Mailing specimen before drying for a minimum of four hours.
- Applying excess blood to filter paper, usually with a device.
- Applying blood to both sides of filter paper.
- Squeezing or “milking” of area surrounding the puncture site.
- Allowing filter paper to come in contact with gloved or ungloved hands or substances such as alcohol, formula, antiseptic solutions, water, hand lotion or powder, etc., either before or after blood specimen collection.
- Exposing blood spots to direct heat.
- Not wiping alcohol from puncture site before making skin puncture.
- Allowing filter paper to come in contact with alcohol, hand lotion, etc.
- Squeezing area surrounding puncture site excessively.
- Drying specimen improperly.
- Applying blood to filter paper with a capillary tube.
- Touching the same circle on filter paper to blood drop several times.
- Filling circle on both sides of filter paper.
- Failure to obtain blood specimen.

Information provided by The New York State Department of Health.